



2012 MACK CHU613 T/A TRUCK TRACTOR W/ MP8, COUNTY UNIT

WHAT

An auction of heavy construction equipment from companies, local contractors & Government Entities

WHEN

Wednesday, November 9th @ 9:00am
Inspection: November 7th & 8th
from 8:15am - 4:45pm

WHERE

7500 York Street, Denver, CO 80229

INTERNET AUCTION



HEAVY CONSTRUCTION & CONTRACTING EQUIPMENT

WEDNESDAY • November 9th • 9:00 A.M.

Inspection: November 7th & 8th from 8:15 a.m. to 4:45 p.m.



2008 MANAC SBD-240 T/A BELLY DUMP TRAILER, COUNTY UNIT



1996 INTERNATIONAL 3800 MOBILE OFFICE, COUNTY UNIT

SELLING FOR

Larimer County
Weld County
Jefferson County
City of Aurora
City of Lakewood
Town of Gypsum
Denver Water Department
Park County

AUCTION INCLUDING:
Motor Graders, Wheel Loaders,
Loader/Backhoes,
Hydraulic Excavators, Skid
Steer Loaders, Compaction
Equipment, Truck Tractors,
Street Sweeper, Dump Trucks,
Lowboy Trailers, Utility Trucks,
Flatbed Trucks, Side Dumps,
Bucket Trucks, Farm Tractors,
Equipment Trailers, Pumps,
Storage Containers, Message
Boards, Fire Truck, Generators,
[300] New Attachments,
Much More!

Heavy Construction & Contracting Equipment



**2006 JOHN DEERE 310G 4WD
LOADER/ BACKHOE, EXTENDAHOE**

7500 York Street • Denver, Colorado 80229
WEDNESDAY • November 9th • 9:00 A.M.
Inspection: November 7th & 8th 8:15 a.m. to 4:45 p.m.

Internet Only Auction • Bidding Available at:
www.RollerAuction.com/construction



**1998 JOHN DEERE 772CH 6WD MOTOR
GRADER, CITY UNIT**

• Motor Graders	• Wheel Loaders	• Compaction Equipment	• Hydraulic Excavators	• Street Sweeper	• Equipment Trailers
• Loader/Backhoes	• Skid Steer Loaders	• Truck Tractors	• Pickup Trucks	• Dump Trucks	• New Attachments



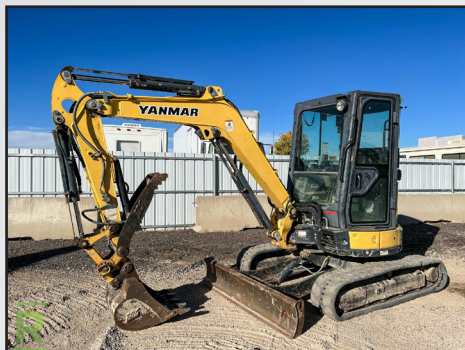
1998 JOHN DEERE 772CH 6WD MOTOR GRADER, CITY UNIT



2018 JOHN DEERE 333G CRAWLER SKID STEER LOADER W/ 2400 HOURS



2012 CATERPILLAR 246C SKID STEER LOADER W/ 1017 HOURS



2018 YANMAR VI035 MINI EXCAVATOR



CASE 721 WHEEL LOADER

LOADER/ BACKHOE

2006 John Deere 310G 4WD Loader/Backhoe, Extendahoe, Auxiliary Hydraulics, EROPS, Heat & A/C, 24" Hoe Bucket, Hour Reads: 1981, S/N: T0310GX960016

HYDRAULIC EXCAVATORS

2004 Caterpillar 321CLCR Hydraulic Excavator, 32" TBG, 46" Bucket w/ Thumb, Auxiliary Hydraulics, Hour Reads: 9317, S/N: MCF00201

MOTOR GRADER

1998 John Deere 772CH 6WD Motor Grader, Rear Ripper, 14' Moldboard, Rybind Front Lift Group, Rybind 12" Snow Plow, City Unit, Hour Reads: 6368, S/N: DW772CH568468

SKID STEER LOADERS

2019 Caterpillar 289D Crawler Skid Steer Loader, Enclosed Cab w/ Heat & A/C, 18" Rubber Tracks, 2-Speed, Auxiliary & High Flow Hydraulics, 78" Bucket, Hour Reads: 2130, S/N: CAT0289DKTAW13507

2018 John Deere 333G Crawler Skid Steer Loader, Enclosed Cab w/ Heat & A/C, 18" Rubber Tracks, 2-Speed, Rear Counterweights, Hours: 2429, S/N: 1T0333GKCF340519

2009 Caterpillar 279C Crawler Skid Steer Loader, 2-Speed, Enclosed Cab w/ Heat and A/C, 78" Bucket, Front Quick Coupler, Hour Reads: 6740, S/N: CAT0279CCMBT00661

2012 Caterpillar 246C Skid Steer Loader, Enclosed Cab w/ Heat & A/C, 2-Speed, Hydraulic Front Coupler, Auxiliary Hydraulics With Electrical, Air Ride Seat, Self Leveling, Joystick Controls, Hour Reads: 1017, S/N: CAT0246CJJAY07523

2002 Bobcat S175 Skid Steer Loader, Enclosed Cab w/ Heat & A/C, Auxiliary & High Flow Hydraulics, 66" Bucket, County Unit, Hour Reads: 1792, S/N: 517625001

2003 Bobcat T300 Crawler Skid Steer Loader, Auxiliary Hydraulics, Turbo, 12" Rubber Tracks, 78" Bucket, Hour Reads: 6535, S/N: 521912700

2000 John Deere 250 Skid Steer Loader, Auxiliary Hydraulics, 78" Bucket, Hour Reads: 917, S/N: KVO250A252252

Caterpillar 252B Skid Steer Loader, 2-Speed, Auxiliary Hydraulics, Solid Tires, S/N: CAT0252BHSCP03582

WHEEL LOADER

Case 721 Wheel Loader 20.5-R25 Tires, S/N: JAK0022690

DIRECTIONAL BORING MACHINE

2007 Ditch Witch JT2020 Mach 1 Directional Boring Machine, Cummins Diesel, 10" Rubber Tracks, With Boring Rod, Unit has Approximately 2700 Hours, S/N: CMWJ2020C70000562

MINI EXCAVATORS

2018 Yanmar Vi035 Mini Excavator, Enclosed Cab, 3121 Hours

(4) 2022 New Agrotk H12 Mini Excavators, Gas Engine, 7" Rubber Tracks, 36" Backfill Blade, 16" Bucket w/ Thumb, Hour Reads: 0

COMPACTION EQUIPMENT

2016 Rammax 1575 Trench Roller, Yanmar Diesel 33" Double Drums, W/ Remote, 397 Hours, S/N: 5570127

(4) Bomag BW55E Walk-Behind Asphalt Rollers, Honda Gas Engine, 22" Drum, County Units



2004 CATERPILLAR 321CLCR HYDRAULIC EXCAVATOR



2019 CATERPILLAR 289D CRAWLER SKID STEER LOADER



2002 BOBCAT S175 SKID STEER LOADER, COUNTY UNIT



2007 DITCH WITCH JT2020 MACH 1 DIRECTIONAL BORING MACHINE



NEW 2022 AGROTK H12 MINI EXCAVATORS



2018 JOHN DEERE 5115M 4WD AGRICULTURAL TRACTOR W/ 232 HOURS



2006 ELGIN EAGLE STREET SWEEPER



2007 INTERNATIONAL 7400 T/A DUMP TRUCK, CITY UNIT



2001 FREIGHTLINER FL80 FUEL & LUBE TRUCK W/ CRANE, COUNTY UNIT



2014 INTERNATIONAL PROSTAR T/A TRUCK TRACTOR

TRACTOR/ LOADERS

2018 John Deere 5115M 4WD Agricultural Tractor, Enclosed Cab w/ Heat & A/C, PTO, 3-Pt., Rear Auxiliary Hydraulics, Hours: 232, S/N: 1LV5115MPHJ401713

Kubota L3830 4WD Tractor / Loader, PTO, 3-PT, HST, 72" Snow Plow Blade With Undermount, Hour Reads: 3186, S/N: 31985

STREET SWEEPER

2006 Elgin Eagle Street Sweeper, Mounted On Sterling SC8000 Chassis, Cummins Front Diesel, John Deere Rear Diesel, Dual Gutter Brooms, Dual Steer, S/N: F1075D, Front Engine Hours: 13,845, Rear Engine Hours: 11,268

DUMP TRUCKS

2007 International 7400 T/A Dump Truck, DT570, Automatic, Hendrickson Rubber Pad Suspension, 15' Dump Box w/ Electric Tarp, Monroe 10' Snow Plow, City Unit

2005 International 7400 T/A Dump Truck, DT570, Automatic, Hendrickson Rubber Pad Suspension, 15' Dump Box w/ Electric Tarp, Monroe 10' Snow Plow, City Unit

(2) 2008 International Workstar 7400 T/A Dump Trucks, Maxxforce 9, Automatic, Hendrickson Rubber Pad Suspension, 15' Dump Box w/ Electric Tarp, Monroe 10' Snow Plow, City Units

2009 International Workstar 7500 S/A 4WD Dump Truck, 7.6L L6, Automatic, Spring Suspension, 10' Dump Box, Front Snow Plow Hookup, Force America Command All Controls, 35,350 lb. GVWR, City Unit

2005 International 7400 T/A Dump Truck, 9.3L L6, Automatic, Hendrickson Rubber Pad Suspension, Viking Pro-Line II 14' Live Bottom Dump Box, Tarp, Viking 11' Snow Plow, Rear & Side Spreaders, 53,220 lb. GVWR, 40,000 lb. Rears, 13,220 lb. Front Axle, Municipality Unit

FUEL & LUBE TRUCK

2001 Freightliner FL80 S/A Fuel and Lube Truck, Cummins Diesel, Autoshift, Air Ride Suspension, (8) Product Tanks, Feterl G2 8H Crane w/ Remote, 14" Service Bed, Rear Stabilizers, 36,220 lb. GVWR, County Unit

SERVICE TRUCK

2003 Ford F550 Super Duty XL 4x4 Service Truck, 6.0L V8 Turbo Diesel, Automatic, STI Tiger Truck Crane w/ Remote, 11' Utility Box, Dually, County Unit

TRUCK TRACTORS

2012 Mack CHU613 T/A Truck Tractor, Mack MP8 12.7L, 18-Speed, 4-Bag Air Ride, Wet Kit, 232" Wheel Base, 59,220 lb. GVWR, 46,000 lb. Rears, 13,220 lb. Front Axle, County Unit

2014 International ProStar T/A Truck Tractor, 12.4L L6, 10-Speed, 4-Bag Air Ride, Sleeper, 228" Wheel Base, 52,350 lb. GVWR, 40,000 lb. Rears, 12,350 lb. Front Axle

2005 Freightliner Business Class M2 S/A Truck Tractor, Caterpillar C7 Acert, Automatic, Spring Suspension, 152" Wheel Base

UTILITY TRUCKS

2010 Chevrolet Silverado 2500 4x4 Utility Truck, 6.0L, Automatic, 8' Utility Box

2008 Chevrolet Silverado 3500 Heavy Duty 4x4 Utility Truck, 6.0L, Automatic, 8' Utility Box

2007 Chevrolet Silverado 3500 4X4 Utility Truck,



KUBOTA L3830 4WD TRACTOR/ LOADER



2005 INTERNATIONAL 7400 T/A DUMP TRUCK, MUNICIPALITY UNIT



2008 INTERNATIONAL 7400 T/A DUMP TRUCK, CITY UNIT



2003 FORD F550 SUPER DUTY 4WD SERVICE TRUCK W/ CRANE, COUNTY UNIT



INTERNATIONAL 4900 S/A HIGH TOP UTILITY TRUCK W/ DT466, COUNTY UNIT



2012 FORD F150 4X4 PICKUP



2011 FORD F550 SUPER DUTY 4X4 BUCKET TRUCK W/ VERSALIFT 40' BOOM



2001 EMERGENCY ONE PUMPER TRUCK W/ CUMMINS ISM, CITY UNIT



2007 SMITHCO TRI-AXLE SIDE DUMP TRAILER, (1 OF 2)



T/A DUMP PUP TRAILER

UTILITY TRUCKS continued...

Duramax 6.6L, Automatic, 8' Utility Box

2005 GMC Sierra 3500 4X4 Utility Truck, Duramax 6.6L, Automatic, 8' Utility Box

2002 Chevrolet Silverado 2500 Heavy Duty 4x4 Utility Truck, 6.0L, Automatic, 8' Utility Box

1993 International 4900 S/A High Top Utility Truck, DT466 7.6L, 10-Speed, Spring Suspension, 15' Utility Box, County Unit

BUCKET TRUCK

2011 Ford F550 XL Super Duty 4x4 Super Cab Bucket Truck, Power Stroke B20, 6.7L, Automatic, Versalift VST-40SI Boom, 40" Platform Height, Stinger Winch Attachment, 11' Utility Box, Dually

FIRE TRUCK

2001 Emergency One S/A Pumper Truck, Cummins ISM 400, Automatic, City Unit

FLATBED TRUCKS

2015 Dodge Ram Heavy Duty 3500 4x4 Crew Cab Flatbed Truck, Cummins Turbo Diesel

(2) 2005 Isuzu NPR-HD 4000 S/A Crew Cab Flatbed Trucks, 5.2L Intercooled Turbo Diesel, Auto, 16' Bed

MOBILE OFFICE

1996 International 3800 RWD Mobile Office, 7.6L L6, Automatic, Dually, 4-Cylinder Diesel Generator, 9,180 Hrs., (4) New Rooftop A/C Units, Fold Out Sitting Area, (3) Water Tanks - (2) Grey & (1) Black, Hydraulic Entry Platform, Wheelchair Lift, County Unit

PICKUP TRUCKS

Great Selection Of Pickups Including:

2018 Dodge Ram 1500 4x4 Crew Cab Pickup, 5.7L, Automatic

2014 Dodge Ram 2500 Heavy Duty 4x4 Crew Cab Pickup, 5.7L, Automatic

2012 Ford F150 XL 4X4 Pickup, 5.0L V8, Automatic

2005 Ford E350 Cargo Van, 6.8L, Automatic

LOWBOY TRAILER

2006 Specialized XL120HDG Tri-Axle Lowboy Trailer, 60-Ton Capacity, Detachable Gooseneck, 52' Overall Length, 9' Wide, 26' Well, 151,080 lb. GVWR, Air Ride Suspension, w/ Mod. XL22MB Stinger, County Unit

SIDE DUMP TRAILERS

(2) 2007 Smithco Tri-Axle Side Dump Trailers, Air Ride

BELLY DUMP TRAILERS

2008 MANAC SBD-240 T/A Belly Dump Trailer, Single Gate, Spring Suspension, Electric Tarp, 68,000 lb. GVWR, County Unit

T/A Dump Pup Trailer, 8' x 10' Dump Box, Spring Suspension

HYDRAULIC TAIL TRAILER

2006 Ledwell T/A Hydraulic Tail Trailer, 48' x 102", Air Ride Suspension, Braden Winch

ASSORTED TRAILERS

Great Selection Of Equipment Trailers Including:

2015 Big Tex T/A Hydraulic Dump Trailer, 7'x16'

(2) 2007 Diamond T Skid Pro Equipment Trailers, 18' Deck, 2' Dovetail, Fold-Down Ramps

1993 TEM T/A Tilt Bed Equipment Trailer, 14' Deck, 2' Dovetail, Pintle Hitch, County Unit

1999 T/A Reel Trailer, (3) Reels, Rear Pneu. Reel Lift



2010 CHEVROLET SILVERADO 2500 4X4 UTILITY TRUCK



2005 ISUZU NPR FLATBED TRUCK, (1 OF 2)



2006 SPECIALIZED TRI-AXLE 60-TON LOWBOY TRAILER W/ STINGER, COUNTY UNIT



2006 LEDWELL HYDRAULIC TAIL TRAILER, 48' X 102"



2007 DIAMOND T SKID PRO EQUIPMENT TRAILER



NEW 40' STEEL STORAGE CONTAINER, HIGH CUBE



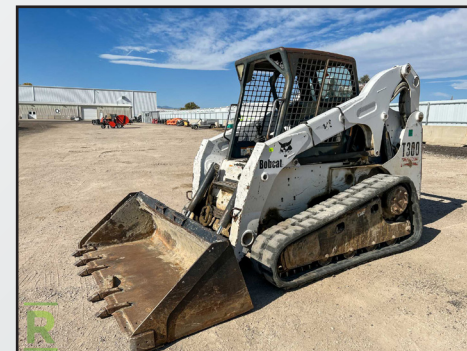
2019 DOOSAN 70KW TOWABLE GENERATOR



2008 GODWIN 12" TOWABLE PUMP W/ CATERPILLAR C15, 350 HOURS, CITY UNIT



1000 GALLON CONVAULT, MUNICIPALITY UNIT



2003 BOBCAT T300 CRAWLER SKID STEER LOADER

STEEL STORAGE CONTAINERS & VAN TRAILERS

New 40' Steel Storage Container, High Cube, (4) Side Door Openings

New 8' & 9' Steel Storage Containers, Side Entry Door & Window

1996 Trailmobile T/A Van Trailer, 53' x 102"

1996 Road Systems S/A Van Trailer, 28' x 102"

PUMPS, POWER PACKS & AIR HEATER

2008 Godwin Tri-Axle Towable Pump, 12" Capacity, Caterpillar C15 Diesel Engine, Pintle Hitch, 350 Hours, City Unit

Godwin 6" Towable Pump, John Deere Diesel, Pintle Hitch, Hour Reads: 4504, S/N: 97109419

2016 Eagle S/A Utility Trailer w/ Wolverine WP-67HD Hydraulic Power Pack, Kubota 4-Cylinder Diesel, Hose Reels, Ball Hitch

S/A Utility Trailer, w/Products GB80JD Hydraulic Power Pack, John Deere Diesel, Hose Reels, Ball Hitch

Allmand Maxi-Lite Towable Light Tower, Lister Diesel,

GENERATORS

2019 Doosan G70WD0-3A-T4F T/A Towable Generator, 70KW, 4-Cylinder Diesel, Pintle Hitch, Hour Reads: 3768

Onan Skid Mounted Standby Generator, 200KW, Allis Chalmers Diesel, Hours: 2504

MESSAGE & ARROW BOARDS

(2) 2014 Wanco Towable Message Boards, Solar Powered w/ Batteries, Ball Hitch, County Units

(4) 2011 Addco Towable Message Boards, Solar Powered w/ Batteries, Ball Hitch, County Units

2009 Wanco Towable Arrow Board, Solar Powered With Batteries, Ball Hitch, County Unit

2000 Wanco Towable Arrow Board, Solar Powered w/ Batteries, Ball Hitch, County Unit

CONVAULTS

(2) ConVault 1,000 Gallon Flammable Liquids Containment Tanks w/ Pumps, Municipality Units

OVER (300) NEW SKID STEER ATTACHMENTS

New Snow Pushers To Fit Skid Steer Loader & Loader/ Backhoes

New Hydraulic Posthole Digging Attachments To Fit Skid Steer Loader with 12" and 18" Auger Bits

New 76" Hydraulic Skeleton Grapple Buckets To Fit Skid Steer Loader, Single Cylinder

New Kivel 48" Fork Attachments To Fit Skid Steer Loader

New Hydraulic Bale Grappling Hooks To Fit Skid Steer Loader

New Hydraulic Grader Attachments To Fit Skid Steer Loader

New Hydraulic Tree Pulling Attachments To Fit Skid Steer Loader

New Hydraulic Dozer Blades To Fit Skid Steer Loader

New Hydraulic 72" Brush Cutting Attachments To Fit Skid Steer Loader

New Skid Steer Buckets & Rock Buckets, Various Sizes

New 72" Hydraulic Rototiller Attachments To Fit Skid Steer Loader



NEW 8' & 9' STEEL STORAGE CONTAINERS



ONAN 200KW SKID MOUNTED DIESEL GENERATOR



ADDCO TOWABLE MESSAGE BOARDS, COUNTY UNITS



2009 CATERPILLAR 279C CRAWLER SKID STEER LOADER



2000 JOHN DEERE 250 SKID STEER LOADER



2016 RAMMAX 1575 TRENCH COMPACTOR



2009 INTERNATIONAL WORKSTAR 7500 4WD DUMP TRUCK, CITY UNIT



NEW SKID STEER BRUSH MOWERS



NEW SKID STEER POSTHOLE DIGGING ATTACHMENTS



2015 BIG TEX HYDRAULIC DUMP TRAILER

NEW SKID STEER ATTACHMENTS continued...

New Hydraulic Cement Mixer Attachments To Fit Skid Steer Loader

New Hydraulic Breaker Attachments To Fit Skid Steer Loader

New Landscaping & Root Rakes To Fit Skid Steer Loader

New 72" Hydraulic Vibratory Roller Attachments To Fit Skid Steer Loader

New Hydraulic 72" Box Broom/ Sweeper Attachments To Fit Skid Steer Loader

New Hydraulic 72' Hydraulic Angle Broom Attachments To Fit Skid Steer Loader

New Hydraulic Trencher Attachments To Fit Skid Steer Loader

NEW TIRES

(5) Sets of (4) New Loadmaxx 12-16.5 Skid Steer Tires w/ Wheels

(4) Sets of (4) New Camso 10-16.5 Skid Steer Tires with Wheels

(5) Sets of (4) New Camso 12-16.5 Skid Steer Tires

(5) Sets of (4) New Camso 10-16.5 Skid Steer Tires

MISCELLANEOUS

(12) New 20' Bi-Parting Wrought Iron Gate Sets

(3) New 14' Bi-Parting Wrought Iron Gate Sets

New 2022 Gold Mountain Storage Shelters

New Moto 50cc Kids Motorcycles

New Bastone Portable Toilets w/ Showers

New 30" x 90" Metal Work Tables, 10-Gauge Top

New 30" x 57" Steel Welding Tables with Lower Shelf

New Fork Extensions

Steel Scaffolding, Alluminum Planks

Curb & Gutter Forms, Various Sizes



NEW SNOW PUSHERS FOR SKID STEERS



2015 DODGE HD RAM 3500 4X4 FLATBED TRUCK



2005 FREIGHTLINER BUSINESS CLASS M2 S/A TRUCK TRACTOR



T/A REEL TRAILER W/ 3 REELS & PNEUMATIC REEL LIFT



NEW SKID STEER GRAPPLE BUCKETS



NEW SKID STEER TIRES



NEW FORK ATTACHMENTS FOR SKID STEERS

AUCTION INFORMATION

DATE: Wednesday, November 9th, 2022

ADDRESS: 7500 York Street, Denver, CO 80229

DIRECTIONS: Southbound I-25: Take the 84th Ave. Exit, #219, go east to Washington Ave., then south to 78th Ave., then east to York . then south on York approx. 3 blocks. Northbound I-25: Take the I-76 Exit #216A, then veer left onto the 70th Ave. Exit #216B, then east on 70th Ave. approx. 1.3 miles to York, then 2 blocks north. Westbound on I-270: Take the York St. Exit #1, then proceed north approx. 1 mile. Eastbound on I-76: Take the 74th Ave Exit #8, then go back west approx. 1 mile to York St., then 2 blocks north. Watch for auction signs.

INSPECTION: November 7th & 8th from 8:15am to 4:45pm and the morning of the auction at 7:00am.

Auction location is 7500 York St., Denver, CO 80229.

BUYERS' PREMIUM: All purchases will be assessed a 13% Buyer's Premium. This will be added to the purchase price and is subject to all applicable sales taxes. [3% discount is available - see payment terms].

PAYMENT TERMS: Full payment required by 4:45pm on Monday, November 14th, in cash, certified funds, bank wire transfer, checks approved by Telecheck or accompanied by bank letter, Visa, MasterCard or Discover. If paying in full in cash, cashier check, bank wire transfer or check with a letter of guarantee, a 3% reduction off of the stated buyers' premium is given.

Due to the Coronavirus and the goal to reduce interactions and maintain social distancing. Our Payment terms will be modified going forward as we attempt to have all electronic payments.

- Payments under \$1000 will be automatically charged to the credit card on file, immediately following the auction.
- Payments over \$1000 can be made by bank wire transfer and cash deposits made directly into our account at a Chase Bank.
- Cashier Checks will be accepted in our office, at this time we are not accepting cash in the office
- Payments in bank wire transfer and those directly deposited into our account will receive a 3% reduction off the buyer's premium.

REMOVAL: All purchases must be removed at buyers' expense and responsibility by 4:45 p.m. on Friday, November 18th, 2022. Hours are 8:15am-4:45pm on weekdays. No removal on the weekend. Removal must be scheduled by appointment only through Our Scheduling System. You will receive a link to this in your invoice after the auction.

TWO UPCOMING INTERNET AUCTIONS:

VEHICLES, CONTRACTING & RENTAL YARD EQUIPMENT

Wednesday • November 16th
at 8:30am

7500 York St Denver, CO 80229

Inspection: November 14th & 15th
from 8:15am - 4:45pm

The auction typically includes: vehicles, trailers, lawn and garden equipment, attachments, rental yard equipment, shop equipment, concrete equipment, generators, toolboxes, and more!



GOVERNMENT/FLEET VEHICLES & EQUIPMETN

Wednesday • December 7th
at 9:00am

7500 York St Denver, CO 80229

Inspection: December 5th & 6th
from 8:15am - 4:45pm

The auction typically includes: Pickups, SUV's, Sedans, Police Vehicles, Trailers, Attachments, and More!



Contact Steve @ 303-289-1600 x 104 if you have quality construction equipment you want to get into our January auction!