



2005 KENWORTH T800 T/A TRUCK TRACTOR

WHAT

An auction of heavy construction equipment from companies, local contractors & Government Entities

WHEN

Wednesday, January 18th @ 9:00am

Inspection: January 16th & 17th from 8:15am - 4:45pm

WHERE

7500 York Street, Denver, CO 80229

INTERNET AUCTION



SELLING FOR

Cities & Counties
plus
Local Contractors

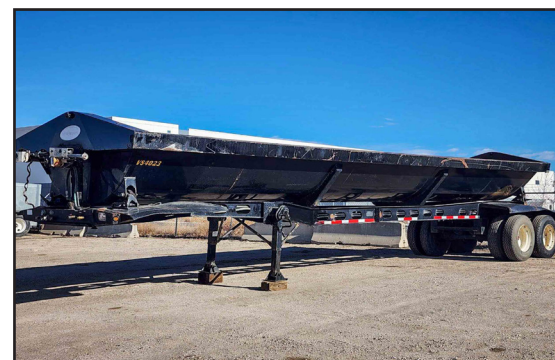
HEAVY CONSTRUCTION & CONTRACTING EQUIPMENT

WEDNESDAY • January 18th • 9:00 A.M.

Inspection: January 16th & 17th from 8:15 a.m. to 4:45 p.m.



2008 FORD F750 DIGGER DERRICK TRUCK, [1 OF 2]



2013 VERADYN T/A SIDE DUMP TRAILER

AUCTION INCLUDING:

Motor Grader	Reel & Pole Trailers
Loader/Backhoes	Lowboy Trailers
Hydraulic Excavators	Equipment Trailers
Skid Steer Loaders	Storage Containers
Truck Tractors	New Attachments
Telescopic Forlift	Much More!
Forklifts	
Boomlift	
Utility Trucks	
Flatbed Trucks	
Compaction Equipment	
Side Dumps	
Farm Tractors	
Pickups	
Digger Derricks	

Heavy Construction & Contracting Equipment



2013 JOHN DEERE 410K 4WD LOADER / BACKHOE, EXTENDAHOE

7500 York Street • Denver, Colorado 80229
WEDNESDAY • January 18th • 9:00 A.M.
Inspection: January 16th & 17th 8:15 a.m. to 4:45 p.m.

Internet Only Auction • Bidding Available at:
www.RollerAuction.com/construction



2019 JOHN DEERE 332G SKID STEER LOADER
W/ 562 HOURS

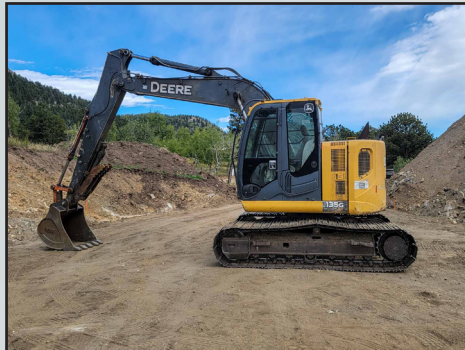


1998 CATERPILLAR CP-323C RIDE-ON
SHEEPSFOOT COMPACTOR

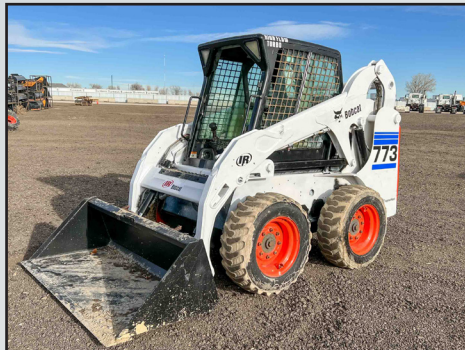
• Motor Grader	• Hydraulic Excavators	• Truck Tractors	• Forklifts	• Farm Tractors	• Storage Containers
• Loader/Backhoes	• Skid Steer Loaders	• Telescopic Forklifts	• Digger Derricks	• Equipment Trailers	• New Attachments



2010 JOHN DEERE 410J 4WD
LOADER/ BACKHOE, EXTENDAHOE



2014 JOHN DEERE 135G HYDRAULIC
EXCAVATOR



2001 BOBCAT 773 SKID STEER LOADER



DRESSER A500E MOTOR GRADER



VIEW OF TOYOTA PROPANE FORKLIFTS

LOADER/ BACKHOES

2013 John Deere 410K 4WD Loader/ Backhoe, Extendahoe, Auxiliary Hydraulics, Front Quick Coupler, EROPS, Heat & A/C, 24" Hoe Bucket, S/N: 1T0410KXLDE247915

2010 John Deere 410J 4WD Loader/ Backhoe, Extendahoe, Auxiliary Hydraulics, Front Quick Coupler, EROPS, Heat & A/C, 24" Hoe Bucket, S/N: T0410JXPA0183280

FerMac 860 4WD Loader/Backhoe, Extendahoe, Turbo, EROPS, 36" Hoe Bucket With Thumb Attachment, Hour Reads: 3687, S/N: 860192

HYDRAULIC EXCAVATORS

2014 John Deere 135G Hydraulic Excavator, Thumb Attachment, Hour Meter Reads: 6404, S/N: 1FF135GXED400197

SKID STEER LOADERS

2019 John Deere 332G Skid Steer Loader, Enclosed Cab w/ Heat & A/C, High Flow & Auxiliary Hydraulics, Rear Backup Camera, Rear Counterweights, New Maximizer Solid Tires & Wheels, 84" Bucket, Hour Meter Reads: 562, S/N: 1T0332GMCKF355799

2016 John Deere 326E Skid Steer Loader, Enclosed Cab w/ Heat & A/C, Auxiliary Hydraulics, S/N: 1T0326EKEGJ299149

2016 John Deere 324E Skid Steer Loader, Enclosed Cab w/ Heat & A/C, Auxiliary Hydraulics, S/N: 1T0324EMCGJ300184

2012 John Deere 333D Crawler Skid Steer Loader, Enclosed Cab w/ Heat & A/C, High Flow & Auxiliary Hydraulics, Joystick Controls, 16" Rubber Tracks, 84" Bucket, Hour Meter Reads: 3643, S/N: 1T0333DMECD225060

Thomas LT250ST Skid Steer Loader, Auxiliary Hydraulics, New McLaren Solid Tires & Wheels, 72" Bucket, Hour Meter Reads: 1779, S/N: LT000149

2001 Bobcat 773 Skid Steer Loader, Auxiliary Hydraulics, 66" Bucket, Hour Reads: 3304, S/N: 519023745

2000 John Deere 250 Skid Steer Loader, Auxiliary Hydraulics, 72" Bucket, Hour Reads: 1240, S/N: KV0250A253511

MOTOR GRADER

Dresser A500E Motor Grader, Front Snow Plow, 14' Moldboard, S/N: G810004U100456

COMPACTION EQUIPMENT

1998 Caterpillar CP-323C Ride-On Vibratory Sheepfoot Roller, 50" Drum, 61" Backfill Blade, Canopy, Hour Meter Reads: 4787, S/N: 6DM00310

BOOMLIFT

1997 Genie S-40 Boomlift, 40' Lift Height, Dual Fuel, Gas & Propane, 72" Basket, Hour Meter Reads: 5501, S/N: 922

TELESCOPIC FORKLIFT

Genie GTH-1056 4WD Telescopic Forklift, 10,000 lb. Capacity, 56' Reach, 4-Stage Boom, Hydraulic Outriggers, John Deere Diesel, 48" Forks, Hour Meter Reads: 7156, S/N: GTH1008A12816

FORKLIFTS

2006 Toyota 7FGU25 Propane Forklift, 5000 lb. Capacity, 147" Lift Height, 3-Stage Mast, Side Shift, Solid Tires, 72" Forks, Hour Meter Reads: 5322, S/N: 81012

2004 Toyota 7FGU25 Propane Forklift, 5000 lb. Capacity, 147" Lift Height, 3-Stage Mast, Side Shift, Solid Tires, 72" Forks, Hour Meter Reads: 3937, S/N: 72161

2004 Toyota 7FGU25 Propane Forklift, 5000 lb. Capacity, 147" Lift Height, 3-Stage Mast, Side Shift, Solid Tires, 72" Forks, Hour Meter Reads: 6544, S/N: 72102



FERMAC 860 4WD LOADER/ BACKHOE,
EXTENDAHOE



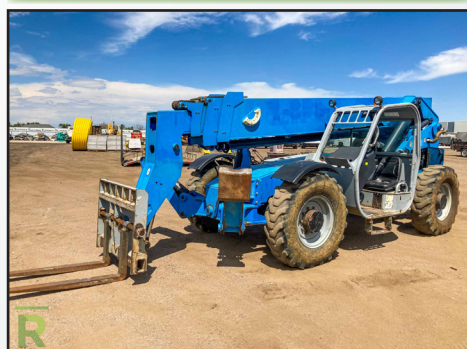
THOMAS LT250ST SKID STEER LOADER



2012 JOHN DEERE 333D CRAWLER
SKID STEER LOADER



GENIE S-40 BOOMLIFT, 40' LIFT HEIGHT



GENIE GTH-1056 TELESCOPIC FORKLIFT,
10,000 LB. CAPACITY



TOYOTA PROPANE FORKLIFT



2000 JOHN DEERE 250 SKID STEER LOADER



2008 FORD F750 SERVICE TRUCK
W/ AUTO CRANE



2016 JOHN DEERE 324E SKID STEER LOADER



TETON TRI-AXLE LOWBOY TRAILER,
48' OVERALL LENGTH

FORKLIFTS continued...

2000 Toyota 7FGU25 Propane Forklift, 5000 lb. Capacity, 147" Lift Height, 3-Stage Mast, Side Shift, Solid Tires, 72" Forks, Hour Meter Reads: 6554, S/N: 62659

2000 Toyota 7FGU25 Propane Forklift, 5000 lb. Capacity, 147" Lift Height, 3-Stage Mast, Side Shift, Solid Tires, 72" Forks, S/N: 62442

TRACTORS

John Deere 950 4WD Tractor/ Loader

John Deere F935 Tractor, 3-Cylinder, w/ 72" Deck Mower, 51" Broom Attachment, 42" Aerator Attachment, Hour Reads: 2200, S/N: M0F935X160326

DIGGER DERRICK TRUCKS

(2) 2008 Ford F750XL S/A Super Duty Digger Derrick Trucks, Cummins Diesel, 6-Speed Manual Transmission, Altec DM45BR Boom, Front & Rear Hydraulic Stabilizers, 33,000 lb. GVWR, 12' Utility Box

2000 GMC C7500 S/A Digger Derrick Truck, Caterpillar 3126, Automatic, Spring Suspension, Terex Commander 4045 Boom, Front and Rear Hydraulic Stabilizer, Braden Front Winch

TRUCK TRACTORS

(4) 2005 Kenworth T800 T/A Truck Tractors, Cummins ISM 14.6L L6, Automatic, Chalmers Suspension, Hydraulic 5th Wheel, 172" Wheel Base

2004 Kenworth T800 T/A Truck Tractor, Cummins ISM, Automatic, Chalmers Suspension, Hydraulic 5th Wheel, 172" Wheel Base

2000 Kenworth T800B T/A Truck Tractor, Detroit Series 60. 12.7L, Automatic, Chalmers Suspension, Hydraulic 5th Wheel, 172" Wheel Base

2010 International PayStar T/A Truck Tractor, Cummins ISX, 14.9L L6, 435 HP, Automatic, Chalmers Suspension, Hydraulic 5th Wheel, 178" Wheel Base

(4) 2011 International PayStar T/A Truck Tractors, MaxxForce 13.0L L6, Automatic, Chalmers Suspension, Hydraulic 5th Wheel. 178" Wheel Base

SERVICE TRUCK

2008 Ford F750 Super Duty XL RWD Service Truck, Caterpillar C7 Acert, 7.2L L6, 6-Speed Manual, Dually, Auto Crane 10006H Crane, 10,000 lb. Capacity, w/ Remote, Rear Stabilizers, 11' Utility Box, Compressor

FLATBED TRUCKS

2011 Dodge Ram 3500 Heavy Duty 4x4 Crew Cab Flatbed Truck, Cummins Turbo, Automatic, 9' Bed, Dually

1993 Ford F450 Super Duty 4WD Flatbed Truck, 7.5L V8 EFI, 5-Speed Manual, Dually, 8' Bed, Ramsey 10,000 lb. Capacity Winch

UTILITY TRUCKS AND PICKUPS

2005 Chevrolet Silverado 1500 4WD Supercab Pickup, 5.3L

2005 Ford F350 Super Duty XL 4WD Super Cab Pickup, 6.8L

1998 Ford F150 4WD Extended Cab Pickup, 4.6L

2001 Ford F150 XL RWD Pickup, 4.2L

More to be added!

SIDE DUMP TRAILER

2013 Veradyn T/A Side Dump Trailer, Air Ride Suspension, Electric Tarp, 80,000 lb. GVWR

LOWBOY TRAILERS

1985 Homemade Teton Tri-Axle Lowboy Trailer, 8' Wide x 48' Overall Length, Spring Suspension

1987 Transtech T/A Lowboy Trailer, 46' x 102", Air Ride Suspension



1998 CATERPILLAR CP-323C RIDE-ON
SHEEPSFOOT COMPACTOR



2011 INTERNATIONAL PAYSTAR T/A
TRUCK TRACTOR



FAIR SNOCRETE 842SI HYDRAULIC
SNOWBLOWER ATTACHMENT



2016 JOHN DEERE 326E SKID STEER LOADER



TRANSTECH T/A LOWBOY TRAILER,
46' OVERALL LENGTH



NEW 40' STEEL STORAGE CONTAINER



ENCLOSED TRAILER W/ ONAN 12.5 KVA GENERATOR



NEW BRUSH MOWING ATTACHEMNTS TO FIT SKID STEER



NEW POSTHOLE DIGGING ATTACHMENTS TO FIT SKID STEER



NEW FORK ATTACHMENTS TO FIT SKID STEER

REEL TRAILERS AND POLE TRAILERS

- 1996 Sauber 1500 S/A Reel Trailer, Pintle Hitch
- (3) 1989 Sauber 1555 S/A Reel Trailers, Pintle Hitch
- 2001 SEL S/A Reel Trailer, Pintle Hitch
- (3) 1999 Taylor T/A Reel Trailers, (2) Reels, Pintle Hitch
- 1998 Sherman Reilly S/A Hydraulic Reel Trailer, Pintle Hitch

PRESSURE WASHING TRAILERS

- 1988 Butler T/A Pressure Washer Trailer, Hotsy 1075BE 3,500 PSI Pressure Washer, Gas Engine, Diesel Burner, 525 Gal Poly Tank, Pintle Hitch

- Ran T/A Pressure Washer Trailer, Hotsy Pressure Washer, Honda Generator, Pintle Hitch

STORAGE CONTAINERS

- New 40' Steel Storage Container, High Cube, (4) Side Door Openings

- New Steel Storage Container 9'D x 87" W x 8' H With Side Entry Door & Window

- New Steel Storage Container 8'D x 80" W x 85" H With Side Entry Door & Window

GENERATOR

- S/A Enclosed Trailer, 5' x 8', w/ Onan Propane Powered Generator, 12.5 KVA, Breaker & Starter Box, 1-Phase, 1400 Hours, Swing Open Back Door

OVER (250) NEW SKID STEER ATTACHMENTS

- New Snow Pushers To Fit Skid Steer Loader & Loader/Backhoes

- New Hydraulic Posthole Digging Attachments To Fit Skid Steer Loader with 12" and 18" Auger Bits

- New 76" Hydraulic Skeleton Grapple Buckets To Fit Skid Steer Loader, Single Cylinder

- New Kivel 48" Fork Attachments To Fit Skid Steer Loader

- New Hydraulic Bale Grappling Hooks To Fit Skid Steer Loader

- New Hydraulic Grader Attachments To Fit Skid Steer Loader

- New Hydraulic Tree Pulling Attachments To Fit Skid Steer Loader

- New Hydraulic Dozer Blades To Fit Skid Steer Loader

- New Hydraulic 72" Brush Cutting Attachments To Fit Skid Steer Loader

- New Skid Steer Buckets & Rock Buckets, Various Sizes

- New 72" Hydraulic Rototiller Attachments To Fit Skid Steer Loader

- New Hydraulic Cement Mixer Attachments To Fit Skid Steer Loader

- New Hydraulic Breaker Attachments To Fit Skid Steer Loader

- New Landscaping & Root Rakes To Fit Skid Steer Loader

- New 72" Hydraulic Vibratory Roller Attachments To Fit Skid Steer Loader

- New Hydraulic 72" Box Broom/ Sweeper Attachments To Fit Skid Steer Loader

- New Hydraulic 72' Hydraulic Angle Broom Attachments To Fit Skid Steer Loader

- New Hydraulic Trencher Attachments To Fit Skid Steer Loader



VIEW OF 8' & 9' STEEL STORAGE CONTAINERS



NEW DRIVEWAY GATES



NEW GRAPPLE BUCKETS TO FIT SKID STEER



VIEW OF NEW SKID STEER BUCKETS



VIEW OF NEW SKID STEER TIRES

AUCTION INFORMATION

DATE: Wednesday, January 18th, 2023

ADDRESS: 7500 York Street, Denver, CO 80229

DIRECTIONS: Southbound I-25: Take the 84th Ave. Exit, #219, go east to Washington Ave., then south to 78th Ave., then east to York . then south on York approx. 3 blocks. Northbound I-25: Take the I-76 Exit #216A, then veer left onto the 70th Ave. Exit #216B, then east on 70th Ave. approx. 1.3 miles to York, then 2 blocks north. Westbound on I-270: Take the York St. Exit #1, then proceed north approx. 1 mile. Eastbound on I-76: Take the 74th Ave Exit #8, then go back west approx. 1 mile to York St., then 2 blocks north. Watch for auction signs.

INSPECTION: January 16th & 17th from 8:15am to 4:45pm
Auction location is 7500 York St., Denver, CO 80229.

BUYERS' PREMIUM: All purchases will be assessed a 13% Buyer's Premium. This will be added to the purchase price and is subject to all applicable sales taxes. [3% discount is available - see payment terms].

PAYMENT TERMS: Full payment required by 4:45pm on Monday, January 23rd, in cash, certified funds, bank wire transfer, checks approved by Telecheck or accompanied by bank letter, Visa, MasterCard or Discover. If paying in full in cash, cashier check, bank wire transfer or check with a letter of guarantee, a 3% reduction off of the stated buyers' premium is given.

Due to the Coronavirus and the goal to reduce interactions and maintain social distancing. Our Payment terms will be modified going forward as we attempt to have all electronic payments.

- Payments under \$1000 will be automatically charged to the credit card on file, immediately following the auction.
- Payments over \$1000 can be made by bank wire transfer and cash deposits made directly into our account at a Chase Bank.
- Cashier Checks will be accepted in our office, at this time we are not accepting cash in the office
- Payments in bank wire transfer and those directly deposited into our account will receive a 3% reduction off the buyer's premium.

REMOVAL: All purchases must be removed at buyers' expense and responsibility by 4:45 p.m. on Friday, January 27th, 2023. Hours are 8:15am-4:45pm on weekdays. No removal on the weekend. Removal must be scheduled by appointment only through Our Scheduling System. You will receive a link to this in your invoice after the auction.

NEW TIRES

New Titan 17.5-R31.5 MXL-L3 Equipment Tires

(5) Sets of (4) New Forerunner 12-16.5 Skid Steer Tires w/ Wheels

(4) Sets of (4) New Forerunner 10-16.5 Skid Steer Tires with Wheels

(5) Sets of (4) New Forerunner 12-16.5 Skid Steer Tires

(5) Sets of (4) New Forerunner 10-16.5 Skid Steer Tires

(9) New Sets Of Radial Trailer Tires

MISCELLANEOUS

(12) New 20' Bi-Parting Wrought Iron Gate Sets

New 2022 Gold Mountain Storage Shelters

New Moto 50cc Kids Motorcycles

New Bastone Portable Toilets w/ Showers

New 30" x 90" Metal Work Tables, 10-Gauge Top

New 30" x 57" Steel Welding Tables with Lower Shelf

New Steelman 10' 30-Drawer Toolboxes

New Fork Extensions

Bunks Of Wood Timbers, Various Sizes

New Chain/ Binder Sets

New Steelman Anvils

New Plate Compactors and Jumping Jacks

New PVC 28" Orange Traffic Cones

HYDRAULIC SNOW BLOWER

Fair Snocrete 842SI Hydraulic Snow Blower Attachment To Fit Wheel Loader, John Deere Diesel, 8' Width x 4' High Opening, 12" Discharge Chute

TWO UPCOMING INTERNET AUCTIONS:

VEHICLES, CONTRACTING & RENTAL YARD EQUIPMENT

Tuesday • January 24th
at 8:30am

7500 York St Denver, CO 80229
Inspection: January 23rd
from 8:15am - 4:45pm

The auction typically includes: vehicles, trailers, lawn and garden equipment, attachments, rental yard equipment, shop equipment, concrete equipment, generators, toolboxes, gang boxes, ladders and more!



GOVERNMENT/FLEET VEHICLES & EQUIPMENT

Wednesday • February 15th
at 9:00am

7500 York Street Denver, CO 80229
Inspection: February 13th & 14th
from 8:15am - 4:45pm

The auction typically includes: Pickups, SUV's, Sedans, Police Vehicles, Trailers, Attachments, and More!



Contact Steve @ 303-289-1600 x 104 if you have quality construction equipment you want to get into our March auction!