

Roller AUCTION

7500 York Street
Denver, CO 80229



1995 PETERBILT 379 T/A DUMP TRUCK W/ CUMMINS

WHAT

An auction of heavy construction equipment from companies, local contractors & government entities

WHEN

Wednesday, March 15th @ 9:00am
Inspection: March 13th & 14th
from 8:15am - 4:45pm

WHERE

7500 York Street, Denver, CO 80229

PRESORTED
FIRST CLASS MAIL
U.S. POSTAGE
PAID
DENVER CO
PERMIT # 4033

INTERNET AUCTION



CONSTRUCTION & CONTRACTING EQUIPMENT

WEDNESDAY • March 15th • 9:00 A.M.

Inspection: March 13th & 14th from 8:15 a.m. to 4:45 p.m.



2005 HYSTER H190HD DIESEL FORKLIFT,
19,000 LB. CAPACITY



2019 KUBOTA KX057-4 HYDRAULIC EXCAVATOR
W/ 1328 HOURS

SELLING FOR

Arapahoe County
Weld County
City of Aurora
City of Arvada
Xcel Energy
Left Hand Water
Local Contractors

AUCTION INCLUDING:
Motor Graders, Wheel Loaders,
Loader/Backhoes,
Hydraulic Excavators, Skid
Steer Loaders, Asphalt Pavers,
Vibratory Rollers, Truck
Tractors, Forklifts, Dump Trucks,
Lowboy Trailers, Utility Trucks,
Flatbed Trucks, Trenchers,
Bucket Trucks, Pickups,
Equipment Trailers,
Storage Containers,
Generators,
New Skid Steer Attachments
Much More!

Roller & Associates, Inc.

7500 York Street • Denver, Colorado 80229 • (303) 289-1600 • www.rollerauction.com

Construction & Contracting Equipment



**2017 VOGELE SUPER 1700-3
ASPHALT PAVER W/ 1085 HOURS**

7500 York Street • Denver, Colorado 80229
WEDNESDAY • March 15th • 9:00 A.M.

Inspection: March 13th & 14th from 8:15 a.m. to 4:45 p.m.

Internet Only Auction • Bidding Available at:
www.RollerAuction.com/construction



**2010 CATERPILLAR 140M VHP PLUS
MOTOR GRADER, (1 OF 2), COUNTY UNIT**

Roller & Associates, Inc.

7500 York Street • Denver, Colorado 80229 • (303) 289-1600 • www.rollerauction.com



2010 JOHN DEERE 772GP 6WD
MOTOR GRADER, COUNTY UNIT



2013 JOHN DEERE 410K 4WD
LOADER/ BACKHOE, EXTENDAHOE



JOHN DEERE 110 4WD LOADER/ BACKHOE



2015 CASE SV300 SKID STEER LOADER



2018 LEEBOY 8500D ASPHALT PAVER
W/ 1468 HOURS

MOTOR GRADERS

2010 Caterpillar 140M VHP Plus Motor Grader, 16' Moldboard, A/C & Heat, Joystick Controls, Front Lift Group, Hour Meter Reads: 14,993, S/N: CAT0140MCB9D02089, County Unit

2010 Caterpillar 140M VHP Plus Motor Grader, 16' Moldboard, A/C & Heat, Joystick Controls, Front Lift Group, Hour Meter Reads: 16,190, S/N: CAT0140MKB9D02090, County Unit

2010 John Deere 772GP 6WD Motor Grader, Rear Ripper, 16' Moldboard, Front Lift Group, A/C & Heat, Hour Meter Reads: 13,217, S/N: DW772GP628512, County Unit

LOADER/ BACKHOES

2013 John Deere 410K 4WD Loader/Backhoe, Extendahoe, Auxiliary Hydraulics, Front Quick Coupler, EROPS, Heat & A/C, 24" Hoe Bucket, Hour Meter Reads: 10,584, S/N: 1T0410KLDE247915

1998 Caterpillar 446B 4X4 Loader/Backhoe, Turbo, EROPS, 24" Bucket With Thumb, Hour Meter Reads: 6573, S/N: 5BL01869, City Unit

John Deere 310D 4WD Loader/Backhoe, Extendahoe, EROPS, Heat & A/C, 24" Hoe Bucket, 18" Sheepsfoot Compaction Wheel, Hour Meter Reads: 6622, S/N: T0310DG812912, Municipality Unit

John Deere 110 4WD Loader/Backhoe, ROPS, 12" Hoe Bucket, S/N: LV0110T511591

SKID STEER LOADERS

2017 John Deere 332G Skid Steer Loader, Enclosed Cab w/ Heat & A/C, 2-Speed, Fork Attachment, Hour Meter Reads: 2189, S/N: 1T0332GMLHF314433

2015 Case SV300 Skid Steer Loader, Enclosed Cab With Heat & A/C, Ride Control, High Flow, Auxiliary Hydraulics, 72" Bucket, Stereo, Hour Meter Reads: 3643, S/N: NFM410796

2014 Bobcat T770 Crawler Skid Steer Loader, 2-Speed, Enclosed Cab w/Heat & A/C, Auxiliary Hydraulics, 17" Rubber Tracks, 78" Bucket With Teeth, Hour Meter Reads: 3908, S/N: AN8T13469

2008 New Holland L185 Skid Steer Loader, Auxiliary Hydraulics, 72" Bucket, Hour Meter Reads: 1926, S/N: N8M465978, County Unit

John Deere 318E Skid Steer Loader

Caterpillar 267B Crawler Skid Steer Loader

Bobcat 853 Skid Steer Loader

Case 75XT Skid Steer Loader

Gehl 6640 Skid Steer Loader, 2-Speed, Turbo, Auxiliary Hydraulics, 66" Bucket With Teeth, Hour Meter Reads: 1764, S/N: GHL06640H00606139

Gehl 5640 Skid Steer Loader, Turbo, Auxiliary Hydraulics, 72" Bucket, Hour Meter Reads: 5394, S/N: GHL05640A00507370

2011 Ditch Witch SK650 Mini Skid Steer Loader, Kubota 3 Cylinder Diesel, Auxiliary Hydraulics, 9" Rubber Tracks, 44" Bucket, Hour Meter Reads: 2585, S/N: CMWSK650AB0001975

ASPHALT PAVERS

2017 Voegel Super 1700-3i Asphalt Paver, Cummins Diesel, 173HP, Dual Controls, 16" Screed, 14" Rubber Tracks, Hour Meter Reads: 1085, S/N: 19820038

2018 Leeboy 8500D Asphalt Paver, Kubota Diesel, Legend Electric Screed System, 8'-15', Hour Meter Reads: 1468, S/N: 174847



1998 CATERPILLAR 446B 4WD
LOADER/ BACKHOE, CITY UNIT



JOHN DEERE 310D 4WD LOADER/ BACKHOE,
EXTENDAHOE, MUNICIPALITY UNIT



2014 BOBCAT T770 CRAWLER
SKID STEER LOADER, 2-SPEED



2008 NEW HOLLAND L185 SKID STEER LOADER
W/ 1926 HOURS, COUNTY UNIT



1995 CEDAR RAPIDS CR461 ASPHALT PAVER,
CUMMINS DIESEL



2016 BOMAG BW138AD-5 RIDE-ON VIBRATORY
SMOOTH DRUM ROLLER



2015 HAMM HD14VV RIDE-ON
VIBRATORY SMOOTH DRUM ROLLER



2000 CATERPILLAR CB434C RIDE-ON
VIBRATORY SMOOTH DRUM ROLLER



TEREX TH1056C TELESCOPIC FORKLIFT,
10,000 LB. CAPACITY



HYSTER H175FT DIESEL FORKLIFT, 17,500 LB.
CAPACITY

ASPHALT PAVERS continued

2016 Leeboy 8500D Asphalt Paver, Kubota Diesel, Legend Electric Screed System, 8'-15', Hour Meter Reads: 3170, S/N: 150817

1995 Cedar Rapids CR461 Asphalt Paver, Cummins Diesel, 18" Tracks, 10'-20' Screed, Hour Meter Reads: 9731, S/N: 44671

COMPACTION EQUIPMENT

2016 Bomag BW138AD-5 Ride-On Vibratory Smooth Drum Roller, Kubota 4-Cylinder, 54" Double Drums, Cleaning Pads, Hour Meter Reads: 2791, S/N: 101650341045

2016 Volvo DD31HF Ride-On Vibratory Smooth Drum Roller, Kubota 4-Cylinder, 48" Double Drums, Cleaning Pads, Spray Bars, Hour Meter Reads: 2780, S/N: VCE00D31E0S276173

2015 Hamm HD14VV Ride-On Vibratory Smooth Drum Roller, Kubota 4-Cylinder, 54" Double Drums, Cleaning Pads, Hour Meter Reads: 3561, S/N: H2012564

2015 Hamm HD8 Ride On Vibratory Smooth Drum Roller, Kubota 3 Cylinder Diesel, 31" Double Drums, Cleaning Pads, Hour Meter Reads: 1,042, S/N: H1993213

2014 Volvo DD29 Ride-On Vibratory Smooth Drum Roller, Kubota 4-Cylinder, 48" Double Drums, Cleaning Pads, Spray Bars, Canopy, Hour Meter Reads: 2902, S/N: VCE00D29C0S271046

2000 Caterpillar CB434C Ride On Vibratory Smooth Drum Roller, 56" Double Drums, Cleaning Pads, Spray Bars, Canopy, Hour Meter Reads: 2,340, S/N: 4DN00385

2013 Volvo DD38HF Ride On Vibratory Smooth Drum Roller, Kubota 4 Cylinder Diesel, 53" Double Drums, Cleaning Pads, Spray Bars, Hour Meter Reads: 4,979, S/N: 198796

Hamm 2210SSD Ride-On Sheepsfoot Roller, Vibratory, 53" Drum, 60" Front Blade, Hour Meter Reads: 1354, S/N: 40055

TELESCOPIC FORKLIFTS

Gradall 544D-10 4WD Telescopic Forklift, 10,000 lbs. Capacity, 54' Maximum Lift Height, 4-Stage Boom, Hydraulic Outriggers, Enclosed Cab, 60" Forks, Hour Meter Reads: 7253, S/N: 0355518

Terex TH1056C Telescopic Forklift, John Deere Turbo Diesel, 10,000Lb Capacity, 56' Reach, 4-Stage Boom, Front Hydraulic Stabilizers, 60" Forks, 14.00-24 Tires, Hour Meter Reads: 14,226, S/N: 056353

FORKLIFTS

2005 Hyster H190HD Forklift, Cummins Diesel, 19,000 lbs. Capacity, 183" Lift Height, Side Shift, Fork Positioning, Enclosed Cab With Heat & AC, Pneumatic Tires, Dual Fronts, 96" Forks, Hour Meter Reads: 6874, S/N: G007E02500C

Hyster H175FT Forklift, Turbo Diesel, 17,500 lbs. Capacity, 219" Lift Height, Side Shift, Fork Positioning, Enclosed Cab With Heat & AC, 96" Forks, Dual Front Solid Tires, Hour Meter Reads: 5208, S/N: B299V01780N

2007 Hyster H155FT Forklift, 15,500 lbs. Capacity, 212" Lift Height, Side Shift, Fork Positioning, 96" Forks, Enclosed Cab With Heat & AC, Dual Front Tires, Hour Meter Reads: 7264, S/N: H006V02170E



HAMM 2210SSD RIDE-ON SHEEPSFOOT ROLLER



2014 VOLVO DD29 RIDE-ON VIBRATORY
SMOOTH DRUM ROLLER



GRADALL 544D-10 TELESCOPIC FORKLIFT,
10,000 LB. CAPACITY



2017 JOHN DEERE 332G SKID STEER LOADER
W/ 2189 HOURS



2007 HYSTER H155FT DIESEL FORKLIFT,
15,500 LB. CAPACITY



LINKBELT 330LX HYDRAULIC EXCAVATOR
W/ HYDRAULIC THUMB



2013 BOBCAT E35 MINI EXCAVATOR
W/ 3871 HOURS



ASTEC RT660II RIDE ON TRENCHER
W/ BACKHOE, 579 HOURS



1997 KENWORTH T800 T/A DUMP TRUCK
W/ CUMMINS



2006 GMC C8500 T/A DUMP TRUCK
W/ DURAMAX DIESEL

HYDRAULIC EXCAVATOR

Linkbelt 330LX Hydraulic Excavator, EACO 48" Bucket w/ Hydraulic Thumb, Auxiliary Hydraulics, 32" TBG, Hour Meter Reads: 10,602, S/N: K6126528

MINI EXCAVATORS

2019 Kubota KX057-4 Mini Excavator, Enclosed Cab w/ Heat & A/C, Auxiliary Hydraulics, Backfill Blade, Rubber Tracks, (3) Buckets, Hour Meter Reads: 1328

2013 Bobcat E35 Mini Excavator, ROPS, Auxiliary Hydraulics, 24" Bucket, 12" Rubber Tracks, 69" Backfill Blade, Hour Meter Reads: 3871, S/N: A93K16485

2003 Bobcat 337 Mini Excavator, Kubota 4 Cylinder Diesel, Enclosed Cab, 24" Bucket w/ Thumb, Auxiliary Hydraulics, 76" Backfill Blade, 16" Rubber Tracks, Hour Meter Reads: 6468, S/N: 233312453

2023 Land Hero 12 Mini Excavator, 7" Rubber Tracks, 36" Backfill Blade, 15" Bucket, Hour Meter Reads: 0

WHEEL LOADER

Caterpillar IT28 Integrated Tool Carrier, Quick Coupler, No Bucket, Fork Attachment, Hour Meter Reads: , S/N: 2KC00872

TRENCHER

Astec RT660II Ride-On Trencher, w/ Mod. HD-125 Backhoe Attachment, Offset Trencher Boom w/ Crumber, 72" Backfill Blade, 16" Hoe Bucket, 4-Wheel Steer, John Deere Diesel, Canopy, Hour Meter Reads: 579, S/N: RT660IIX080123

TRACTORS

Massey Ferguson 40B Tractor/Loader, 3 Point, PTO, 6' Box Scraper With Ripper Teeth, Hour Meter Reads: 2642, S/N: 9A305263

DUMP TRUCKS

2000 Freightliner T/A Dump Truck, Cummins ISM, Automatic, Rubber Pad Suspension, 14' Dump Box w/ Tarp, 11' Snowplow, Force America Command All Controls, Monroe Slide-In Sander/ Spreader, 58,000 lb. GVWR, 40,000 lb. Rears, 18,000 lb. Front Axle, City Unit

2000 Kenworth T800B T/A Dump Truck, Cummins ISM, 10-Speed, Rubber Pad Suspension, 15' Dump Box w/ Tarp, 52,860 lb. GVWR, 40,000 lb. Rears, 12,860 lb. Front Axle

1997 Kenworth T800 T/A Dump Truck, Cummins 400 HP, 9-Speed, 8-Bag Air Ride, 16' Rock Box With Electric Tarp, High Liftgate, Front Aluminum Rims

1998 Kenworth T800B T/A Dump Truck, Caterpillar Diesel, 10-Speed, Hendrickson Rubber Pad Suspension, 16' Dump Box w/ Tarp, 54,600 lb. GVWR, 40,000 lb. Rears, 14,600 lb. Front Axle

1995 Peterbilt 379 T/A Dump Truck, Cummins Diesel, 8-Speed, 4-Bag Air Ride, 15' Rock Box With Electric Tarp

1994 Kenworth T800 T/A Dump Truck, Detroit Series 60, 9-Speed, 8-Bag Air Ride, 16' Rock Box With Electric Tarp

1993 Kenworth T800B T/A Dump Truck, Detroit Series 60, 9-Speed, 8-Bag Air Ride, 15' Dump Box With Manual Tarp

2006 GMC C8500 T/A Dump Truck, Duramax, Automatic, Hendrickson Spring Suspension, 10' Dump Box, Tarp, 52,350 lb. GVWR, 40,000 lb. Rears, 12,350 lb. Front Axle

2000 Ford F350 Super Duty XL 4x4 Landscaping Dump Truck, Power Stroke 7.3L V8, Automatic, 9' Dump Bed, Dually



2003 BOBCAT 337 MINI EXCAVATOR



2023 LAND HERO 12 MINI EXCAVATOR,
0 HOURS



MASSEY FERGUSON 40B TRACTOR/ LOADER



2000 FREIGHTLINER T/A DUMP TRUCK
W/ CUMMINS ISM, CITY UNIT



2011 DITCH WITCH SK650 MINI
SKID STEER LOADER, KUBOTA DIESEL



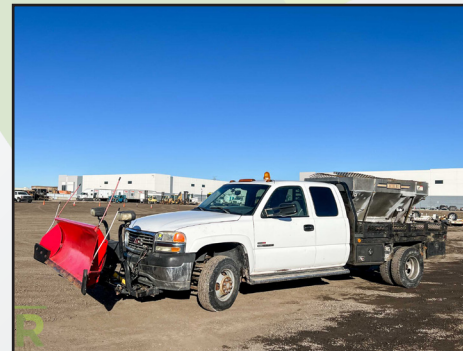
KENWORTH T600 T/A VACUUM TRUCK



2005 INTERNATIONAL 4400 S/A
DIGGER DERRICK TRUCK W/ TEREX BOOM



2000 GMC T6500 PAINT STRIPING
TRUCK, CITY UNIT



2002 GMC SIERRA 3500 4X4 FLATBED
TRUCK W/ SNOWPLOW



JOHN DEERE 318E SKID STEER LOADER

VACUUM TRUCKS

1996 Western Star T/A Vacuum Truck, Detroit Series 60, 18-Speed, 4-Bag Air Ride

1992 International Eagle 9300 T/A Vacuum Truck, Cummins 350 HP, 13-Speed, Hendrickson Spring Suspension

1992 International Eagle T/A Vacuum Truck, Cummins 14.0L, 13-Speed, Hendrickson Spring Suspension, 55,620 lb. GVWR

1989 International Eagle T/A Vacuum Truck, Caterpillar Diesel, 15-Speed, 4-Bag Air Ride

1987 Kenworth T600 T/A Vacuum Truck, Caterpillar 3406E, 10-Speed, 8-Bag Air Ride

BUCKET TRUCKS

2013 International 4300 S/A Bucket Truck, Maxxforce Diesel, Automatic, Spring Suspension, Terex TL-41 Boom, 41' Platform Height, 11' Utility Box

2012 Ford F650 S/A Bucket Truck, 41' Boom

DIGGER DERRICK TRUCK

2005 International 4400 S/A Digger Derrick Truck, 7.6L, Automatic, Spring Suspension, Terex Commander C4045 Boom, Front & Rear Hydraulic Stabilizers

COMPRESSOR TRUCK

2006 International 4400 S/A Compressor Truck, DT466, Automatic, Spring Suspension, 12' Utility Box, Hose Reels, Pintle Hitch, Rear Air Hookup

PAINT STRIPING TRUCK

2000 GMC T6500 S/A Paint Stripping Truck, Caterpillar 3126, Automatic, Linear Dynamics Bed, Mixing Tanks, Ingersoll Rand Air Compressor, Dual Steer, 25,950 lb. GVWR, City Unit

TRUCK TRACTORS

2002 International 2674 T/A Truck Tractor, 10.8L L6 Cummins, Automatic, Hendrickson Rubber Pad Suspension, 212" Wheel Base, Wet Kit, Aluminum Headache Rack

1986 Volvo T/A Truck Tractor, Cummins Diesel, 13-Speed, Reyco Suspension, 162" Wheel Base, Merritt Aluminum Headache Rack

2002 Mitsubishi FE640 S/A Crew Cab & Chassis, 4.9L, Automatic, 14,500 lb. GVWR

1999 GMC W4500 S/A Cab and Chassis, Isuzu Diesel, Automatic, 151" Wheel Base

VAN BODY TRUCK

2001 International 4700 S/A Van Body Truck, Automatic, 16' Box, Rollup Back Door

FLATBED TRUCKS

2015 Ford F550 XL 4X4 Flatbed Truck, 6.7L, Automatic, 11' Bed, Dually, Toolboxes

2013 International S/A Flatbed Truck

2012 Ford F550 XL Super Duty 4x4 Super Cab Flatbed Truck, 6.7L V8 Powerstroke B20, Automatic, 11' Bed, Dually

2005 Chevrolet C4500 S/A Flatbed Truck, 6.6L V8 Duramax, Automatic, 12.5' Bed

2002 GMC Sierra 3500 SL 4x4 Super Cab Flatbed Truck, Duramax 6.6L V8, Automatic, Hiniker 7 1/2' Snowplow w/ Wings, Lights & Controller, 8' Bed, Hiniker Sander / Spreader, Dually

2000 International 4700 S/A Flatbed Truck, 7.3L V8 T444E, 5-Speed, Spring Suspension, 12' Bed



1992 INTERNATIONAL EAGLE 9300
T/A VACUUM TRUCK



2006 INTERNATIONAL 4400 S/A COMPRESSOR
TRUCK W/ DT466



2001 INTERNATIONAL 4700 16'
VAN BODY TRUCK, DIESEL



CATERPILLAR IT28 INTEGRATED TOOL CARRIER



2014 FORD F350 4X4 UTILITY TRUCK
W/ AUTO CRANE



2020 CHEVROLET COLORADO ZR2 4X4
CREW CAB PICKUP



1995 UTILITY T/A 48' FLATBED TRAILER



NEW 40' STEEL STORAGE CONTAINER,
HIGH CUBE



2010 VERMEER RING-O-MATIC VACUUM
TRAILER, 369 HOURS, MUNICIPALITY UNIT



VIEW OF NEW GRAPPLE BUCKETS FOR
SKID STEER LOADERS

UTILITY TRUCKS, PICKUPS AND SUV'S

Great Selection of Utility Trucks, Pickups & SUV'S

LOWBOY TRAILER

1996 Trailboss T/A Lowboy Trailer, 46' Overall Length, 102" Wide, Air Ride Suspension, Hydraulic Fold Down Ramps

FLATBED TRAILER

1995 Utility T/A Flatbed Trailer, 48' x 96", Spring Suspension, 78,000 lb. GVWR

ASSORTED TRAILERS

Great Assortment of New Trailers!!

2008 Superior T/A Equipment Trailer, Duals, 8' x 22' Deck, 5' Dovetail, Fold Down Ramps, Pintle Hitch

2000 Felling T/A Equipment Trailer, Duals, 22' x 102" Deck, 5' Dovetail, Fold-Down Ramps, Air Brakes, Pintle Hitch

1999 RCM T/A Equipment Trailer, Duals, 8' x 19' Deck, 5' Dovetail, Fold-Down Ramps, Pintle Hitch

2019 Lamar T/A Equipment Trailer, 7' x 16' Deck, 4' Dovetail, Fold Down Ramps, 14,000 lb. GVWR

{3} 2014 Maxey T/A Tilt Bed Equipment Trailers, 16' x 82" Deck, 13,350 lb. GVWR

1999 Zieman T/A Gooseneck Equipment Trailer, 14' x 75" Deck, Auto-Crane Lift Mixing Tank, Kohler Propane Powered Engine, City Unit

1989 Taylor Pole Trailer, Air Brakes, Pintle Hitch, Extendable

VAN TRAILERS AND STORAGE CONTAINERS

1984 Trailmobile T/A Van Trailer, 48' x 102" Spring Suspension, Setup For Offices, Lighting, Electrical, Cabinets, Stairs, Swing Open Back Doors, Side Door, 65,000 lb. GVWR

2022 Utility T/A Reefer Trailer, 36' x 102", Carrier Reefer Unit, Spring Suspension, Swing Open Back Doors, {2} Side Doors, 65,000 lb. GVWR

New 40' Steel Storage Container, High Cube, {4} Side Door Openings

New 8' and 9' Steel Storage Containers, Side Door and Window

VACUUM TRAILER

2010 Vermeer Ring-O-Matic T/A Vacuum Trailer, Vanguard 31 HP Gas Engine, Pintle Hitch, Hours: 369, Municipality Unit

TOWABLE EQUIPMENT

Towable Message Boards

Water Trailers

Arrow Boards

Towable Crack Filling Machines

GENERATOR

Wacker G-50 S/A Towable Generator, 50 KVA, John Deere Diesel

MESCELLANEOUS

Over {300} New Skid Steer Attachments

New Skid Steer Tires

New Iron Gate Sets

New Metal Work Tables

Bunks of Wood Timbers

Much Much More!



1999 WINNEBAGO BRAVE COMMAND CENTER
VEHICLE, GAS ENGINE, CITY UNIT



1999 ZIEMAN T/A GOOSENECK EQUIPMENT
TRAILER, CITY UNIT



TRAILMOBILE T/A VAN TRAILER, 48' X 102",
SETUP FOR OFFICES



WACKER 50 KVA TOWABLE DIESEL GENERATOR



VIEW OF NEW SKID STEER TIRES

AUCTION INFORMATION

DATE: Wednesday March 15th, 2023

ADDRESS: 7500 York Street, Denver, CO 80229

DIRECTIONS: Southbound I-25: Take the 84th Ave. Exit, #219, go east to Washington Ave., then south to 78th Ave., then east to York . then south on York approx. 3 blocks. Northbound I-25: Take the I-76 Exit #216A, then veer left onto the 70th Ave. Exit #216B, then east on 70th Ave. approx. 1.3 miles to York, then 2 blocks north. Westbound on I-270: Take the York St. Exit #1, then proceed north approx. 1 mile. Eastbound on I-76: Take the 74th Ave Exit #8, then go back west approx. 1 mile to York St., then 2 blocks north. Watch for auction signs.

INSPECTION: March 13th & 14th from 8:15am to 4:45pm. Auction location is 7500 York St., Denver, CO 80229.

BUYERS' PREMIUM: All purchases will be assessed a 13% Buyer's Premium. This will be added to the purchase price and is subject to all applicable sales taxes. {3% discount is available - see payment terms}.

PAYMENT TERMS: Full payment required by 4:45pm on Monday, March 20th, in cash, certified funds, bank wire transfer, checks approved by Telecheck or accompanied by bank letter, Visa, MasterCard or Discover. If paying in full in cash, cashier check, bank wire transfer or check with a letter of guarantee, a 3% reduction off of the stated buyers' premium is given.

Due to the Coronavirus and the goal to reduce interactions and maintain social distancing. Our Payment terms will be modified going forward as we attempt to have all electronic payments.

- Payments under \$1000 will be automatically charged to the credit card on file, immediately following the auction.
- Payments over \$1000 can be made by bank wire transfer and cash deposits made directly into our account at a Chase Bank.
- Cashier Checks will be accepted in our office, at this time we are not accepting cash in the office
- Payments in bank wire transfer and those directly deposited into our account will receive a 3% reduction off the buyer's premium.

REMOVAL: All purchases must be removed at buyers' expense and responsibility by 4:45 p.m. on Friday, March 24th, 2023. Hours are 8:15am-4:45pm on weekdays. No removal on the weekend. Removal must be scheduled by appointment only through Our Scheduling System. You will receive a link to this in your invoice after the auction.

TWO UPCOMING INTERNET AUCTIONS:

Selling for Weld County LIQUEFIED NATURAL GAS (LNG) MOBILE FUELING SYSTEM TRAILER & TRUCK TRACTORS

May 10th, 2023
Greeley, Colorado

MOBILE FUELING TRAILER

InoxCVA Automated LNG Mobile Fueling System, Mod. 6K-175-LNG-ELEC-MDT, 6000 Gallon Capacity, Onboard Generator and Compressor, Shore Power Connections, Local Technical Support Is Provided By Stabilis Energy

TRUCK TRACTORS

{8} Kenworth T800 Truck Tractors, Year 2009-2014, Powered By Dual Fuel, (LNG/Diesel, Westport Conversion Fuel Systems w/ Either Paccar or Cummins 15 Liter Engines

2014 Peterbilt 367 Truck Tractor, Powered By Dual Fuel, (LNG/Diesel, Westport Conversion Fuel Systems w/ Cummins 15 Liter Engine

Odometer Readings Range From 124K to 400K Miles



Surplus Assets to the Continuing Operations of PREMIER EARTHWORKS

Late April, 2023
Parker, Colorado

Featuring Wheel Loaders, Excavators, Skid Steers, Tractors, Gators, Trailers, Storage Containers, and Contracting Equipment



Don't Miss Out!

Extremely Nice
Equipment!



Contact Steve @ 303-289-1600 x 104 if you have quality construction equipment you want to get into our May auction!