

Roller AUCTION

7500 York Street
Denver, CO 80229



2012 FREIGHTLINER DUMP TRUCK W/ DETROIT DD13,
COUNTY UNIT

WHAT

An auction of heavy construction equipment from companies, local contractors & government entities

WHEN

Wednesday, May 10th @ 9:00am
Inspection: May 8th & 9th
from 8:15am - 4:45pm

WHERE

7500 York Street, Denver, CO 80229

PRESORTED
FIRST CLASS MAIL
U.S. POSTAGE
PAID
DENVER CO
PERMIT # 4033

INTERNET AUCTION



CONSTRUCTION & CONTRACTING EQUIPMENT

WEDNESDAY • May 10th • 9:00 A.M.

Inspection: May 8th & 9th from 8:15 a.m. to 4:45 p.m.



2002 INTERNATIONAL 4900 FIRE TRUCK W/ 6798
MILES, CITY UNIT



2010 JOHN DEERE 310SJ 4WD LOADER/ BACKHOE,
EXTENDAHOE

SELLING FOR

Arapahoe County
City of Northglenn
City of Aurora
City of Greeley
Park County
Jefferson County
City of Broomfield
Xcel Energy

AUCTION INCLUDING:
Street Sweepers, Wheel Loaders,
Loader/Backhoes,
Hydraulic Excavators, Skid Steer
Loaders, Fire Truck, Vibratory
Rollers, Trash Truck, Forklifts,
Dump Trucks, Lowboy Trailers,
Utility Trucks, Flatbed Trucks,
Cars, Pickups, Trenchers,
Hydraulic Tail Trailer,
Equipment Trailers,
Storage Containers, Generators,
Light Towers, Wood Timbers,
New Skid Steer Attachments
Much More!

Construction & Contracting Equipment



2001 CATERPILLAR 938G
WHEEL LOADER W/ 3655 HOURS, CITY UNIT

7500 York Street • Denver, Colorado 80229
WEDNESDAY • May 10th • 9:00 A.M.
Inspection: May 8th & 9th from 8:15 a.m. to 4:45 p.m.
Internet Only Auction • Bidding Available at:
www.RollerAuction.com/construction



(3) 2018 ELGIN EAGLE STREET SWEEPERS
2017 ELGIN EAGLE STREET SWEEPER, CITY UNITS

Roller & Associates, Inc.

7500 York Street • Denver, Colorado 80229 • (303) 289-1600 • www.rollerauction.com

Roller & Associates, Inc.

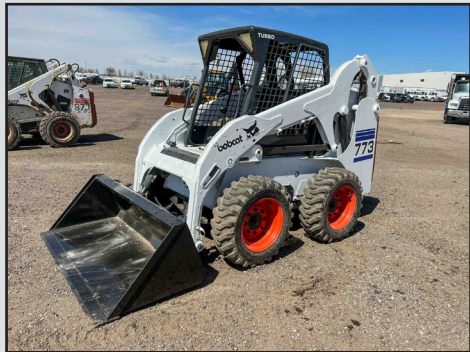
7500 York Street • Denver, Colorado 80229 • (303) 289-1600 • www.rollerauction.com



2018 ELGIN EAGLE STREET SWEEPER,
(1 OF 3), CITY UNIT



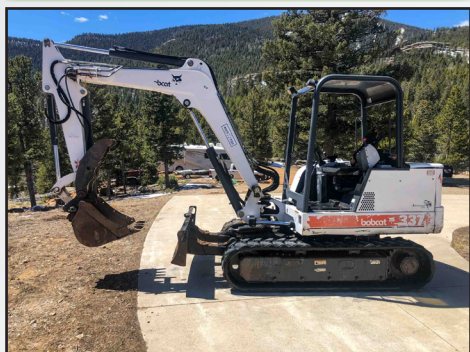
2003 JOHN DEERE 310SG 4WD
LOADER/ BACKHOE, EXTENDAHOE



BOBCAT 773 SKID STEER LOADER



KUBOTA KX91-3S2 MINI EXCAVATOR



BOBCAT 337 MINI EXCAVATOR

STREET SWEEPERS

2018 Elgin Eagle Street Sweeper, 6.7L L6, Cummins Front Engine, Cummins Rear Engine, , Mounted On Freightliner Chassis, Series 4MF, S/N: 4MF11003, Dual Steer, Dual Gutter Brooms, Backup Camera , 15,194 Miles, 2708 Front Engine Hours, 2684 Rear Engine Hours, City Unit

2018 Elgin Eagle Street Sweeper, 6.7L L6 Cummins Front Engine, Cummins Rear Engine, , Mounted On Freightliner Chassis, Series 4MF, S/N: 4MF11001, Dual Steer, Dual Gutter Brooms, Backup Camera , 23,909 Miles, 4028 Front Engine Hours, 3988 Rear Engine Hours, City Unit

2018 Elgin Eagle Street Sweeper, 6.7L L6 Cummins Front Engine, Cummins Rear Engine, , Mounted On Freightliner Chassis, Series 4MF, S/N: 4MF11002, Dual Steer, Dual Gutter Brooms, Backup Camera , 15,643 Miles, 3023 Front Engine Hours, 2977 Rear Engine Hours, City Unit

2017 Elgin Eagle Street Sweeper, 6.7L L6, Cummins Front Engine, Cummins Rear Engine, , Mounted On Freightliner Chassis, Series 4MF, S/N: 4MF10838, Dual Steer, Dual Gutter Brooms, Backup Camera , 18,278 Miles, 3130 Front Engine Hours, 3108 Rear Engine Hours, City Unit

WHEEL LOADER

2001 Caterpillar 938G Wheel Loader, Cab w/ Heat & A/C, Front Quick Coupler, Hour Meter Reads; 3655, S/N: CAT0938GK4YS02322, City Unit

LOADER/ BACKHOES

2010 John Deere 310SJ 4WD Loader/Backhoe, Extendahoe, Auxiliary Hydraulics, EROPS, Heat & A/C, Hour Meter Reads: 4428, S/N: 1T0310SJLA0190602

2003 John Deere 310SG 4WD Loader/Backhoe, Extendahoe, Auxiliary Hydraulics, EROPS, 24" Hoe Bucket, Hour Meter Reads: 7169, S/N: T0310SG911603

2002 John Deere 310SG 4WD Loader/Backhoe, Extendahoe, Auxiliary Hydraulics, EROPS, 17" Hoe Bucket, Hour Meter Reads: 1966, S/N: T0310SG906519

1998 Caterpillar 446B 4WD Loader/Backhoe, Turbo, EROPS, 24" Hoe Bucket With Thumb, Hour Meter Reads: 6573, S/N: 5BL01869, City Unit

Unimog UD03KA 4WD Loader/Backhoe, Mercedes Diesel, Manual Transmission, On Freightliner Chassis, 1210 Miles, S/N: 1FG999992HM450123

HYDRAULIC EXCAVATOR

Hitachi ZX350LC-3 Hydraulic Excavator, 32" TBG, 48" Bucket, Hour Meter Reads: 1,229, S/N: FF01V7Q050236

MINI EXCAVATORS

Bobcat 337 Mini Excavator, ROPS, Rubber Tracks, Bucket w/ Thumb, Auxiliary Hydraulics

Kubota KX91-3S2 Mini Excavator, 12" Rubber Tracks, 24" Bucket, Auxiliary Hydraulics, ROPS, S/N: 43424

(5) New 2023 Agrotk QH12 Mini Excavators, Gas Engine, 7" Rubber Tracks, 37" Backfill Blade, 16" Bucket w/ Thumb

(2) New 2023 Agrotk H12 Mini Excavators, Gas Engine, 7" Rubber Tracks, 37" Backfill Blade, 16" Bucket w/ Thumb

(2) New 2023 Agrotk L12 Mini Excavators, Gas Engine, 7" Rubber Tracks, 37" Backfill Blade, 16" Bucket w/ Thumb



CATERPILLAR 446B 4WD
LOADER/ BACKHOE, CITY UNIT



UNIMOG UD03KA 4WD LOADER/ BACKHOE
ON FREIGHTLINER CHASSIS



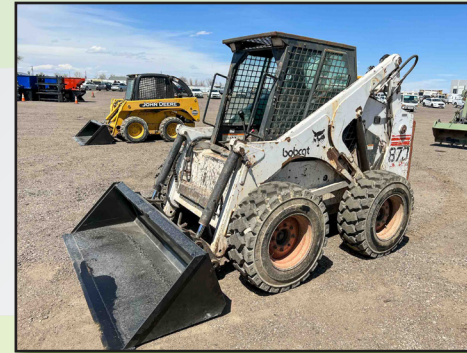
2012 BOBCAT S850 SKID STEER LOADER
W/ 2597 HOURS, COUNTY UNIT



HITACHI ZX350LC-3 HYDRAULIC EXCAVATOR



2023 AGROTK H12 MINI EXCAVATOR, (1 OF 9)



BOBCAT 873 SKID STEER LOADER



VERMEER V-3550A RIDE-ON TRENCHER
W/ 2379 HOURS



2002 JOHN DEERE 310SG 4WD
LOADER/ BACKHOE, EXTENDAHOE



2013 HAMM GRW280i-25 PNEUMATIC ROLLER,
COUNTY UNIT



2018 MACK LR613 TRASH TRUCK
W/ DADEE SCORPION LOADER, CITY UNIT

SKID STEER LOADERS

2012 Bobcat S850 Skid Steer Loader, Enclosed Cab w/ Heat & A/C, 2-Speed, Ride Control, Auxiliary & High Flow Hydraulics, 72" Bucket, Solid Tires, Backup Camera, Hour Meter Reads: 2597, S/N: ATF411620, County Unit

2011 John Deere 318D Skid Steer Loader, Enclosed Cab w/ Heat & A/C, Auxiliary Hydraulics, 66" Tooth Bucket, Hour Meter Reads: 3060, S/N: 1T0318DAHB0199721

1998 Bobcat 873 Skid Steer Loader, Auxiliary Hydraulics, 78" Bucket, Hour Meter Reads: 2672, S/N: 514116584

Bobcat 873 Skid Steer Loader, Enclosed Cab, Auxiliary Hydraulics

2000 Bobcat 773 Skid Steer Loader, Auxiliary Hydraulics, 66" Bucket, Hour Meter Reads: 4039, S/N: 517614070

John Deere 240 Skid Steer Loader, Series II, Auxiliary & High Flow Hydraulics, Enclosed Cab, 66" Bucket

TRENCHERS

Vermeer V-3550A Ride-On Trencher, Backhoe Attachment, 54" Backfill Blade, Crumber, Hour Meter Reads: 2282, S/N: 1VR5072P5X1000916

Vermeer V-3550 Ride-On Trencher, 54" Backfill Blade, Crumber, Front Counterweights, Hour Meter Reads: 2379, S/N: 1VRF072U1T1000591

RIDE-ON BROOMS

2012 Broce RCT-350 Ride-On Broom, Enclosed Cab, 8' Broom, Cummins 4-Cylinder Diesel, Hour Meter Reads: 2377, S/N: 407901, County Unit

Broce RCT-350 Ride-On Broom, Cummins Diesel, Enclosed Cab, 8' Sweeper, 7 1/2' Front Snow Plow, Hour Meter Reads: 3215, S/N: 405724, City Unit

COMPACTION EQUIPMENT

2013 Hamm GRW280i-25 Ride-On Pneumatic Roller, 8-Wheel, Canopy, Hour Meter Reads: 3205, S/N: H2120022, County Unit

1998 Ingersoll Rand DD-32 Ride-On Vibratory Roller, 51" Double Drums, Cleaning Pads, Spray Bars, Deutz Diesel, Hour Meter Reads: 1247, S/N: 153336

Wacker Ride-On Roller, 35" Double Drums, Gas Engine

ALL TERRAIN CRANE

Pettibone Mod. 30 All Terrain Crane, 15-Ton Capacity, Cummins Diesel, 3-Stage Boom, Hydraulic Outriggers

REACH FORKLIFT

JCB Mod. 520 Telescopic Forklift, 4WD, 4,400 lb Capacity, Perkins Diesel, Hour Meter Reads: 1410, S/N: 1048893

TRASH TRUCK

2018 Mack LR613 RWD T/A Side Load Trash Truck, , Automatic, DaDee Scorpion Side Load System, Dual Steer, Automatic, 68,000 Miles, City Unit

FIRE TRUCK

2002 International 4900 S/A Fire Truck, 530 Power, Automatic, Complete With Pump And Hose, MC 2000 Gallon Stainless Steel Tank, 6,798 Miles, 1231 Engine Hours, City Unit



JOHN DEERE 240 SKID STEER LOADER



2012 BROCE RCT-350 RIDE-ON BROOM
W/ SNOWPLOW, CITY UNIT



WACKER RIDE-ON ROLLER, GAS



INGERSOLL RAND DD-32 RIDE-ON
VIBRATORY ROLLER



JCB MOD. 520 TELESCOPIC FORKLIFT



2007 MACK GRANITE CV713 DUMP TRUCK,
COUNTY UNIT



1999 CHEVROLET C6500 S/A
DUMP TRUCK W/ CATERPILLAR 3126



2006 MACK GRANITE CV713
SPRAY TRUCK, COUNTY UNIT



2005 FORD F350 KING RANCH 4WD
CREW CAB FLATBED TRUCK



TRAIL KING TK70HT-482 HYDRAULIC
TAIL TRAILER, COUNTY UNIT

DUMP TRUCKS

2012 Freightliner 114SD T/A Dump Truck, 12.8L L6 Detroit DD13, 18-Speed, Tuf-Trac Suspension, 16' Material Box With Electric Tarp, Pintle Hitch, Rear Air Hookup, County Unit

2007 Mack Granite CV713 T/A Dump Truck, Mack Diesel, Automatic, Spring Suspension, Viking Pro-Line II Live Bottom 14' Box w/ Tarp, 11' Snow Plow, County Unit

(3) 2007 Oshkosh MPT-1823 S/A 4WD Dump Trucks, Cummins Diesel, Automatic, Spring Suspension, 10' Dump Box, Tarp, Monroe 12' Snow Plow, Force America Command All Controls, Tailgate Sander/ Spreader, County Units

2004 International 7400 S/A 4WD Dump Truck, DT530, Automatic, Spring Suspension, 10' Dump Box w/ Tarp, Monroe 12' Snow Plow, County Unit

1992 International 4800 S/A 4WD Dump Truck, DT466, 10-Speed, Spring Suspension, 10' Dump Box w Tarp, Wausau 11' Snow Plow, County Unit

1999 Chevrolet C6500 S/A Dump Truck, Caterpillar 3126, 5+2 Speed, Spring Suspension, 10' Dump Box, Monroe 10' Snow Plow, 25,950 lb. GVWR

1995 Freightliner FL70 S/A Dump Truck, Cummins Diesel, 6-Speed, Spring Suspension, 10' Dump Box

SPRAY TRUCK

2006 Mack Granite CV713 T/A Spray Truck, Mack Diesel, Automatic, Spring Suspension, 3200 Gallon Poly Tank w/ Spray Bar, In-Cab Controls, County Unit

PICKUPS AND UTILITY TRUCKS

Great Selection Of Pickups and Utility Trucks: Including:

2007 Ford F-450 XL Super Duty 4x4 Cab & Chassis, Crew Cab, Power Stroke 6.0L V8 Turbo Diesel, Automatic

2005 Ford F550 XL Super Duty Cab Chassis, Power Stroke 6.0L V8 Turbo Diesel, Automatic

2005 Ford F350 XL Super Duty 4x4 Utility Truck, Triton 6.8L V10, Automatic, 8' Utility Box

CRANE TRUCK

2012 International Workstar 7600 T/A Crane Truck, Maxxforce Diesel, 9-Speed, Hendrickson Rubber Pad Suspension, Palfinger Mod. PK4502 Knuckleboom Crane, Front Hydraulic Stabilizers

FLATBED TRUCKS

2005 Ford F350 Lariat Super Duty 4x4 Crew Cab Flatbed Truck, Power Stroke V8 Turbo Diesel, Automatic, King Ranch, 11.5' Bed, Dually

VAN BODY TRUCKS

2003 Isuzu NPR S/A Van Body Truck, Turbo Intercooled Diesel, Automatic, 18' Box With Carrier Reefer Unit, Swing Open Back Doors

1996 International 4900 S/A Van Body Truck, DT466E, Automatic, Hackney 20' Box With Thermo King Reefer Unit, Side Door, Swing Open Back Doors

CARS

2015 Nissan Altima S FWD, 2.5L I4, Automatic

2008 Dodge Magnum SXT RWD Wagon, 3.5L V6, Automatic

HYAULIC TAIL TRAILER

1993 Trail King TK70HT-482 T/A Hydraulic Tail Trailer, 48' x 102", Air Ride Suspension, 85,740 lb. GVWR, Koenig Winch, County Unit



2007 OSHKOSH S/A 4WD DUMP TRUCK,
[1 OF 3] COUNTY UNIT



INTERNATIONAL 4800 4WD
DUMP TRUCK, COUNTY UNIT



2012 INTERNATIONAL WORKSTAR 7600
CRANE TRUCK W/ PALFINGER



2003 ISUZU NPR S/A 18 FT. VAN BODY TRUCK



2015 NISSAN ALTIMA S



CARRIER KING T/A LOWBOY TRAILER
W/ HYDRAULIC FOLD DOWN RAMP



T/A GOOSENECK TRAILER
W/ REFRIGERATED BOX



VACAVATOR VT VACUUM TRAILER,
DIESEL ENGINE



2012 MAGNUM 20KW TOWABLE
GENERATOR W/ LIGHT TOWER



PRECISION TOWABLE MESSAGE BOARD

LOWBOY TRAILER

1974 Carrier King T/A Lowboy Trailer, 24' Lower Deck, 8' Upper Deck, 6' Hydraulic Fold Down Ramp, Spring Suspension

TOY HAULER CAMPER

2012 Forest River Ultra Work and Play T/A Toy Hauler Camper, 29' Length, Trim Level: WPT25UDT

EQUIPMENT TRAILERS

Great Selection Of Equipment Trailers: Including:

2016 Maxey T/A Tilt Bed Equipment Trailer, 82" x 16', Pintle Hitch

2006 Innovative T/A Hydraulic Dump Trailer, 81" x 12', Ball Hitch

2000 TFI T/A Gooseneck Equipment Trailer, With Refrigerated Box, Powermate 6500 Watt Generator

2005 Trail King TK12-2000 T/A Equipment Trailer, 4' Dovetail, Fold-Down Ramps, Pintle Hitch

STEEL STORAGE CONTAINERS AND VAN TRAILERS

(7) New 40' Steel Storage Containers, High Cube, (4) Side Door Openings

(2) 40' Steel Storage Containers, High Cube

(6) T/A Van Trailers, 45' x 96"

VACUUM TRAILER

Vacavator VT Series Vacuum Trailer Mounted T/A Trailer, Pintle Hitch, Complete with Diesel Engine, Pump, Hoses, Tanks

GENERATORS AND AIR COMPRESSORS

Ingersoll Rand C150D2RE Skid Mounted Generator, 150KW, Cummins Diesel, Hours: 955 S/N: A180298482

2012 Magnum 20KW Towable Generator, Isuzu 4-Cylinder Diesel, With Light Tower, Pintle Hitch, Hour Meter Reads: 5399, S/N: 5AJLS1411CB221163

(2) Sullair TS20 Skid Mounted Electric Air Compressors

OVER (300) NEW SKID STEER ATTACHMENTS

New Hydraulic Posthole Digging Attachments To Fit Skid Steer Loader with 12" and 18" Auger Bits

New 76" Hydraulic Skeleton Grapple Buckets to Fit Skid Steer Loader, Single Cylinder

New Kivel 48" Fork Attachments To Fit Skid Steer Loader

New Hydraulic Grader Attachments To Fit Skid Steer Loader

New Hydraulic Tree Pulling Attachments To Fit Skid Steer Loader

New Hydraulic Dozer Blades To Fit Skid Steer Loader

New Hydraulic 72" Brush Cutting Attachments To Fit Skid Steer Loader

New Skid Steer Buckets & Rock Buckets, Various Sizes

New 72" Hydraulic Rototiller Attachments To Fit Skid Steer Loader

New Hydraulic Cement Mixer Attachments To Fit Skid Steer Loader

New Hydraulic Breaker Attachments To Fit Skid Steer Loader

New Landscaping & Root Rakes To Fit Skid Steer Loader

New 72" Hydraulic Vibratory Roller Attachments To



2012 FOREST RIVER ULTRA
WORK AND PLAY 29' TOY HAULER



NEW 40' STEEL STORAGE CONTAINER,
HIGH CUBE, [1 OF 7]



INGERSOLL RAND 150KW DIESEL
GENERATOR W/ CUMMINS, 955 HOURS



T/A VAN TRAILER, [1 OF 6]



JOHN DEERE GATOR, DIESEL



2018 MAXEY T/A TILT DECK TRAILER



WROUGHT IRON GATES



VIEW OF SKID STEER TIRES



VIEW OF POSTHOLE DIGGING ATTACHMENTS FOR SKID STEERS



NEW STEELMAN TOOLBOXES

NEW SKID STEER ATTACHMENTS continued

Fit Skid Steer Loader

New Hydraulic 72" Box Broom/ Sweeper Attachments To Fit Skid Steer Loader

New Hydraulic 72' Hydraulic Angle Broom Attachments To Fit Skid Steer Loader

New Hydraulic Trencher Attachments To Fit Skid Steer Loader

NEW TIRES

(5) Sets of (4) New Forerunner 12-16.5 Skid Steer Tires w/ Wheels

(4) Sets of (4) New Forerunner 10-16.5 Skid Steer Tires with Wheels

(5) Sets of (4) New Forerunner 12-16.5 Skid Steer Tires

(5) Sets of (4) New Forerunner 10-16.5 Skid Steer Tires

(9) New Sets Of Radial Trailer Tires

MISCELLANEOUS

John Deere Gator, Diesel, Hour Meter Reads: 5648

Precision Solar Towable Message Board, Solar Powered With Batteries

Pro-Tech 14' Snow Pusher to Fit Wheel Loader

(4) Buyers SaltDogg Stainless Steel Slide-In Sander Spreaders

Snow-Wolf 14' Snow Pusher to Fit Wheel Loader

Imac MG-3-Ice Buster Attachment, Fits Caterpillar 140G Motor Grader, County Unit

(12) New 20' Bi-Parting Wrought Iron Gate Sets

New 2022 Gold Mountain Storage Shelters

New Bastone Portable Toilets w/ Showers

(15) New 27" x 90" Metal Work Tables

New Steelman 10' 30-Drawer Toolboxes

New Fork Extensions

Bunks Of Wood Timbers, Various Sizes

New Chain/ Binder Sets

New Steelman Anvils

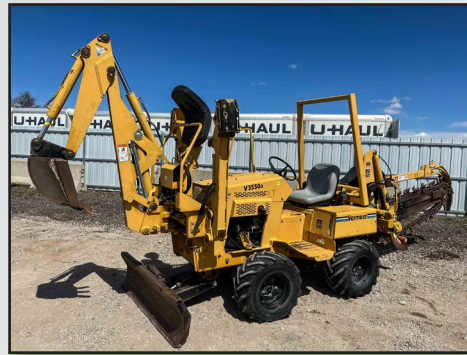
New Plate Compactors and Jumping Jacks

New PVC 28" Orange Traffic Cones

Additional Equipment
Will Be Added To The
Auction!



VIEW OF SKID STEER BUCKETS



VERMEER V-3550A RIDE-ON TRENCHER
W/ BACKHOE, 2282 HOURS



VIEW OF FORK ATTACHMENTS FOR
SKID STEERS



VIEW OF BRUSH MOWERS FOR SKID STEERS



VIEW OF WOOD TIMBERS



NEW BASTONE PORTABLE TOILETS

AUCTION INFORMATION

DATE: Wednesday May 10th, 2023

ADDRESS: 7500 York Street, Denver, CO 80229

DIRECTIONS: Southbound I-25: Take the 84th Ave. Exit, #219, go east to Washington Ave., then south to 78th Ave., then east to York . then south on York approx. 3 blocks. Northbound I-25: Take the I-76 Exit #216A, then veer left onto the 70th Ave. Exit #216B, then east on 70th Ave. approx. 1.3 miles to York, then 2 blocks north. Westbound on I-270: Take the York St. Exit #1, then proceed north approx. 1 mile. Eastbound on I-76: Take the 74th Ave Exit #8, then go back west approx. 1 mile to York St., then 2 blocks north. Watch for auction signs.

INSPECTION: May 8th & 9th from 8:15am to 4:45pm. Auction location is 7500 York St., Denver, CO 80229.

BUYERS' PREMIUM: All purchases will be assessed a 13% Buyer's Premium. This will be added to the purchase price and is subject to all applicable sales taxes. (3% discount is available - see payment terms).

PAYMENT TERMS: Full payment required by 4:45pm on Monday, May 15th, in cash, certified funds, bank wire transfer, checks approved by Telecheck or accompanied by bank letter, Visa, MasterCard or Discover. If paying in full in cash, cashier check, bank wire transfer or check with a letter of guarantee, a 3% reduction off of the stated buyers' premium is given.

Due to the Coronavirus and the goal to reduce interactions and maintain social distancing. Our Payment terms will be modified going forward as we attempt to have all electronic payments.

- Payments under \$1000 will be automatically charged to the credit card on file, immediately following the auction.
- Payments over \$1000 can be made by bank wire transfer and cash deposits made directly into our account at a Chase Bank.
- Cashier Checks will be accepted in our office, at this time we are not accepting cash in the office
- Payments in bank wire transfer and those directly deposited into our account will receive a 3% reduction off the buyer's premium.

REMOVAL: All purchases must be removed at buyers' expense and responsibility by 4:45 p.m. on Friday, May 19th, 2023. Hours are 8:15am-4:45pm on weekdays. No removal on the weekend. Removal must be scheduled by appointment only through Our Scheduling System. You will receive a link to this in your invoice after the auction.

TWO UPCOMING INTERNET AUCTIONS:

Selling for Weld County
**LIQUEFIED NATURAL GAS (LNG) MOBILE
FUELING SYSTEM TRAILER & TRUCK TRACTORS**

May, 2023
Greeley, Colorado

MOBILE FUELING TRAILER

InoxCVA Automated LNG Mobile Fueling System, Mod. 6K-175-
LNG-ELEC-MDT, 6000 Gallon Capacity, Onboard Generator and
Compressor, Shore Power Connections, Local Technical Support Is
Provided By Stabilis Energy

TRUCK TRACTORS

(8) Kenworth T800 Truck Tractors, Year 2009-2014, Powered By
Dual Fuel, (LNG/Diesel, Westport Conversion Fuel Systems w/ Either
Paccar or Cummins 15 Liter Engines

2014 Peterbilt 367 Truck Tractor, Powered By Dual Fuel, (LNG/Diesel,
Westport Conversion Fuel Systems w/ Cummins 15 Liter Engine

Odometer Readings Range From 124K to 400K Miles



Surplus Assets to the Continuing Operations of
PREMIER EARTHWORKS

Late May, 2023
Parker, Colorado

Featuring Wheel Loaders, Sheepsfoot Roller, Skid Steers, Tractors,
Gators, Trailers, Storage Containers, and Contracting Equipment



Don't Miss Out!
Extremely Nice
Equipment!



Contact Steve @ 303-289-1600 x 104 if you have quality construction
equipment you want to get into our July auction!