

# Roller AUCTION

7500 York Street  
Denver, CO 80229



2000 KENWORTH T800B T/A DUMP TRUCK W/ 68K MILES, MUNICIPALITY UNIT

#### WHAT

An auction of heavy construction equipment from companies, local contractors & government entities

#### WHEN

Wednesday, July 12th @ 9:00am  
Inspection: July 10th & 11th  
from 8:15am - 4:45pm

#### WHERE

7500 York Street, Denver, CO 80229

PRESORTED  
FIRST CLASS MAIL  
U.S. POSTAGE  
PAID  
DENVER CO  
PERMIT # 4033

## INTERNET AUCTION



## CONSTRUCTION & CONTRACTING EQUIPMENT

**WEDNESDAY • July 12th • 9:00 A.M.**

Inspection: July 10th & 11th from 8:15 a.m. to 4:45 p.m.



2006 POLAR T/A STAINLESS STEEL WATER TANKER TRAILER, COUNTY UNIT



2005 KENWORTH W900 T/A READY MIX TRUCK W/ KIMBLE K-2000

#### SELLING FOR

Jefferson County  
Douglas County  
City of Aurora  
City of Englewood  
Larimer County  
Metro Water Recovery  
Town of Georgetown  
Weld County  
Denver Water  
City of Broomfield  
Xcel Energy

#### AUCTION INCLUDING:

Street Sweepers, Wheel Loaders,  
Loader/Backhoes,  
Hydraulic Excavators, Skid Steer  
Loaders, Fire Truck, Vibratory  
Rollers, Forklifts, Truck Crane,  
Ready Mix Trucks, Bucket Trucks,  
Dump Trucks, Truck Tractors,  
Lowboy Trailers, Utility Trucks,  
Pickups, Trenchers,  
Water Tanker Trailers,  
Hydraulic Tail Trailer, Tractors  
Equipment Trailers,  
Storage Containers, Generators,  
New Skid Steer Attachments  
Much More!

Roller & Associates, Inc.

7500 York Street • Denver, Colorado 80229 • (303) 289-1600 • [www.rollerauction.com](http://www.rollerauction.com)

## Construction & Contracting Equipment



**2008 CATERPILLAR 930H  
WHEEL LOADER W/ QUICK COUPLER**

7500 York Street • Denver, Colorado 80229

**WEDNESDAY • July 12th • 9:00 A.M.**

Inspection: July 10th & 11th from 8:15 a.m. to 4:45 p.m.

Internet Only Auction • Bidding Available at:

[www.RollerAuction.com/construction](http://www.RollerAuction.com/construction)



**2008 CATERPILLAR 420E 4WD LOADER/BACKHOE, CITY UNIT**

Roller & Associates, Inc.

7500 York Street • Denver, Colorado 80229 • (303) 289-1600 • [www.rollerauction.com](http://www.rollerauction.com)

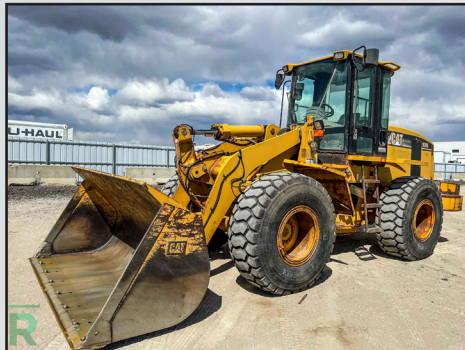




2005 JOHN DEERE 200CLC HYDRAULIC EXCAVATOR W/ THUMB



2005 VOLVO ECR88 HYDRAULIC EXCAVATOR W/ THUMB



2001 CATERPILLAR 938G WHEEL LOADER, CITY UNIT



1998 CATERPILLAR 436C 4WD LOADER/ BACKHOE



2020 KUBOTA SVL95 CRAWLER SKID STEER LOADER W/ 740 HOURS

## HYDRAULIC EXCAVATORS

2005 John Deere 200CLC Hydraulic Excavator, 28" TBG, 34" Bucket w/ Thumb, Cab w/ Heat & A/C, Hour Meter Reads: 10,388, S/N: FF200CX506773

2003 Case CX130 Hydraulic Excavator, Hour Meter Reads: 10,078, S/N: DAC0713192

2005 Kobelco 70SR-11 Hydraulic Excavator, 24" TBG, 98" Backfill Blade, 18" Bucket With Thumb, Cab With Heat & A/C, Hour Meter Reads: 2860, S/N: YT0407571

2005 Volvo ECR88 Hydraulic Excavator, 24" TBG, 90" Backfill Blade, 24" Bucket With Thumb, Cab With Heat & A/C, Hour Meter Reads: 4698, S/N: ECR88Y10312

2008 Bobcat 442 Mini Excavator, 17" Rubber Tracks, Enclosed Cab, Auxiliary Hydraulics, Thumb Attachment, S/N: 528911651, City Unit

[13] New 2023 AGT QH12 Mini Excavators, Briggs & Stratton Gas Engine, 7" Rubber Tracks, 38" Backfill Blade, 16" Bucket with Thumb

New 2023 Land Hero 12 Mini Excavator, 7" Rubber Tracks, 36" Backfill Blade, 16" Bucket

## WHEEL LOADERS

2008 Caterpillar 930H Wheel Loader, Quick Coupler, Bucket and Forks, Cab with Heat and A/C, Hour Meter Reads: 10,663, S/N: CAT0930HCDHC01035

2001 Caterpillar 938G Wheel Loader, Quick Coupler, Cab with Heat and A/C, City Unit, Hour Meter Reads: 3655, S/N: CAT0938GK4YS023322

## LOADER/ BACKHOES

2008 Caterpillar 420E 4WD Loader/Backhoe, Extendahoe, EROPS, 30" Hoe Bucket, City Unit, Hour Meter Reads: 2199, S/N: CAT0420EHLS07714

2011 Volvo BL70 4WD Loader/Backhoe, Extendahoe, EROPS, Heat & A/C, 12" & 24" Hoe Buckets, Powershift, Municipality Unit, Hour Meter Reads: 5582, S/N: VCE00B70C00020335

1998 Caterpillar 436C 4WD Loader/Backhoe, Extendahoe, Auxiliary Hydraulics, EROPS, Heat & A/C, 24" Hoe Bucket, Hour Meter Reads: 6084, S/N: 8TN00568

Case 580B Loader/Backhoe, ROPS, 24" Hoe Bucket, Hour Meter Reads: 1276, S/N: 5340811

## TRUCK CRANE

Little Giant 6430 All Terrain Hydraulic Truck Crane, 30-Ton Capacity, Municipality Unit

## TELESCOPIC FORKLIFT

2008 Caterpillar TL943, 9,000 lb Capacity

## SKID STEER LOADERS

2020 Kubota SVL95-25 Crawler Skid Steer Loader, Enclosed Cab with Heat & A/C, 2-Speed, Hi Flow & Auxiliary Hydraulics, 80" Bucket, Radio, Hour Meter Reads: 740, S/N: KBCZ063CCL1B50171

2016 Kubota SSV75 Skid Steer Loader, Auxiliary Hydraulics, 2-Speed, Joystick Controls, 78" Bucket, Hour Meter Reads: 8788, S/N: JKUS0751A00J21078

2014 Gehl R190 Skid Steer Loader, Auxiliary Hydraulics, 72" Bucket, Hour Meter Reads: 2263

2014 Gehl R190 Skid Steer Loader, Auxiliary Hydraulics, 66" Bucket, Hour Meter Reads: 2204

2011 John Deere 318D Skid Steer Loader, Auxiliary Hydraulics, 72" Bucket, Hour Meter Reads: 1594

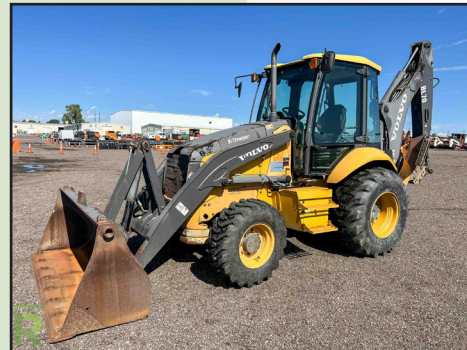
2006 John Deere 322T Crawler Skid Steer Loader, Auxiliary Hydraulics, 12" Rubber Tracks, 60" Bucket, Hour Meter Reads: 6299, S/N: T0322TB123323



2005 KOBELCO 70SR-11 HYDRAULIC EXCAVATOR W/ THUMB



PARTIAL VIEW OF NEW 2023 AGTQK MINI EXCAVATORS



2011 VOLVO BL70 4WD LOADER/ BACKHOE, MUNICIPALITY UNIT



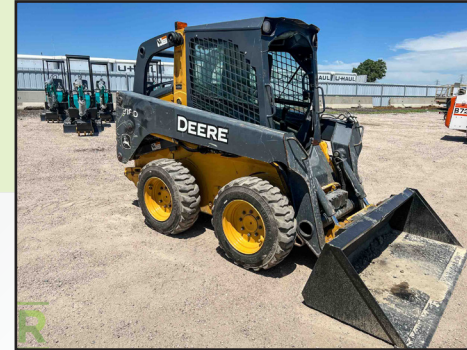
LITTLE GIANT 6430 CRANE, 30-TON CAPACITY, MUNICIPALITY UNIT



2014 GEHL R190 SKID STEER LOADER, [ 1 OF 2 ]



2016 KUBOTA SSV75 SKID STEER LOADER



2011 JOHN DEERE 318D SKID STEER LOADER



FORD 335 TRACTOR LOADER W/ BOX SCRAPER



2007 VERMEER RT450 RIDE-ON TRENCHER



2002 GENIE Z-45/25 4WD KNUCKLEBOOM LIFT

## SKID STEER LOADERS continued

2004 Thomas 245HDS Skid Steer Loader, Hydraulics, 72" Bucket, S/N: LM001014

2002 Bobcat 873 Skid Steer Loader, Auxiliary Hydraulics, 78" Bucket, Turbo, Hour Meter Reads: 4450, S/N: 514150442

2001 Bobcat 863 Skid Steer Loader, Auxiliary & High Flow Hydraulics, 72" Bucket, Hour Meter Reads: 3996, S/N: 51444731

2002 Bobcat 873 Crawler Skid Steer Loader, Auxiliary Hydraulics, 18" Rubber Tracks, 72" Bucket, Hour Meter Reads: 5987, S/N: 514151268

2005 Bobcat T250 Crawler Skid Steer Loader, 18" Rubber Tracks, Auxiliary Hydraulics, Hour Meter Reads: 4375, S/N: 525613620

## TRENCHERS

2007 Vermeer RT450 Ride-On Trencher, Deutz Diesel, Crumber, Front Counterweights, 57" Backfill Blade, Hour Meter Reads: 2199, S/N: 1VRX0721171001501

1999 Vermeer V8550A Ride-On Trencher, 4-Cylinder Diesel, w/ Backhoe Attachment, Crumber, 84" Backfill Blade, 12" Hoe Bucket, Offset Sliding Trencher Boom, Conveyor Shoot, Hour Meter Reads: 2391, S/N: 1VRT112P5X1000459

1998 Vermeer V4150A Ride On Trencher, Crumber, Backhoe Attachment, 72" Backfill Blade, Hour Meter Reads: 1286, S/N: 1VRP082R8W1000680

## TRACTORS

John Deere 2750 4WD Tractor/ Loader, Enclosed Cab, PTO, 3-Point, County Unit

Ford 335 Tractor/Loader, PTO, 3-Point, Gannon 66" Box Scraper with Ripper Teeth, Hour Meter Reads: 3445, S/N: C540440

Farmall 656 Farm Tractor, 6-Cylinder, PTO, 3-Point, Rear Auxiliary Hydraulics

## SCREENING PLANT

Towable Portable Screening Plant, Kohler Gas Engine, Hydraulic, Extra Screens, Ball Hitch

## COMPACTION EQUIPMENT

Caterpillar CP-443B Ride-On Sheepfoot Compactor, 66" Drum, Hour Meter Reads: 9090, S/N: IMG00363

Zip-It AZ300 Asphalt Zipper Machine, Cummins BT4, 34" Width w/ S/A Trailer, Pintle Hitch, Fits Wheel Loader, Municipality Unit

2005 Wacker RT Walk-Behind Trench Compactor, Lombardini, 33" Double Drums, Remote, Cleaning Pads, Hour Meter Reads: 715, S/N: 5605967

Rammax P33/24H Walk-Behind Trench Compactor, Hatz Diesel, 33" Double Drums, Cleaning Pads

1998 Vermeer TC-4A Towable Trench Compactor, Hatz Diesel, Hour Meter Reads: 738, S/N: 1VRP08262W1000292

## KNUCKLEBOOM LIFT

2002 Genie Z-45/25 4WD Knuckleboom Lift, Dual Fuel, 20" x 70" Basket, Hour Meter Reads: 2854, S/N: Z4525-20615

## FORKLIFT

Yale Forklift, 3,000 lb. Capacity, Pneumatic Tires, 130" Lift Height, 2-Stage Mast, 42" Forks, Hour Meter Reads: 1383, S/N: L221633



2001 BOBCAT 863 SKID STEER LOADER



2008 CATERPILLAR TL943 TELESCOPIC FORKLIFT, 9000 LB. CAPACITY



1999 VERMEER V8550A RIDE-ON TRENCHER W/ BACKHOE ATTACHMENT



CATERPILLAR CP-443B RIDE-ON SHEEPSFOOT ROLLER



VERMEER TC-4A TOWABLE TRENCH COMPACTOR





2008 FREIGHTLINER T/A DUMP TRUCK,  
CITY UNIT



PETERBILT 359 T/A DUMP TRUCK  
W/ CATERPILLAR 3406



2011 INTERNATIONAL PROSTAR  
TRUCK TRACTOR W/ CUMMINS ISX



2013 INTERNATIONAL 4300 S/A  
BUCKET TRUCK, 41 FT. HEIGHT



2008 CHEVROLET C4500 4WD CAB &  
CHASSIS W/ DURAMAX

## DUMP TRUCKS

2007 International 7400 T/A Dump Truck, DT570, Automatic, Hendrickson Rubber Pad Suspension, 15' Dump Box w/ Electric Tarp, City Unit

2008 Freightliner Business Class M2 T/A Dump Truck, 8.3L L6 Cummins, Automatic, Tuf-Trac Suspension, Ox Bodies 13' Dump Box With Electric Tarp, City Unit

2009 Freightliner Business Class M2 S/A Dump Truck, Cummins, Automatic, Spring Suspension, 10' Dump Box With Electric Tarp, City Unit

Peterbilt 359 T/A Dump Truck, Caterpillar 3406, 10-Speed, Air Ride Suspension, 15' Dump Box

1996 Freightliner FL80 T/A Dump Truck, Cummins, 9-Speed, Hendrickson Spring Suspension, 13' Dump Box With Electric Tarp

## TRUCK TRACTORS

2019 Kenworth T800 T/A Truck Tractor, Cummins X15, 500 HP, 13-Speed, 4-Bag Air Ride, 204" Wheel Base

2016 International ProStar Plus T/A Truck Tractor, 15.0L L6, 10-Speed, 4-Bag Air Ride, Sleeper, 227" Wheel Base

2011 International ProStar Limited T/A Truck Tractor, Cummins ISX, 435 HP, 15.0L L6, 13-Speed, 4-Bag Air Ride, Wet Kit, Sleeper, 228" Wheel Base

2007 Freightliner Columbia T/A Truck Tractor, 12.8L L6, 13-Speed, 4-Bag Air Ride, Wet Kit, 190" Wheel Base, Merritt Aluminum Headache Rack, City Unit

2007 International 9200i T/A Truck Tractor, Cummins ISX 400, 10-Speed, Air Ride, Wet Kit

## READY MIX TRUCKS

(5) Kenworth Freightliner, Mack & Sterling T/A Ready Mix Trucks

## BUCKET TRUCK

2013 International 4300 S/A Bucket Truck, 7.6L L6 MaxxForce, Automatic, Spring Suspension, Terex Hi-Ranger TL41 Boom, 41 Ft Platform Height, 11' Utility Box

## STREET SWEEPERS

2014 Elgin Pelican Street Sweeper, Dual Steer, Dual Gutter Brooms, John Deere 4-Cylinder Diesel, City Unit, 5179 Engine Hours

1999 Elgin Pelican Series P Street Sweeper, Dual Steer, Dual Gutter Brooms, Hour Meter Reads: 5880

## PICKUPS & FLATBED TRUCKS

Great Selection Of Pickups and Flatbeds: Including:

2009 Ford F250 XL Super Duty 4x4 Crew Cab Flatbed Truck, Triton 6.8L V10, Automatic, 9' Bed

1997 Chevrolet C7500 S/A Flatbed Truck, 6.0L V8, 5-Speed, 14' Bed

2004 GMC 2500 Heavy Duty 4x4 Crew Cab Pickup, 6.6L V8 Duramax, Automatic

2005 Chevrolet 2500 HD 4x4 Crew Cab Pickup, 6.6L V8, Automatic

## UTILITY TRUCKS

2008 Chevrolet C4500 S/A 4x4 Cab & Chassis, New 6.6L V8 Duramax Diesel Engine, Automatic, Crew Cab, 197" Wheel Base

2012 GMC 3500 Crew Cab Cab & Chassis, 6.0L V8, Automatic, Dually

(2) 2005 Ford F350 Super Duty XL 4WD Utility Trucks, 6.8L V10 EFI, Automatic



2009 FREIGHTLINER S/A  
DUMP TRUCK, CITY UNIT



2007 FREIGHTLINER COLUMBIA  
TRUCK TRACTOR, COUNTY UNIT



2019 KENWORTH TRUCK TRACTOR  
W/ CUMMINS X15, COUNTY UNIT



2014 ELGIN PELICAN STREET SWEEPER,  
CITY UNIT



DORSEY 48' VAN TRAILER, SETUP FOR OFFICES



INTERNATIONAL 4700 EMERGENCY  
ONE FIRE TRUCK, CITY UNIT



TRAIL-EZE T/A HYDRAULIC TAIL TRAILER,  
42' X 96"



2000 TRANSCRAFT EAGLE 48' X 102"  
ALUMINUM FLATBED TRAILER



ONAN 150KW TRAILER MOUNTED GENERATOR  
W/ CUMMINS 1850 HP, MUNICIPALITY UNIT



GORMAN RUPP 8" TOWABLE DIESEL PUMP

## UTILITY TRUCKS continued

2007 Chevrolet 3500 Utility Van, 6.0L V8, Automatic, 12' Box

## FIRE TRUCK

1995 International 4700 Emergency One Fire Truck, DT466, Crew Cab, 12' Bed, City Unit

## WATER TANKER TRAILERS

2006 Polar T/A Stainless Steel Water Tanker Trailer, 7500 Gallon Capacity With Baffles, Berkeley Pump, Spring Suspension, County Unit

Etnyre T/A Water Tanker Trailer, 6000 Gallon Capacity, Rear Spray, Spring Suspension, County Unit

## HYDRAULIC TAIL TRAILER

1980 Trail-EZE T/A Hydraulic Tail Trailer, 42' x 96", 62,000 lb. GVWR, Spring Suspension, Braden Winch

## END DUMP TRAILER & LOWBOY TRAILER

2006 Mate T/A Aluminum End Dump Trailer, 26' Length, Air Ride Suspension, Electric Tarp

1995 Witzco 35 Ton Lowboy Trailer, Detachable Gooseneck

## FLATBED TRAILER

2000 Transcraft Eagle T/A Flatbed Trailer, Aluminum/Combo, Spread Axle, Air Ride Suspension

## OFFICE TRAILER

1992 Dorsey T/A Van Trailer, Setup for Offices, Spring Suspension, Heat A/C, Electrical, Lighting, Side Access Door, Aluminum Stairs

1985 CEN T/A Office Trailer 12' x 40'

## EQUIPMENT TRAILERS

Great Selection Of Equipment Trailers: Including:

2007 Towmaster Tri-Axle Equipment Trailer, Duals, 33' x 102", Tilt Deck, Air Brakes, Pintle Hitch, County Unit

1993 Trail King TK32 T/A Equipment Trailer, Duals, 5' Dovetail, Fold Down Ramps, Air Brakes, Pintle Hitch

## STEEL STORAGE CONTAINERS

(7) New 40' Steel Storage Containers, High Cube, (4) Side Door Openings

(2) 2022 40' Steel Storage Containers, High Cube  
GENERATORS, PUMPS & AIR COMPRESSOR

Onan DFLC-3371214 Generator, 1250 KW V16, Cummins KTA50-G3 Diesel Engine, 1850 HP, 1000-Gallon Fuel Tank, w/ 40' Van Trailer, Municipality Unit, Hour Meter Reads: 492, S/N:

2018 Aksa APD220C-6 Skid Mounted Generator, 220KVA, Cummins 8.3L Diesel

DHS System Towable Generator, 18 KW, Isuzu 4-Cylinder Diesel, Hour Meter Reads: 744, S/N: TMSSP-29541

Gorman Rupp Towable 8" Pump, John Deere Diesel Power Prime DV100 Towable 4" Pump, Perkins 4-Cylinder Diesel

Pioneer 4" Towable Pump, John Deere Diesel

Ingersoll Rand Towable Air Compressor, John Deere Diesel, 185 CFM

CP Towable Air Compressor, 185 CFM John Deere Diesel

**Additional Equipment Will Be Added  
Into This Auction!**



ETNYRE WATER TANKER TRAILER,  
6000 GALLON, COUNTY UNIT



2006 MATE 26 FT. ALUMINUM  
END DUMP TRAILER



NEW 40' STEEL STORAGE CONTAINER,  
HIGH CUBE, ( 1 OF 7 )



INGERSOLL RAND 185 CFM DIESEL  
AIR COMPRESSOR



WACHS VACUUM TRAILER, CITY UNIT





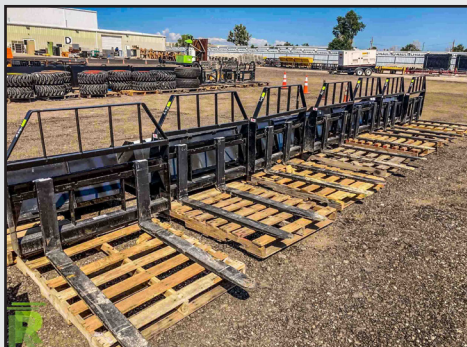
2007 TOWMASTER TRI-AXLE EQUIPMENT TRAILER, COUNTY UNIT



TOWABLE PORTABLE SCREENING PLANT W/ EXTRA SCREENS



HUDSON OSCAR 236 PORTABLE BANDSAW MILL W/ 17 ORIGINAL HOURS



VIEW OF FORK ATTACHMENTS FOR SKID STEERS



NEW SAFETY TRAFFIC CONES

#### MISCELLANEOUS EQUIPMENT

Wachs Trav-L-Vac T/A Vacuum Trailer, Kohler Command Pro 27 Gas Engine, 27 HP, Pintle Hitch, City Unit

Hudson Portable Oscar 236 Bandsaw Mill, 23 HP, Extra Blades, Hour Meter Reads: 17, S/N: TR30360873

Crafco SS125 Towable Crack Sealing Machine, Isuzu 3-Cylinder Diesel, 125 Gallon Capacity

(2) 2012 Wanco WTMMB Towable Message Boards, County Units

#### OVER (300) NEW SKID STEER ATTACHMENTS

New Hydraulic Posthole Digging Attachments To Fit Skid Steer Loader with 12" and 18" Auger Bits

New 76" Hydraulic Skeleton Grapple Buckets to Fit Skid Steer Loader, Single Cylinder

New 48" Fork Attachments To Fit Skid Steer Loader

New Hydraulic Grader Attachments To Fit Skid Steer Loader

New Hydraulic Tree Pulling Attachments To Fit Skid Steer Loader

New Hydraulic Dozer Blades To Fit Skid Steer Loader

New Hydraulic 72" Brush Cutting Attachments To Fit Skid Steer Loader

New Skid Steer Buckets & Rock Buckets, Various Sizes

New 72" Hydraulic Rototiller Attachments To Fit Skid Steer Loader

New Hydraulic Cement Mixer Attachments To Fit Skid Steer Loader

New Hydraulic Breaker Attachments To Fit Skid Steer Loader

New Landscaping & Root Rakes To Fit Skid Steer Loader

New 72" Hydraulic Vibratory Roller Attachments To Fit Skid Steer Loader

New Hydraulic 72" Box Broom/ Sweeper Attachments To Fit Skid Steer Loader

New Hydraulic 72' Hydraulic Angle Broom Attachments To Fit Skid Steer Loader

New Hydraulic Trencher Attachments To Fit Skid Steer Loader

#### NEW TIRES

(5) Sets of (4) New Forerunner 12-16.5 Skid Steer Tires w/ Wheels

(4) Sets of (4) New Forerunner 10-16.5 Skid Steer Tires with Wheels

(5) Sets of (4) New Forerunner 12-16.5 Skid Steer Tires

(5) Sets of (4) New Forerunner 10-16.5 Skid Steer Tires

(9) New Sets Of Radial Trailer Tires

#### MISCELLANEOUS

New 2022 Gold Mountain Storage Shelters

New Bastone Portable Toilets w/ Showers

(15) New 27" x 90" Metal Work Tables

New Steelman 10' 30-Drawer Toolboxes

New Fork Extensions

Bunks Of Wood Timbers, Various Sizes

New Plate Compactors and Jumping Jacks

(500) New Steelman PVC Orange Safety Traffic Cones, 28" Height, Black Base



CRAFECO SS125 TOWABLE CRACK SEALING MACHINE



ZIP-IT AZ300 ASPHALT ZIPPER MACHINE, MUNICIPALITY UNIT



WANCO MESSAGE BOARD, COUNTY UNIT



VIEW OF SKID STEER TIRES



2018 AKSA 220KVA SKID MOUNTED GENERATOR, CUMMINS DIESEL

## AUCTION INFORMATION

DATE: Wednesday July 12th, 2023

ADDRESS: 7500 York Street, Denver, CO 80229

DIRECTIONS: Southbound I-25: Take the 84th Ave. Exit, #219, go east to Washington Ave., then south to 78th Ave., then east to York . then south on York approx. 3 blocks. Northbound I-25: Take the I-76 Exit #216A, then veer left onto the 70th Ave. Exit #216B, then east on 70th Ave. approx. 1.3 miles to York, then 2 blocks north. Westbound on I-270: Take the York St. Exit #1, then proceed north approx. 1 mile. Eastbound on I-76: Take the 74th Ave Exit #8, then go back west approx. 1 mile to York St., then 2 blocks north. Watch for auction signs.

INSPECTION: July 10th & 11th from 8:15am to 4:45pm. Auction location is 7500 York St., Denver, CO 80229.

BUYERS' PREMIUM: All purchases will be assessed a 13% Buyer's Premium. This will be added to the purchase price and is subject to all applicable sales taxes. (3% discount is available - see payment terms).

PAYMENT TERMS: Full payment required by 4:45pm on Monday, July 17th, in cash, certified funds, bank wire transfer, checks approved by Telecheck or accompanied by bank letter, Visa, MasterCard or Discover. If paying in full in cash, cashier check, bank wire transfer or check with a letter of guarantee, a 3% reduction off of the stated buyers' premium is given.

Due to the Coronavirus and the goal to reduce interactions and maintain social distancing. Our Payment terms will be modified going forward as we attempt to have all electronic payments.

- Payments under \$1000 will be automatically charged to the credit card on file, immediately following the auction.
- Payments over \$1000 can be made by bank wire transfer and cash deposits made directly into our account at a Chase Bank.
- Cashier Checks will be accepted in our office, at this time we are not accepting cash in the office
- Payments in bank wire transfer and those directly deposited into our account will receive a 3% reduction off the buyer's premium.

REMOVAL: All purchases must be removed at buyers' expense and responsibility by 4:45 p.m. on Friday, July 21st, 2023. Hours are 8:15am-4:45pm on weekdays. No removal on the weekend. Removal must be scheduled by appointment only through Our Scheduling System. You will receive a link to this in your invoice after the auction.

## TWO UPCOMING INTERNET AUCTIONS:

### VEHICLES, CONTRACTOR & RENTAL YARD EQUIPMENT

Tuesday, July 25th at 8:30am  
Inspection: July 24th from 8:15am - 4:45pm

The auction typically includes: vehicles, trailers, lawn and garden equipment, attachments, rental yard equipment, shop equipment, concrete equipment, generators, toolboxes, gang boxes, ladders and more!



### GOVERNMENT/FLEET VEHICLES & EQUIPMENT

Wednesday, August 16th at 9:00am  
Inspection: August 14th & 15th from 8:15am - 4:45pm

The auction typically includes: Pickups, SUV's, Sedans, Police Vehicles, Trailers, Attachments, and More!



Contact Steve @ 303-289-1600 x 104 if you have quality construction equipment you want to get into our September Construction Auction!