



2016 TYMCO DST-6 STREET SWEEPER W/ 30,000 MILES, MUNICIPALITY UNIT

WHAT

An auction of heavy construction equipment from companies, local contractors & Government Entities

WHEN

Wednesday, September 13th @ 9:00am

Inspection: September 11th & 12th

from 8:15am - 4:45pm

WHERE

7500 York Street, Denver, CO 80229

INTERNET AUCTION



HEAVY CONSTRUCTION & CONTRACTING EQUIPMENT

WEDNESDAY • Septebmer 13th • 9:00 A.M.

Inspection: September 11th & 12th from 8:15 a.m. to 4:45 p.m.



2004 INTERNATIONAL 7400 4WD DUMP TRUCK, [1 OF 2], COUNTY UNIT



2006 MACK VISION T/A TRUCK TRACTOR W/ 12.0L

SELLING FOR

Jefferson County
Adams County
Town of Castle Rock
Weld County
Town of Vail
Denver Water Department
City of Broomfield
Xcel Energy

AUCTION INCLUDING:

Motor Grader	Lowboy Trailer
Loader/Backhoes	Equipment Trailers
Hydraulic Excavator	Towable Pumps
Skid Steer Loaders	Storage Containers
Truck Tractor	New Attachments
Forklift	Generators
Trenchers	Oil Field Tanks
Utility Trucks	Compressor Truck
Dump Trucks	Step Deck Trailers
Flatbed Trucks	Flatbed Trailers
Bucket Trucks	Much More!
Compaction Equipment	
Pickups	

Roller

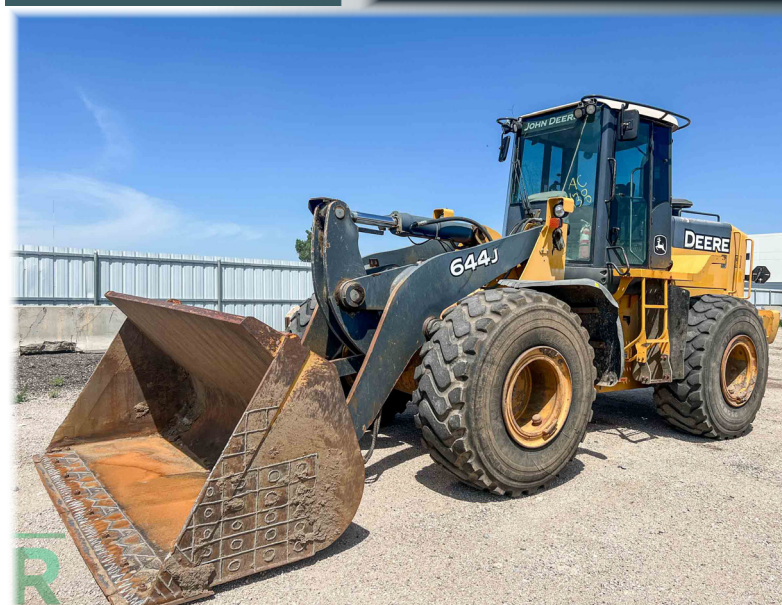
Heavy Construction & Contracting Equipment



2018 JOHN DEERE 410L 4WD LOADER/ BACKHOE, MUNICIPALITY UNIT

7500 York Street • Denver, Colorado 80229
WEDNESDAY • September 13th • 9:00 A.M.
Inspection: September 11th & 12th 8:15 a.m. to 4:45 p.m.

Internet Only Auction • Bidding Available at:
www.RollerAuction.com/construction



2006 JOHN DEERE 644J WHEEL LOADER, COUNTY UNIT



2006 CATERPILLAR 320CL HYDRAULIC EXCAVATOR W/ THUMB

- | | | | | | |
|-------------------|------------------------|------------------|---------------|----------------------|----------------------|
| • Motor Grader | • Hydraulic Excavators | • Truck Tractors | • Forklift | • Trenchers | • Storage Containers |
| • Loader/Backhoes | • Skid Steer Loaders | • Wheel Loader | • Dump Trucks | • Equipment Trailers | • New Attachments |



2015 JOHN DEERE 410K 4WD LOADER/
BACKHOE, MUNICIPALITY UNIT (1 of 5)



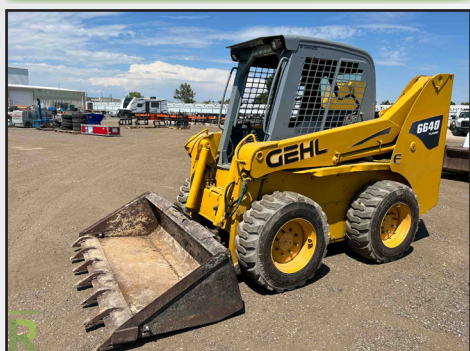
2000 JOHN DEERE 310E 4WD
LOADER/ BACKHOE



2018 KUBOTA SVL95-2S CRAWLER
SKID STEER LOADER W/ 1000 HOURS



JOHN DEERE 250 SKID STEER LOADER



2008 GEHL 6640 SKID STEER LOADER

LOADER/ BACKHOES

2018 John Deere 410L 4WD Loader/ Backhoe, EROPS, Heat & A/C, Extendahoe, Auxiliary Hydraulics, 24" Backhoe Bucket, Municipality Unit, Hour Meter Reads: 3,480, S/N: 1T0410LXPJF338405

2015 John Deere 410K 4WD, Loader/ Backhoe, EROPS, Heat & A/C, Extendahoe, Auxiliary Hydraulics, 24" Backhoe Bucket, Municipality Unit, Hour Meter Reads: 3,203, S/N: 1T0410KXFE276269

2013 John Deere 410K 4WD Loader/ Backhoe, EROPS, Heat & A/C, Extendahoe, Auxiliary Hydraulics, 24" Backhoe Bucket, Municipality Unit, Hour Meter Reads: 1,771, S/N: 1T0410KXPDE244987

2015 John Deere 410K 4WD Loader/Backhoe, EROPS, Heat & A/C, Extendahoe, Auxiliary Hydraulics, 24" Backhoe Bucket, Municipality Unit, Hour Meter Reads: 3,389, S/N: 1T0410KXTFE276307

2015 John Deere 410K 4WD Loader/Backhoe, EROPS, Heat & A/C, Extendahoe, Auxiliary Hydraulics, 24" Backhoe Bucket, Municipality Unit, Hour Meter Reads: 3,951, S/N: 1T0410KXJEE27389

2015 John Deere 410K 4WD Loader/ Backhoe, EROPS, Heat & A/C, Extendahoe, Auxiliary Hydraulics, 24" Backhoe Bucket, Municipality Unit, Hour Meter Reads: 4,106, S/N: 1T0410KXJEE273524

2001 John Deere 310G 4WD Loader/ Backhoe, EROPS, Auxiliary Hydraulics, 24" Hoe Bucket, S/N: T0310GX898144

2000 John Deere 310E 4WD Loader/ Backhoe, EROPS, Auxiliary Hydraulics, 4 in 1 Front Bucket, 24" Hoe Bucket, S/N: T0310EX887935

MOTOR GRADER

2008 John Deere 772D 6WD Motor Grader, Rear Ripper, Front Scarifier, 14' Moldboard, Heat & A/C, Hour Meter Reads: 10,231, S/N: DW7720X620582

HYDRAULIC EXCAVATOR

2006 Caterpillar 320CL Hydraulic Excavator, 32" TBG, 36" Bucket With Hydraulic Thumb Attachment, Heat & A/C, Hour Meter Reads: 8111, S/N: CAT0320CAPA806281

WHEEL LOADER

2006 John Deere 644J Wheel Loader, Cab w/ Heat & A/C, 112" Bucket, Quick Coupler, County Unit, Hour Meter Reads: 9,661, S/N: DW644JX608695

SKID STEER LOADERS

2018 Kubota SVL95-2S Crawler Skid Steer Loader, Enclosed Cab With Heat & A/C, 18" Rubber Tracks, High Flow & Auxiliary Hydraulics, 67" Bucket, Hour Meter Reads: 1000, S/N: 41181

2017 Case SV340 Skid Steer Loader, Enclosed Cab w/ Heat & A/C, High Flow & Auxiliary Hydraulics, 72" Bucket, 12-16.5 Tires, Hour Meter Reads: 3491, S/N: NHM431296

2012 Bobcat S650 Skid Steer Loader, Enclosed Cab, Auxiliary Hydraulics, 72" Bucket, Hour Meter Reads: 3150, S/N: A3NV18664

2008 Gehl 6640 Skid Steer Loader, Auxiliary Hydraulics, 72" Bucket, Turbo, Hour Meter Reads: 4252, S/N: GHL06640V00607559

1999 John Deere 250 Skid Steer Loader, Auxiliary Hydraulics, 78" Bucket, Hour Meter Reads: 4740, S/N: KV0250A150829

1994 Bobcat 853 Skid Steer Loader, Auxiliary Hydraulics, 66" Bucket, Hour Meter Reads: 8124, S/N: 510127353

TRENCHERS

2001 Vermeer RT700 Ride-On Trencher, w/ Backhoe Attachment, Offset Sliding Boom, Crumber, 75" 6-Way Backfill Blade, John Deere Diesel, Hour Meter Reads: 4435, S/N: 1VRW092H911000155



2001 JOHN DEERE 310G 4WD
LOADER/ BACKHOE



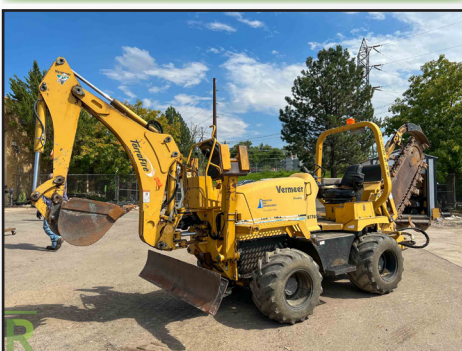
2008 JOHN DEERE 772D 6WD
MOTOR GRADER W/ RIPPER



2017 CASE SV340 SKID STEER LOADER
W/ 3491 HOURS



2012 BOBCAT S650 SKID STEER LOADER



2001 VERMEER RT700 RIDE-ON TRENCHER
W/ BACKHOE ATTACHMENT



VERMEER V5750 RIDE-ON TRENCHER
W/ CABLE PLOW



HYPAC C330B RIDE-ON SMOOTH DRUM ROLLER



2005 INTERNATIONAL 7400 4WD
DUMP TRUCK, (1 OF 3), COUNTY UNIT



2003 INTERNATIONAL 4300 COMPRESSOR
TRUCK, MUNICIPALITY UNIT



2005 GMC C4500 UTILITY TRUCK
W/ DURAMAX

TRENCHERS continued

1997 Vermeer V5750 Ride-On Trencher, w/ Cable Plow Attachment, Deutz Diesel, Front Counterweights, 72" Backfill Blade, S/N: 1VRM08271V1000313

COMPACTION EQUIPMENT

2015 Volvo PT125 Pneumatic Roller, 9-Wheel, Kubota 4-Cylinder Diesel, Hour Meter Reads: 1200, S/N: VCEot125C0S326122

Hypac C330B Ride-On Smooth Drum Roller, 42" Rear Drum, 40" Front Drum, Cleaning Pads, Spray Bars, Hour Meter Reads: 8144, S/N: 109B15803584

Ingram 9-2800 Pneumatic Roller, 9-Wheel, John Deere Diesel, Municipality Unit, Hour Meter Reads: 9282, S/N: 578435P144

Tampo RS28 Ride-On Smooth Drum Roller, Detroit Diesel, 80" Front Drum, Hour Meter Reads: 4678, S/N: GMC20003

FORKLIFT

Kalmer DCE-75-6 Forklift, Enclosed Cab With Heat & A/C, 16,500 lb. Capacity, Side Shift, Fork Positioning, 8' Forks, Pneumatic Tires, Dual Fronts, 197" Lift Height, Hour Meter Reads: 7465, S/N: T321040586

STREET SWEEPER

2016 Tymco DST-6 Street Sweeper, John Deere Rear Engine, Paccar PX7 Front Engine, , Mounted On Peterbilt 220 Chassis, Right Hand Steer, Dual Gutter Brooms, Dustless, Backup Camera, 30,373 Miles, Municipality Unit

DUMP TRUCKS

2006 International 7500 4WD S/A Dump Truck, HT570, Automatic, Spring Suspension, 10' Dump Box With Tarp, Monroe 12' Snowplow, Tailgate Sander / Spreader, Force America Command All Controls, County Unit

(2) 2005 International 7500 4WD S/A Dump Truck, HT530, Automatic, Spring Suspension, 10' Dump Box With Tarp, Monroe 11' Snowplow, Tailgate Sander / Spreader, Force America Command All Controls, County Units

(2) 2004 International 7400 4WD S/A Dump Trucks, DT530, Automatic, Spring Suspension 10' Dump Box With Tarp, Monroe 11' Snowplow, Tailgate Sander / Spreader, Force America Command All Controls, County Units

BUCKET TRUCKS

2014 Freightliner M2 S/A Bucket Truck, Cummins, Automatic, Spring Suspension, Terex Hi-Ranger TL-41 Boom, 41' Platform Height, Front Hydraulic Stabilizers, 11' Utility Box

2012 Ram 5500 Heavy Duty 4WD Bucket Truck, 6.7L, Automatic, Dually, Altec AT37G Bucket, 37.5' Max Height, 400 Lb. Max Capacity

2012 Ram 5500 Heavy Duty 4WD Bucket Truck, 6.7L, Automatic, Dually, AT37G Bucket, 37.5' Max Height, 400 Lb. Max Capacity

2010 Dodge Ram 5500 Heavy Duty 4WD Bucket Truck, 6.7L, Automatic, Dually, Altec AT37-G Bucket, 37.5' Max Height, 350 Lb. Max Capacity

TRUCK TRACTOR

2006 Mack Vision T/A Truck Tractor, Mack 12.0L L6, 13-Speed, 4-Bag Air Ride, Sleeper, 217" Wheel Base, 52,000 lb. GVWR, All Aluminum Rims

COMPRESSOR TRUCK

2003 International 4300 S/A Compressor Truck, DT466, Automatic, 12' Utility Box, Boss Air Compressor, Municipality Unit

FLATBED TRUCKS

2015 Ram 2500 Heavy Duty 4WD Flatbed Truck 5.7L, Automatic, 8.5' Bed

2004 Ford F450 Super Duty RWD Flatbed Truck, 6.8L, Automatic



2015 VOLVO PT125 9-WHEEL
PNEUMATIC ROLLER



KALMER DIESEL FORKLIFT,
16,500 LB. CAPACITY



2014 FREIGHTLINER S/A 41' BUCKET TRUCK
W/ CUMMINS DIESEL



2014 GORMAN RUPP 6" TOWABLE PUMP
W/ JOHN DEERE DIESEL



2014 MULTIQUIP 45 KVA TOWABLE
GENERATOR, (1 OF 2)



TRI-AXLE OFFICE TRAILER, 12' X 56'



VIEW OF NEW BRUSH CUTTING ATTACHMENTS FOR SKID STEER LOADER



2003 TRAIL KING TRI-AXLE 55-TON LOWBOY TRAILER, COUNTY UNIT



2006 WILSON 48' X 96" FLATBED TRAILER, [1 OF 2]



2023 BELSHE T/A GOOSENECK EQUIPMENT TRAILER, 25' X 102"

UTILITY TRUCKS

Great Selection Of Utility Trucks Including:

2005 GMC C4500 S/A Crew Cab Utility Truck, Duramax Diesel, 6.6L, Automatic, Liftgate

2008 Ford F450 Super Duty XL RWD Utility Truck, 6.8L, Automatic, Dually, Venturo ET8K Truck Crane, Honda EM5000SX Generator

2005 Ford F450 Super Duty XL RWD Utility Truck, 6.8L, Automatic, Dually, Venturo ET6KR Truck Crane, 2,200 Lb. Max Capacity, Honda EM6500SX Generator

2002 Ford F250 Super Duty XL 4WD Utility Truck, 6.8L, Automatic

1997 Ford F450 Super Duty RWD Utility Truck, 7.3L, Automatic, Dually, Kohler Diesel Generator, Pelsue Model 1240T Centrifugal Blower

PICKUP TRUCKS

Great Selection Of Pickups Including:

2019 Dodge Ram 1500 4WD Crew Cab Pickup, 5.7L, Automatic, Crossover Toolbox

2018 Dodge Ram 1500 Lone Star 4WD Crew Cab Pickup, 5.7, Automatic

2017 Dodge Ram 1500 Big Horn 4WD Crew Cab Pickup, 5.7L, Automatic

2017 Dodge Ram 2500 Heavy Duty 4WD Crew Cab Pickup, 6.4L, Automatic, Fuel Transfer Box, Crossover Toolbox

2017 Ram 2500 Heavy Duty 4WD Crew Cab Pickup, 6.4L, Automatic, Fuel Transfer Box, Crossover Toolbox

2016 Dodge Ram 1500 4WD Crew Cab Pickup, 5.7L, Automatic

2015 Dodge Ram 1500 4WD Crew Cab Pickup, 5.7L, Automatic

[2] 2008 Ford F350 Super Duty XL 4WD Utility Trucks, 6.8L, Automatic

LOWBOY TRAILER

2003 Trail King TK110HT-503 Tri-Axle Lowboy Trailer, 55-Ton Capacity, 50' x 102", Air Ride Suspension, Hydraulic Fold Down Rear Deck, Hydraulic Fold Down Ramps, Upper Hydraulic Deck, Braden Winch, 131,540 lb. GVWR, County Unit

DROP DECK TRAILER

1986 Great Dane GPD-48 T/A Drop Deck Trailer, 48' x 96", Spring Suspension, 80,000 lb. GVWR

FLATBED TRAILERS

2012 Fontaine T/A Flatbed Trailer, 40' x 96", Spring Suspension, 70,000 lb. GVWR

[2] 2006 Wilson CF-900 Road Brute T/A Flatbed Trailers, 48' x 96", Aluminum/ Combo, Air Ride Suspension, Spread Axle

1999 Transcraft Eagle Super-Beam T/A Flatbed Trailer, 48' x 96", Aluminum/ Combo, Air Ride Suspension, Spread Axle

1998 Wilson T/A Flatbed Trailer, 48' x 96", Aluminum/ Combo, Air Ride Suspension, Spread Axle

EQUIPMENT TRAILERS

Great Selection Of Equipment Trailers Including:

2023 Belshe DT255-2 T/A Gooseneck Equipment Trailer, 25' x 102" Deck, 5' Dovetail, Fold Down Ramps, 25,500 lb. GVWR

2014 Load King 202LT T/A Equipment Trailer, Dually, 19' x 102" Deck, 5' Dovetail, 5' Fold Down Ramps, 47,600 lb. GVWR, Pintle Hitch

2004 Trail King TK18LP-242 T/A Equipment Trailer, Duals, 8' x 19' Deck, 5' Dovetail, 5' Fold Down Ramps

2001 Maxey T/A Gooseneck Equipment Trailer, 8' x 21'



NEW 40' STEEL STORAGE CONTAINER, HIGH CUBE



VIEW OF NEW SKID STEER TIRES



PARTIAL VIEW OF STEEL TRENCH BOXES



PREMIER UNUSED 400 BBL STEEL OILFIELD TANKS



PARTIAL VIEW OF WOOD TIMBERS

AUCTION INFORMATION

DATE: Wednesday, September 13th, 2023

ADDRESS: 7500 York Street, Denver, CO 80229

DIRECTIONS: Southbound I-25: Take the 84th Ave. Exit, #219, go east to Washington Ave., then south to 78th Ave., then east to York . then south on York approx. 3 blocks. Northbound I-25: Take the I-76 Exit #216A, then veer left onto the 70th Ave. Exit #216B, then east on 70th Ave. approx. 1.3 miles to York, then 2 blocks north. Westbound on I-270: Take the York St. Exit #1, then proceed north approx. 1 mile. Eastbound on I-76: Take the 74th Ave Exit #8, then go back west approx. 1 mile to York St., then 2 blocks north. Watch for auction signs.

INSPECTION: September 11th & 12th from 8:15am to 4:45pm

Auction location is 7500 York St., Denver, CO 80229.

BUYERS' PREMIUM: All purchases will be assessed a 13% Buyer's Premium. This will be added to the purchase price and is subject to all applicable sales taxes. [3% discount is available - see payment terms].

PAYMENT TERMS: Full payment required by 4:45pm on Monday, September 18th, in cash, certified funds, bank wire transfer, checks approved by Telecheck or accompanied by bank letter, Visa, MasterCard or Discover. If paying in full in cash, cashier check, bank wire transfer or check with a letter of guarantee, a 3% reduction off of the stated buyers' premium is given.

Due to the Coronavirus and the goal to reduce interactions and maintain social distancing. Our Payment terms will be modified going forward as we attempt to have all electronic payments.

- Payments under \$1000 will be automatically charged to the credit card on file, immediately following the auction.
- Payments over \$1000 can be made by bank wire transfer and cash deposits made directly into our account at a Chase Bank.
- Cashier Checks will be accepted in our office, at this time we are not accepting cash in the office
- Payments in bank wire transfer and those directly deposited into our account will receive a 3% reduction off the buyer's premium.

REMOVAL: All purchases must be removed at buyers' expense and responsibility by 4:45 p.m. on Friday, September 22nd, 2023. Hours are 8:15am-4:45pm on weekdays. No removal on the weekend. Removal must be scheduled by appointment only through Our Scheduling System. You will receive a link to this in your invoice after the auction.

OFFICE TRAILER

Tri-Axle Office Trailer, 12.5' x 56.5', [2] Side Door Entries, A/C, Electrical, Ball Hitch

STEEL STORAGE CONTAINERS

[3] New 2023 40' Steel Storage Containers, High Cube, [2] Double Side Entry Doors

[6] 40' Steel Storage Containers, High Cube

20' Steel Storage Containers

GENERATORS

[2] 2014 Multiquip Whisperwatt 45 T/A Towable Generators, 45 KVA, Isuzu 4-Cylinder Diesel, Mounted on Superior Trailer, Ball Hitch

TOWABLE PUMPS

2014 Gorman Rupp 4" Towable Pump, John Deere Diesel, Hour Meter Reads: 6201, S/N: 1554381

Pioneer Towable 6" Pump, John Deere 6-Cylinder Diesel, Pintle Hitch, Hour Meter Reads: 8,010

OILFIELD STEEL TANKS

[10] Unused Premier 400 BBL Steel Holding Tanks, 16,800 Gallon Capacity, 12' Height, 15'6" Diameter, Can Be Used For Water, Fuel or Oil

[9] Unused Premier 300 BBL Steel Holding Tanks, 12,600 Gallon Capacity, 9' Height, 15'6" Diameter, Can Be Used For Water, Fuel or Oil

OVER [100] NEW SKID STEER ATTACHMENTS

Snow Pushers, 8' & 10'

Hydraulic Posthole Digging Attachments w/ Auger Bits

76" Hydraulic Skeleton Grapple Buckets

48" Fork Attachments

Hydraulic Grader Attachments

Hydraulic Tree Pulling Attachments

Hydraulic Dozer Blades

Brush Cutting Attachments

Skid Steer Buckets & Rock Buckets, Various Sizes

72" Hydraulic Rototiller Attachments

Hydraulic Cement Mixer Attachments

Hydraulic Breaker Attachments

Root Rakes

72" Hydraulic Vibratory Roller Attachments

Hydraulic 72" Box Broom/ Sweeper Attachments

Hydraulic 72' Hydraulic Angle Broom Attachments

Hydraulic Trencher Attachments

Skid Steer Tires

MISCELLANEOUS

Assorted Trench Boxes w/ Spreaders

[5] BTI BX10 Hydraulic Breaker Attachments to Fit Loader/ Backhoe, Municipality Units

Aluminum Trench Boxes

Excavator Buckets, Hed Shaker Attachments, Compaction Wheels

[15] New 27" x 90" Metal Work Tables

[15] New Steel Cattle Feeders, 90"

New Self Dumping Trash Hoppers w/ Forklift Pockets

New Fork Extensions

Bunks Of Wood Timbers, Various Sizes

Large Quantity of Rubber Speed Bumps, City Units

ADDITIONAL EQUIPMENT WILL BE ADDED TO THE AUCTION

Contact Steve @ 303-289-1600 x 104 if you have quality construction equipment you want to get into our November auction!

BIG BOY TOYS

Wednesday • September 13th
at 2:00pm

7500 York Street Denver, CO 80229

Inspection: September 11th & 12th
from 8:15am - 4:45pm

Auction Includes: 1976 Gremlin, 2017 Dutchmen Kodiak Camper, 1974 1/2 MGB, Harley Davidson Motorcycles, Jeep Wranglers, Yamaha WaveRunners, New Outdoor Kitchen Equipment, and Much More!

