



2012 INTERNATIONAL WORKSTAR 7500
DUMP TRUCK, CITY UNIT

WHAT

An auction of heavy construction equipment from companies, local contractors & Government Entities

WHEN

Wednesday, November 8th @ 9:00am

Inspection: November 6th & 7th

from 8:15am - 4:45pm

WHERE

7500 York Street, Denver, CO 80229

INTERNET AUCTION



SELLING FOR

Denver Water Department
Jefferson County
Douglas County
Weld County
Town of Vail
City of Thornton

HEAVY CONSTRUCTION & CONTRACTING EQUIPMENT

WEDNESDAY • November 8th • 9:00 A.M.

Inspection: November 6th & 7th from 8:15 a.m. to 4:45 p.m.



2011 KUBOTA M9540D 4WD TRACTOR/ LOADER
W/ 2599 HOURS



2013 TYMCO 600 STREET SWEEPER, COUNTY UNIT

AUCTION INCLUDING:

Wheel Loader	Lowboy Trailer
Loader/Backhoes	Equipment Trailers
Mini Excavators	Beilly Dump Trailers
Skid Steer Loaders	Storage Containers
Truck Tractors	New Attachments
Telescopic Forklift	Generators
Tractor/Loaders	Van Trailers
Utility Trucks	Office Trailers
Dump Trucks	Shuttle Bus
Flatbed Trucks	Infra-Red Truck
Street Sweeper	Much More!
Water Truck	
Pickups	



2007 FREIGHTLINER S/A 4WD DUMP TRUCK,
82K MILES, MUNICIPALIT UNIT



2013 MACK CHU613 TRUCK TRACTOR,
18- SPEED, (1 OF 3), COUNTY UNITS

- | | | | | | |
|-------------------|----------------------|------------------|-----------------------|----------------------|----------------------|
| • Wheel Loader | • Mini Excavators | • Truck Tractors | • Telescopic Forklift | • Water Truck | • Storage Containers |
| • Loader/Backhoes | • Skid Steer Loaders | • Wheel Loader | • Dump Trucks | • Equipment Trailers | • New Attachments |

Heavy Construction & Contracting Equipment



2015 JOHN DEERE 410K 4WD LOADER/ BACKHOE,
EXTENDAHOE, MUNICIPALITY UNIT

7500 York Street • Denver, Colorado 80229
WEDNESDAY • November 8th • 9:00 A.M.
Inspection: November 6th & 7th 8:15 a.m. to 4:45 p.m.

Internet Only Auction • Bidding Available at:
www.Rollerauction.com/construction



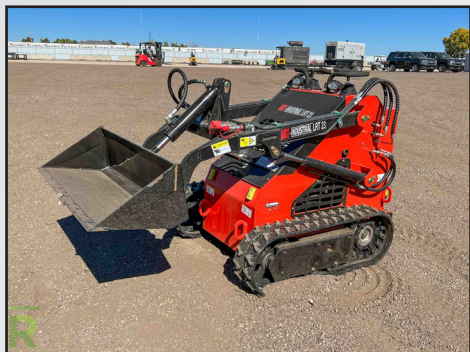
2016 JOHN DEERE 310SL 4WD
LOADER/ BACKHOE, EXTENDAHOE, [1 OF 2]



2007 CASE 440 SKID STEER LOADER



BOBCAT 864 CRAWLER SKID STEER LOADER



NEW 2023 AGT LRT23 MINI SKID STEER LOADER



NEW 2023 AGT L12 MINI EXCAVATOR, [1 OF 4]

LOADER/ BACKHOES

2015 John Deere 410K 4WD Loader/ Backhoe, Extendahoe, Auxiliary Hydraulics, EROPS, Heat and A/C, 24" Hoe Bucket, Hour Meter Reads: 3600, S/N: 1T0410KXFE275726, Municipality Unit

2013 John Deere 410K 4WD Loader/Backhoe, Extendahoe, Auxiliary Hydraulics, EROPS, Heat and A/C, 24" Hoe Bucket, Hour Meter Reads: 2231, S/N: 1T0410KXVDE247071, Municipality Unit

2014 John Deere 410K 4WD Loader/Backhoe, Extendahoe, Auxiliary Hydraulics, EROPS, Heat and A/C, 24" Hoe Bucket, Hour Meter Reads: 9704, S/N: 1T0410KXPFE260138

2012 John Deere 410K 4WD Loader/Backhoe, Extendahoe, Auxiliary Hydraulics, EROPS, Heat and A/C, 24" Hoe Bucket, Hour Meter Reads: 9463, S/N: 1T0410KXXCE230703

2016 John Deere 310SL 4WD Loader/Backhoe, Extendahoe, Auxiliary Hydraulics, EROPS, Heat and A/C, Front Quick Coupler, Hour Meter Reads: 5563, S/N: 1T0310SLPGF296286

2016 John Deere 310SL 4WD Loader/Backhoe, Extendahoe, Auxiliary Hydraulics, EROPS, Heat and A/C, Front Quick Coupler , Hour Meter Reads: 5964, S/N: 1T0310SLPGF291959

Caterpillar 420D 4WD Loader/Backhoe Erups 2005, Hour Meter Reads: 4355, S/N: CAT042DKFDP24498

SKID STEER LOADERS

2007 Case 440 Skid Steer Loader, Auxiliary Hydraulics, 72" Bucket, Hour Meter Reads: 1836, S/N: N78M462872

2006 Case 440 Skid Steer Loader, Auxiliary Hydraulics, 72" Bucket, Hour Meter Reads: 2472, S/N: N6M427188

Bobcat 864 Crawler Skid Steer Loader, 18" Rubber Tracks, Auxiliary Hydraulics, 78" Bucket, Hour Meter Reads: 4887

2015 Bobcat T650 Crawler Skid Steer Loader, Enclosed Cab w/ Heat & A/C, 2-Speed, 12" Rubber Tracks

Bobcat T595 Crawler Skid Steer Loader, Enclosed Cab w/ Heat & A/C, 2-Speed

Caterpillar 247B Crawler Skid Steer Loader, Turbo

2000 John Deere 240 Skid Steer Loader, Enclosed Cab, Auxiliary Hydraulics, 66" Bucket, Rear Counterweights, Hour Meter Reads: 1265, S/N: KV0240A241513

1998 Bobcat 873 Skid Steer Loader, Auxiliary Hydraulics, 78" Bucket, Hour Meter Reads: 9282, S/N: 51420892

New 2023 AGT LRT23 Mini Skid Steer Loader, 43" Bucket, 7" Rubber Tracks, Auxiliary Hydraulics, Stand-On Platform , Hour Meter Reads: 0, S/N: LRT2323072502H

MINI EXCAVATORS

[9] 2023 New AGT QH12 Mini Excavator, 7" Rubber Tracks, 14" Bucket with Thumb, Auxiliary Hydraulics, 39" Backfill Blade, Hour Meters Read: 0

[4] 2023 New AGT L12 Mini Excavator, 7" Rubber Tracks, 14" Bucket with Thumb, Auxiliary Hydraulics, 37" Backfill Blade, Hour Meters Read: 0

TELESCOPIC FORKLIFT

Lull 1044C-54B Telescopic Forklift, 4WD, 10,000 lb. Capacity, 54' Reach, Hydraulic Stabilizers, Diesel

TRACTOR/ LOADERS

2011 Kubota M9540D 4WD Tractor/Loader, Diesel, 95 HP, Enclosed Cab with Heat and A/C, Hydraulic Shuttleshift, PTO, 3-Point, (3) Sets of Rear Auxiliary Ports, Ride Control, Front Auxiliary Hydraulics, Model LA1353 Loader Arm Assembly, Heated Rear Glass, Hour Meter Reads: 2599, S/N: 85553

WHEEL LOADER

Caterpillar 910 Wheel Loader, S/N: 80U6171



JOHN DEERE 1050 4WD TRACTOR/ LOADER
W/ 2367 HOURS



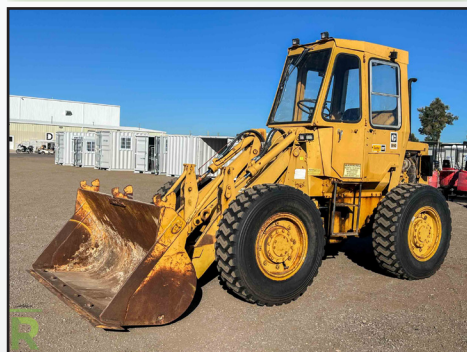
BOBCAT 873 SKID STEER LOADER



2000 JOHN DEERE 240 SKID STEER LOADER



NEW 2023 AGT QH12 MINI EXCAVATOR,
[1 OF 9]



CATERPILLAR 910 WHEEL LOADER



2013 NEW HOLLAND U80C 4WD
TRACTOR/ LOADER, COUNTY UNIT



2012 INTERNATIONAL WORKSTAR 7500
DUMP TRUCK, CITY UNIT



2009 INTERNATIONAL 8600 TRUCK TRACTOR



2000 GMC T6500 INFRARED TRUCK
W/ CATERPILLAR DIESEL



2003 CHEVROLET SILVERADO 2500HD
4WD PICKUP, COUNTY UNIT

TRACTOR/ LOADERS continued

2013 New Holland U80C 4WD Tractor/ Loader, Enclosed Cab w/ Heat & A/C, PTO, 3-Point, Rear Auxiliary Hydraulic Ports, Rhino 9' Blade Attachment, S/N: JJGNU80CADC594001, County Unit

1996 John Deere 5400 4WD Tractor/ Loader, Enclosed Cab w/ Heat & A/C, 3-Point, PTO, Rear Hydraulic Auxiliary Ports

John Deere 1250 4WD Tractor/ Loader, 3-Point, PTO, Rear Hydraulic Auxiliary Ports

John Deere 1050 4WD Tractor/Loader, PTO, 3-Point, Setup For Skid Steer Attachments, Canopy, Turbo, Hour Meter Reads: 2367, S/N: CH1050S011967

John Deere 500 Tractor/Loader, Diesel, 84" Bucket

Many More To Be Added!

DUMP TRUCKS

2007 Freightliner Business Class M2 S/A 4WD Dump Truck, Cummins 8.3L L6, Automatic, Spring Suspension, Kybato Quick Change Bed System, Monroe Stainless Steel Live Bottom V-Box Sander Spreader W/Mag Chloride Tanks & Sprayer Bar, Galion 10' Dump Bed, 11' Flatbed, Monroe 11' Snowplow, 34,000 lb. GVWR, 82K Miles, Hour Meter Reads: 7,306, Municipality Unit

2012 International Workstar 7500 Dump Truck, Maxxforce Diesel, Automatic, Air Ride Suspension, 15' Dump Box w/ Electric Tarp, Monroe 10' Snowplow, Rear Sander/ Spreader, Plastic Holding Tank w/ Rear Spray Bar, 58,180 lb. GVWR, City Unit

TRUCK TRACTORS

2019 Kenworth T680 T/A Truck Tractor, Paccar MX-13 12.9L L6, 12-Speed Automatic, 4-Bag Air Ride, 232" Wheel Base, Falcon Eye Wireless Camera System, 51,000 lb. GVWR, 38,000 lb. Rears, 13,200 lb. Front Axle, All Aluminum Rims

[3] 2013 Mack CHU613 T/A Truck Tractors, MP8-505C 12.8L L6, 18-Speed, 4-Bag Air Ride Suspension, Wet Kit, 220" Wheel Base, 59,220 lb. GVWR, County Units

2009 International 8600 Transtar T/A Truck Tractor, 10.5L L6MaxxForce 11, 10-Speed, 4-Bag Air Ride, 192" Wheel Base, 52,000 lb. GVWR, 40,000 lb. Rears, 12,000 lb. Front Axle, Front Aluminum Rims

WATER TRUCK

2002 International 4900 Water Truck, DT466E, Automatic, Spring Suspension, Colt 2000 Gallon Capacity Tank, Wausau 10' Snowplow, 31,000 Miles, County Unit

STREET SWEEPER

2013 Tymco 600 Street Sweeper, Maxxforce Diesel, Air, Mounted On International Durastar 4300 Chassis, 31,000 lb. GVWR, 43K Miles, County Unit

INFRARED TRUCK

2000 GMC T6500 S/A InfraRed Truck, Caterpillar Diesel, Automatic, Spring Suspension, 6' x 8' Laydown Heating Unit, Asphalt Hot Box

SHUTTLE BUS

2009 GMC C5500 40-Passenger Shuttle Bus, Duramax Diesel, Automatic,

FLATBED TRUCKS

2005 Ford F250 4WD Flatbed Truck, Super Duty, 5.4L, Automatic, Hydraulic Bale Unroller, 8' Bed

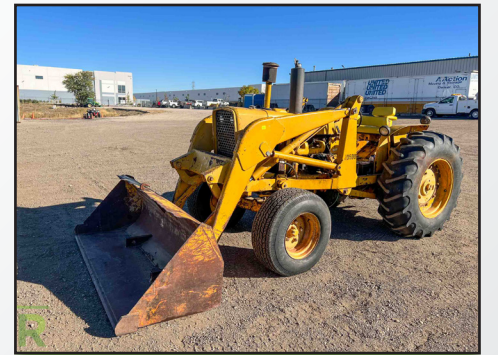
1999 Ford F450 4WD Flatbed Truck, 7.3L Diesel, Automatic, 9' Bed

PICKUP TRUCKS

Great Assortment Of Pickup Trucks Including:

[15] Dodge 2500 & 3500 Pickups

2003 Chevrolet Silverado 2500 HD 4WD Pickup, 6.0L, Automatic, BOSS 8' Super Duty Plow, County Unit



JOHN DEERE 500 TRACTOR/ LOADER



2019 KENWORTH T680 TRUCK TRACTOR
W/ PACCAR MX-13



2002 INTERNATIONAL 4900 S/A WATER
TRUCK W/ 31K MILES, COUNTY UNIT



2009 GMC C5500 40-PASSENGER
SHUTTLE BUS W/ DURAMAX DIESEL



2016 GMC YUKON XL DENALI 4WD SUV



2007 MANAC SBD-40 T/A BELLY DUMP TRAILER, (1 OF 4), COUNTY UNITS



1997 LANDOLL T/A EQUIPMENT TRAILER W/ SLIDING AXLES



T/A OFFICE TRAILER, 40' X 12'



2005 PILGRIM 5TH WHEEL TRAILER



KOHLER 155KW SKID MOUNTED GENERATOR, JOHN DEERE DIESEL, 1136 HOURS

SUV

2016 GMC Yukon XL Denali 4WD SUV, 6.2L, Automatic
END DUMP TRAILER

1994 Load King T/A End Dump Trailer, 32' Length, Frame Type, Spring Suspension, Electric Tarp

BELLY DUMP TRAILERS

2016 CTS BDT-40 T/A Belly Dump Trailer, Single Gate, Air Ride Suspension, Electric Tarp, 68,000 lb. GVWR, County Unit

2009 Manac SBD-40 T/A Belly Dump Trailer, Single Gate, Spring Suspension, Electric Tarp, 68,000 lb. GVWR, County Unit

(4) 2007 CTS BDT-40 T/A Belly Dump Trailers, Single Gate, Spring Suspension, Electric Tarp, 68,000 lb. GVWR, County Units

2006 CTS BDT-40 T/A Belly Dump Trailer, Single Gate, Spring Suspension, Electric Tarp, 68,000 lb. GVWR, County Unit

2005 Manac BDT-40 T/A Belly Dump Trailer, Single Gate, Spring Suspension, Electric Tarp, 68,000 lb. GVWR, County Unit

2005 Manac SBD-240 T/A Belly Dump Trailer, Single Gate, Spring Suspension, Electric Tarp, 80,000 lb. GVWR, County Unit

SLIDING AXLE TRAILER

1997 Landoll T/A Equipment Trailer, Sliding Axles, 52' Overall Length, 102" Wide, Air Ride Suspension, Winch

VAN TRAILERS

2019 Great Dane CCC-3314-22053 T/A Van Trailer, 53' x 102" Air Ride Suspension, 68,000 lb. GVWR, Swing Open Back Doors, Magliner Aluminum Ramp, LED Lights in Trailer

2012 Wabash T/A Van Trailer, 53' x 102", Air Ride Suspension

2008 Great Dane T/A Van Trailer, 53' x 102", Air Ride Suspension

OFFICE TRAILER

1985 Mor T/A Office Trailer, 40' x 12', (2) Side Entry Doors, Heat and A/C, Lighting, Electrical, (2) Aluminum Sets of Stairs

EQUIPMENT TRAILERS

Great Assortment Of Equipment Trailers Including:

2022 Blazer T/A Customized Tilt Bed Equipment Trailer, 20' x 82", Steel Diamond Plate Deck, Hydraulic Tilt, 14,000 lb. GVWR, Remote For Deck, 20,000 LB Electric Winch with Remote, Ball Hitch, Straps

(3) 2002 Superior T/A Equipment Trailers, 7' x 16', 3' Dovetail, Fold Down Ramps, 10,000 lb. GVWR, Ball Hitch, City Units

2006 Superior T/A Equipment Trailer, 8' x 23', Duals, 5' Dovetail, Fold-Down Ramps, 25,900 lb. GVWR, Pintle Hitch, Electric Brakes

5TH WHEEL TRAILERS

2013 Chaparral T/A 5th Wheel Trailer, 36' Length, Sleeps 5 People, (2) Slide Outs, Power Awning, Outdoor Kitchen, Electric Brakes, Spring Suspension, 225/75R15 Tires

2005 Pilgrim T/A 5th Wheel Trailer, Sleeps 4 People, Single Slide Out, Awning, Electric Brakes, Spring Suspension, 225/75R16 Tires

STORAGE CONTAINERS

(3) New 2023 40' Steel Storage Containers, High Cube, (4) Side Door Openings

(3) New 2023 40" Steel Storage Containers, High Cube, (2) Side Door Openings

(4) 40' Steel Storage Containers, High Cube



1994 LOAD KING T/A END DUMP TRAILER, FRAME TYPE



2019 GREAT DANE 53' X 102" VAN TRAILER W/ AIR RIDE SUSPENSION



2013 CHAPARRAL 36' 5TH WHEEL TRAILER



NEW 2023 40' STEEL STORAGE CONTAINER, (1 OF 6)



WACKER 38KW TOWABLE GENERATOR, DIESEL

AUCTION INFORMATION

DATE: Wednesday, November 8th, 2023

ADDRESS: 7500 York Street, Denver, CO 80229

DIRECTIONS: Southbound I-25: Take the 84th Ave. Exit, #219, go east to Washington Ave., then south to 78th Ave., then east to York . then south on York approx. 3 blocks. Northbound I-25: Take the I-76 Exit #216A, then veer left onto the 70th Ave. Exit #216B, then east on 70th Ave. approx. 1.3 miles to York, then 2 blocks north. Westbound on I-270: Take the York St. Exit #1, then proceed north approx. 1 mile. Eastbound on I-76: Take the 74th Ave Exit #8, then go back west approx. 1 mile to York St., then 2 blocks north. Watch for auction signs.

INSPECTION: November 6th & 7th from 8:15am to 4:45pm

Auction location is 7500 York St., Denver, CO 80229.

BUYERS' PREMIUM: All purchases will be assessed a 13% Buyer's Premium. This will be added to the purchase price and is subject to all applicable sales taxes. [3% discount is available - see payment terms].

PAYMENT TERMS: Full payment required by 4:45pm on Monday, November 13th, in cash, certified funds, bank wire transfer, checks approved by Telecheck or accompanied by bank letter, Visa, MasterCard or Discover. If paying in full in cash, cashier check, bank wire transfer or check with a letter of guarantee, a 3% reduction off of the stated buyers' premium is given.

Due to the Coronavirus and the goal to reduce interactions and maintain social distancing. Our Payment terms will be modified going forward as we attempt to have all electronic payments.

- Payments under \$1000 will be automatically charged to the credit card on file, immediately following the auction.
- Payments over \$1000 can be made by bank wire transfer and cash deposits made directly into our account at a Chase Bank.
- Cashier Checks will be accepted in our office, at this time we are not accepting cash in the office
- Payments in bank wire transfer and those directly deposited into our account will receive a 3% reduction off the buyer's premium.

REMOVAL: All purchases must be removed at buyers' expense and responsibility by 4:45 p.m. on Friday, November 17th, 2023. Hours are 8:15am-4:45pm on weekdays. No removal on the weekend. Removal must be scheduled by appointment only through Our Scheduling System. You will receive a link to this in your invoice after the auction.

(4) New Steel Storage Containers, 9'L x 88"W x 8"H, Side Window and Entry Door, Forklift Pockets

(4) New Steel Storage Containers, 8'L x 80"W x 7"H, Side Window and Entry Door, Forklift Pockets

GENERATORS

Kohler Skid Mounted Generator, 155KW, John Deere 6-Cylinder Diesel, 8.1L, 60 Hz, 1800 RPM, Model 150R0ZJ, Hour Meter Reads: 1136, S/N: 379913

2017 Wacker G50 S/A Towable Generator, Pintle Hitch, Hour Meter Reads: 4601, S/N: 24367893

2017 Wacker G50 S/A Towable Generator, 38KW, Diesel, Pintle Hitch, Hour Meter Reads: 4601

LANDSCAPING EQUIPMENT

2015 John Deere 1600 Turbo Series II 4WD Ride-On Batwing Mower, 1.99 L, 11' Mower Deck Wingspan, Hour Meter Reads: 2,528, City Unit

2015 John Deere Z960R RWD Zero-Turn Ride-On Mower, Kawasaki 999 cc, 7-Iron 60" Mower Deck, Hour Meter Reads: 2,011, City Unit

OVER (200) NEW SKID STEER ATTACHMENTS

Consisting of Graders, Buckets, Rototillers, Trenchers, Sweepers, Vibratory Rollers, Forks, Grapple Buckets, Hydraulic Breakers, Brush Cutters, New Tires, Dozer Blades, Tree Pullers, and Much More!

MISCELLANEOUS

(2) New Bastone Portable Warehouse 19' x 20', with Toilet and Shower S/N:

New 2022 Gold Mountain Storage Shelters

New Bastone Portable Toilets w/ Showers

(15) New 27" x 90" Metal Work Tables

New Steelman 10' 30-Drawer Toolboxes

New Self Dumping Trash Hoppers w/ Forklift Pockets

New Wrought Iron Driveway Gate Sets, 20' & 14'

New Fork Extensions

Bunks Of Wood Timbers, Various Sizes

New Plate Compactors and Jumping Jacks

(500) New Steelman PVC Orange Safety Traffic Cones, 28" Height, Black Base

(2) BTI BX10 Hydraulic Breaker Attachments To Fit Loader/Backhoe, Municipality Units

Assorted 3-Point Tractor Attachments and Implements

ADDITIONAL EQUIPMENT WILL BE ADDED TO THE AUCTION

CITY OF LOVELAND VEHICLES AND EQUIPMENT

Wednesday • November 8th
at 2:00pm

200 N Wilson Ave Loveland, CO 80537

Well maintained vehicles and equipment from the City of Loveland selling at public online auction. Auction Includes SUVs, Pickups, Sedans, Utility Trucks, Trailers and Much More



Contact Steve @ 303-289-1600 x 104 if you have quality construction equipment you want to get into our January auction!



2015 JOHN DEERE 1600 TURBO SERIES 4WD RIDE-ON BATWING MOWER, CITY UNIT