



2011 PETERBILT PB320 BUCKET TRUCK W/ ALTEC AH125 BOOM, 39K MILES

WHAT

An auction of heavy construction equipment from companies, local contractors & Government Entities

WHEN

Wednesday, January 17th @ 9:00am

Inspection: January 15th & 16th from 8:15am - 4:45pm

WHERE

7500 York Street, Denver, CO 80229

INTERNET AUCTION



CONSTRUCTION & CONTRACTING EQUIPMENT

WEDNESDAY • January 17th • 9:00 A.M.

Inspection: January 15th & 16th from 8:15 a.m. to 4:45 p.m.



2013 MACK CHU613 TRUCK TRACTOR, COUNTY UNIT



2018 FREIGHTLINER 114SD T/A WATER TRUCK W/ 69K MILES, COUNTY UNIT

SELLING FOR

Metro Water Recovery
Larimer County
City of Golden
City of Aurora
Weld County
El Paso County
City of Thornton
Jefferson County
Xcel Energy

AUCTION INCLUDING:

Motor Graders	Flatbed Trucks
Loader/Backhoes	Water Truck
Hydraulic Excavator	Pickups
Mini Excavators	Lowboy Trailer
Skid Steer Loaders	Equipment Trailers
Truck Tractors	Storage Containers
Tractor/Loaders	Live Bottom Trailers
Bucket Trucks	End Dump Trailers
Crane Truck	New Livestock Panels
Utility Trucks	New Attachments
Dump Trucks	Office Trailers
	Much More!

Roller™



2001 CATERPILLAR 143H VHP 6WD MOTOR GRADER W/ RIPPER, COUNTY UNIT

Construction & Contracting Equipment

7500 York Street • Denver, Colorado 80229

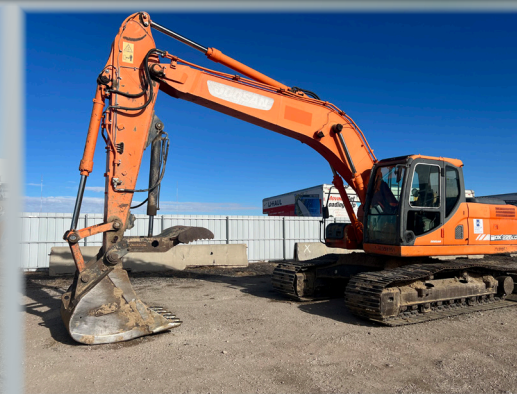
WEDNESDAY • January 17th • 9:00 A.M.

Inspection: January 15th & 16th 8:15 a.m. to 4:45 p.m.

Internet Only Auction • Bidding Available at:
www.RollerAuction.com/construction



2003 JOHN DEERE 310J 4WD
LOADER/BACKHOE, EXTENDAHOE



DOOSAN DX225LC HYDRAULIC
EXCAVATOR



2017 JOHN DEERE 333G CRAWLER SKID
STEER LOADER W/ 3221 HOURS



2012 JOHN DEERE 770G MOTOR GRADER,
[1 OF 2], COUNTY UNIT



JOHN DEERE 772BH 6WD MOTOR
GRADER W/ RIPPER



2011 CASE 580 SUPER N WT 4WD
LOADER/ BACKHOE, EXTENDAHOE, CITY UNIT



2016 JOHN DEERE 310SL 4WD
LOADER/ BACKHOE, EXTENDAHOE



GEHL R220 SKID STEER LOADER

MOTOR GRADERS

2012 John Deere 770G Motor Grader, Cab With Heat And A/C, 16' Moldboard, Front Lift Group, Hour Meter Reads: 14,079, S/N: 1DW770GXTCE643425, County Unit

2012 John Deere 770G Motor Grader, Cab With Heat And A/C, 16' Moldboard, Front Lift Group, Hour Meter Reads: 12,982, S/N: 1DW770GXHCE643419, County Unit

2001 Caterpillar 143H VHP 6WD Motor Grader, Rear Ripper, 14' Moldboard, Front Lift Group, Front Auxiliary Hydraulics, Low Profile Cab, 14.00-R24 Tires, Hour Meter Reads: 5631, S/N: 1AL00886, County Unit

2003 Case 845 Motor Grader, Cummins Diesel, 12' Moldboard, Hour Meter Reads: 3284, S/N: NBZ020067, City Unit

John Deere 772BH 6WD Motor Grader, Rear Ripper, 13 Ft. Moldboard, Hour Meter Reads: 4816, S/N: DW772BH513253

LOADER/ BACKHOES

2016 John Deere 310SL 4WD Loader/ Backhoe, Extendahoe, Auxiliary Hydraulics, EROPS, Heat & A/C, Front Quick Coupler, Hour Meter Reads: 5966, S/N: 1T0310SLPGF291959

2011 John Deere 310J 4WD Loader/ Backhoe, ROPS, Auxiliary Hydraulics, 18" Hoe Bucket, Hour Meter Reads: 3136, S/N: 1T0310JXPA0193206

2011 Case 580 Super N WT 4WD Loader/Backhoe, Extendahoe, EROPS, Heat And A/C, Ride Control, 24" Hoe Bucket, Hour Meter Reads: 2147, S/N: JJGN58WTPBC545312, City Unit

2008 John Deere 310J 4WD Loader/ Backhoe, Extendahoe, Auxiliary Hydraulics, EROPS, Heat & A/C, 16" Hoe Bucket, Hour Meter Reads: 3,406, S/N: T0310JX164437

2008 John Deere 410J 4WD Loader/Backhoe, Extendahoe, Auxiliary Hydraulics, EROPS, Heat & A/C, 24" Hoe Bucket, Hour Meter Reads: 4,597, S/N: T0410JX162279

SKID STEER LOADERS

2017 John Deere 333G Crawler Skid Steer Loader, Enclosed Cab with Heat & A/C, 17.5" Rubber Tracks, High Flow & Auxiliary Hydraulics, 84" Bucket, Hour Meter Reads: 3221, S/N: 1T0333GMPHF311951

2015 John Deere 332E Skid Steer Loader, Enclosed Cab with Heat & A/C, High Flow and Auxiliary Hydraulics, 84" Bucket, Hour Meter Reads: 4125, S/N: 1T0332EKJFE285806

2017 John Deere 324E Skid Steer Loader, Enclosed Cab w/ Heat & A/C, Auxiliary Hydraulics, Hour Meter Reads: 1061, S/N: 1T0324EAKH319645

2015 John Deere 326E Skid Steer Loader, Auxiliary Hydraulics, 78" Bucket, S/N: 1T0326EJCFJ287347

Gehl R220 Skid Steer Loader, Auxiliary Hydraulics, 84" Bucket, S/N: GHLOR220B00174361

Bobcat S130 Skid Steer Loader

2002 Bobcat 863 Skid Steer Loader, Enclosed Cab With A/C, High Flow And Auxiliary Hydraulics, 78" Bucket, Hour Meter Reads: 9496, S/N: 514450666

Scat Trak Skid Steer Loader

New 2023 Roda RD380C Mini Skid Steer Loader, 23 HP, 7" Rubber Tracks, 44" Bucket, Front Auxiliary Hydraulics, Stand-On Platform, Lights, Hour Meter Reads: 0, S/N: RD380223914

New 2023 Roda RD380 Mini Skid Steer Loader, 23 HP, Pneumatic Tires, 46" Bucket, Front Auxiliary Hydraulics, Stand-On Platform, LED Lights, Hour Meter Reads: 0, S/N: RD38023917

New 2023 Roda RD380L Mini Skid Steer, 13.5 HP, 6" Rubber Tracks, 38" Bucket, Front Auxiliary Hydraulics,



2003 CASE 845 MOTOR GRADER, CITY UNIT



2008 JOHN DEERE 410J 4WD
LOADER/ BACKHOE, EXTENDAHOE



2011 JOHN DEERE 310J 4WD
LOADER/ BACKHOE



2015 JOHN DEERE 326E SKID STEER LOADER



BOBCAT 863 SKID STEER LOADER



2015 JOHN DEERE 332E SKID STEER LOADER



2005 CATERPILLAR CP563E RIDE-ON
SHEEPSFOOT COMPACTOR



VIEW OF NEW 2023 LANTY MINI EXCAVATORS



JOHN DEERE 500 TRACTOR/ LOADER



CATERPILLAR MC30 ELECTRIC FORKLIFT
W/ CHARGER, COUNTY UNIT

SKID STEER LOADERS continued

Stand-On Platform, Lights, Hour Meter Reads: 0, S/N: RD380L23104

New 2023 Roda RD360 Mini Skid Steer Loader, 13.5 HP, Pneumatic Tires, 42" Bucket, Front Auxiliary Hydraulics, Stand-On Platform, Lights, Hour Meter Reads: 0, S/N: RD360231026

Many More To Be Added!

COMPACTION EQUIPMENT

2006 Caterpillar CS563E Ride-On Smooth Drum Vibratory Roller, Enclosed Cab With Heat And A/C, 84" Drum, Hour Meter Reads: 6131, S/N: CATCS563JCN01331, County Unit

2005 Caterpillar CP-563E Ride-On Sheepsfoot Compactor, 84" Drum, 96" Front Blade, ROPS, Hour Meter Reads: 936, S/N: CATCP563VCNT00897

New 2023 Fland FL850 Ride-On Smooth Drum Roller, 420 CC, 28" Front Drum, 18" Rear Drum, Hour Meter Reads: 0, S/N: FL850231002

HYDRAULIC EXCAVATOR

Doosan DX225LC Hydraulic Excavator, Cab w/ A/C & Heat, 32" TBG, 48" Bucket w/ Hydraulic Thumb Attachment, Hour Meter Reads: 6167, S/N: DHKCEBADTC0006908

MINI EXCAVATORS

[2] 2023 CE Industry STE35SR Mini Excavators, Yanmar Diesel, Enclosed Cab, 60" Backfill Blade, 12" Rubber Tracks, 18" Bucket With Thumb, Radio, Touch Panel Monitor, Hour Meter Reads: 0, S/N: E02FYNP0003669, E02FYNP0004049

[3] New 2023 Lantty LAT-13S Mini Excavators, 13.5 HP, Enclosed Cab, 7" Rubber Tracks, 36" Backfill Blade, 16" Bucket With Thumb, Auxiliary Hydraulics, Hour Meters Reads: 0

[4] New 2023 Lantty LAT-12S Mini Excavators, 13.5 HP, 7" Rubber Tracks, 36" Backfill Blade, 16" Bucket With Thumb, Auxiliary Hydraulics, Hour Meters Reads: 0

New 2023 Lantty LAT-120 Mini Excavator, 13.5 HP, 7" Rubber Tracks, 36" Backfill Blade, 16" Bucket With Thumb, Auxiliary Hydraulics, Hour Meter Reads: 0

FORKLIFT

Caterpillar MC30 Electric Forklift, 3000 LB. Capacity, 156" Lift Height, Side Shift, Solid Tires, 48" Forks, With Kodiak Multi Voltage Charger, Hour Meter Reads: 5277, S/N: 41W02520, County Unit

TRACTORS

Trackless MT5T Articulating 4WD Tractor, Series V, Enclosed Cab With Heat And A/C, 60" Broom Attachment, 57" Snowplow Attachment, Front Hydraulics, Hour Meter Reads: 2897, S/N: 872, City Unit

Branson 3510i 4WD Tractor/ Loader, PTO, 3-Point, Canopy, Diesel, Hour Meter Reads: 1691, S/N: CN0P00021

John Deere 500 Tractor/Loader, 84" Bucket, Diesel

BUCKET TRUCKS

2011 Peterbilt PB320 T/A 6X6 Bucket Truck, ISM 11.9L L6, Automatic, Spring Suspension, 3rd Lift Axle, Altec AH125 Boom, 120' Maximum Height, 2,100 lb. Maximum Capacity, Front & Rear Stabilizers, 68,000 lb. GVWR, Rear Braden Winch, 39K Miles

2016 Freightliner M2 4WD Bucket Truck, 8.9L L6, Automatic, Dually, Spring Suspension, Terex Hi-Ranger 5TC-52 Boom, 700 Lb. Max Platform Capacity, 52' Max Height

2012 International 4300 S/A Bucket Truck, 7.6L, Automatic, Altec AA755MH Boom, 700 Lb. Max Capacity, 55' Max Height, Front & Rear Stabilizers



2006 CATERPILLAR CS563E SMOOTH
DRUM ROLLER, COUNTY UNIT



NEW 2023 CE STE35SR MINI EXCAVATOR
W/ ENCLOSED CAB, [1 OF 2]



TRACKLESS MT5T ARTICULATING 4WD
TRACTOR W/ 2897 HOURS, CITY UNIT



BRANSON 3510i 4WD TRACTOR/ LOADER



2012 INTERNATIONAL 4300 BUCKET
TRUCK W/ ALTEC 55 FT. BOOM



2012 RAM 5500 HD 4WD BUCKET TRUCK
W/ TEREX 35 FT. BOOM



2009 INTERNATIONAL WORKSTAR 7600
DUMP TRUCK W/ PLOW, CITY UNIT



2005 INTERNATIONAL 4400 CRANE
TRUCK W/ TEREX BOOM



2013 JEEP WRANGLER SAHARA,
4WD, W/ BOSS V-PLOW



2020 PJ 40' GOOSENECK EQUIPMENT TRAILER

BUCKET TRUCKS continued

2009 International 4400 S/A Bucket Truck, 7.6L L6, Automatic, Altec AA55E Boom, 55' Max Height, 700 Lb. Max Capacity, Front & Rear Stabilizers, 33,000 lb. GVWR

2012 Ram 5500 Heavy Duty 4WD Bucket Truck, 6.7L Diesel, Automatic, Dually, Terex Hi-Ranger HR37M Bucket, 37' Max Platform Height, 350 Lb. Max Capacity, Front Stabilizers

2010 Dodge Ram 5500 Heavy Duty 4WD Bucket Truck, 6.7L Diesel, Automatic, Dually, Altec AT37-G Boom, 350 Lb. Max Capacity, 37.5' Max Height

DUMP TRUCK

2009 International 7600 Work Star 6x4 Dump Truck, 10.8L L6, Automatic, Hendrickson Rubber Pad Suspension, 14' Dump Box w/ Electric Tarp, 11' Articulating Plow, Swenson Live Bottom V-Box Sander Spreader W/(2) Mag Chloride Tanks, Command All Controller, w/ Tailgate, 66,000 lb. GVWR, City Unit

TRUCK TRACTORS

2013 Mack CHU613 T/A Truck Tractor, MP8-505C 12.8L, 18-Speed, 4-Bag Air Ride Suspension, Wet Kit, 220" Wheel Base, 59,220 lb. GVWR, County Unit

1997 GMC C6500 S/A Cab & Chassis, Caterpillar Diesel, Eaton Manual Transmission, 189" Wheel Base, 33,000 lb. GVWR

1996 GMC Top Kick S/A Cab & Chassis, Caterpillar 3116, 6-Speed, 162" Wheel Base

WATER TRUCK

2018 Freightliner 114SD T/A Water Truck, CNG, Automatic, Air Ride Suspension, Klein K400 Tank, 4000 Gallon Capacity, Front, Rear and Both Sides Discharge, 64,000 lb. GVWR, 46,000 lb. Rear, 18,000 lb. Front Axle, 69K Miles, County Unit

DIGGER DERRICK TRUCK

2006 International 4400 S/A Digger Derrick Truck, 7.6L, Automatic, Terex Telelect Commander C4045 Digger Derrick, Front & Rear Stabilizers

CRANE TRUCK

2005 International 4400 S/A Crane Truck, 7.6L, Automatic, Terex Commander C4045 Crane, 27,080 Lb. Max Capacity, 29' Max Height, Front & Rear Stabilizers

PICKUP TRUCKS

A Great Selection Of Pickup Trucks: Including:

2012 Ford F150 XL 4WD Super Cab Pickup, 5.0L, Automatic

2010 Ford F150 XL 4WD Super Cab Pickup, 5.4L, Automatic

2010 Dodge Dakota 4WD Super Cab Pickup, 4.7L, Automatic

2005 Ford F250 Super Duty XL 4WD Pickup, 5.4L, Automatic

Many More To Be Added!

UTILITY TRUCKS

A Great Selection Of Utility Trucks: Including:

2013 Ford F350 Super Duty XL 4WD Utility Truck, 6.2L, Automatic

(2) 2012 Ford F350 Super Duty XL 4WD Utility Trucks, 6.2L, Automatic

2011 Ford F350 Super Duty XL 4WD Crew Cab Utility Truck, 6.2L, Automatic

2008 Ford F450 Super Duty XL 4WD Utility Truck, 6.8L, Automatic, Ventura ET8K 3,200 Lb. Capacity Crane

2008 Ford F550 Super Duty XL 4WD Utility Truck, 6.8L, Automatic

(2) 2007 Ford F450 Super Duty XL RWD Utility Trucks,



2010 DODGE RAM 5500 HD BUCKET
TRUCK W/ TEREX 35 FT. BOOM



2006 INTERNATIONAL 4400
DIGGER DERRICK TRUCK W/ TEREX BOOM



2012 FORD F350XL SUPER DUTY
4WD UTILITY TRUCK



ROCKING CHAIR T/A 20' EQUIPMENT TRAILER



FRUEHAUF 45' X 96' FLATBED TRAILER



LOAD KING TRI-AXLE
50-TON LOWBOY TRAILER



28 FT. X 64 FT. DOUBLE WIDE
MODULAR TRAILER, COUNTY UNIT



2012 TRAIL KING OLB-236 LIVE BOTTOM
TRAILER, (1 OF 2), MUNICIPALITY UNIT



NEW 2023 40' STEEL STORAGE
CONTAINER, HIGH CUBE



CLUB CAR CARRYALL 252 UTILITY CART

UTILITY TRUCKS continued

6.8L, Automatic, Ventura ET6KR Crane, 2,200 Lb. Max Capacity, Honda EM5000SX Gas Generator

2007 Ford F350 Super Duty XL Utility Truck, 5.4L, Automatic

2002 Ford F350 Super Duty XL 4WD Super Cab Utility Truck, 5.4L, Automatic

Many More To Be Added!

SUV'S, CARS, VAN

2013 Jeep Wrangler Sahara, 4WD, Automatic, 2-Door, 3.6L, Boss 78" 6-Way V-Plow

2010 Ford Escape 4WD SUV, 2.5L, Automatic

2013 Chevrolet Volt, 1.4L, Automatic

2016 Ford Fusion SE, 2.5L, Automatic

2008 Ford E350 Super Duty Utility Van, 5.4L, Automatic
MODULAR TRAILER

2002 UNI Double Wide Office Trailer, 28' x 64', CWT/ CAP/ SIZE: 170, Electric HVAC, (Located at Fort Carson, CO.). County Unit

LOWBOY TRAILER

1993 Load King Tri-Axle Lowboy Trailer, Detachable Gooseneck, 50-Ton Capacity, Pony Motor, 25' Well, 102" Wide, Air Ride Suspension

LIVE BOTTOM TRAILERS

2013 Trail King OLB-236 T/A Live Bottom Trailer, Air Ride Suspension, Electric Tarp, 81,170 lb. GVWR, Municipality Unit

2012 Trail King OLB-236 T/A Live Bottom Trailer, Air Ride Suspension, Electric Tarp, 81,170 lb. GVWR, Municipality Unit

FLATBED TRAILER

1990 Fruehauf T/A Flatbed Trailer, 45' x 96", Spring Suspension, 91,000 lb. GVWR

END DUMP TRAILERS

1980 Hobbs T/A Aluminum End Dump Trailer, Frame Type, 33' Length, Spring Suspension, 70,000 lb. GVWR

1997 Trail King T/A Rock End Dump Trailer, Frameless, 32' Length, Spring Suspension

EQUIPMENT TRAILERS

A Great Selection Of Equipment Trailers: Including:

2020 PJ T/A Gooseneck Equipment Trailer, Duals, 8' x 40' Deck, 25,900 lb. GVWR

2023 Homemade Gooseneck T/A Hydraulic Dump Trailer, 87" x 16' Deck, (2) 7000 lb. Axles

2023 Homemade T/A Gooseneck Equipment Trailer, 8' x 24' Deck, Ramps, (2) 7000 LB Axles

2018 Big Tex T/A Gooseneck Equipment Trailer, 40' x 102" Deck, 25,900 lb. GVWR

2005 Towmaster T/A Equipment Trailer, 18' x 7' Deck, Fold Down Ramps 18,300 lb. GVWR, Ball Hitch

2011 DCT T/A Equipment Trailer, 20' x 83" Deck, Ramps, 14,000 lb. GVWR, Ball Hitch

2002 Rocking Chair T/A Equipment Trailer, Duals, 100" x 20' Deck, 6' Dovetail, Fold Down Ramps, Pintle Hitch

1999 Trail King TK32-2400 T/A Equipment Trailer, Duals, 8' x 19' Deck, 5' Dovetail, Air Brakes, Fold Down Ramps, Air Brakes, Pintle Hitch

2013 Maxey T/A Tilt Deck Equipment Trailer, 80" x 18' Deck, Dovetail, 13,350 lb. GVWR, Pintle Hitch

1990 Taylor S/A Equipment Trailer, 6' x 12' Deck, Pintle Hitch

Many More To Be Added!



VIEW OF MOWER DECKS TO FIT
SKID STEER LOADER



1997 TRAIL KING 32 FT. ROCK TRAILER



HOBBS 33 FT. ALUMINUM END
DUMP TRAILER, FRAME TYPE



NEW BASTONE PORTABLE TOILETS



NEW WOOD TIMBERS



NEW TOUGH RANCH CATTLE SQUEEZE CHUTE



PARTIAL VIEW OF NEW LIVESTOCK PANELS



NEW GRAPPLE BUCKETS TO FIT SKID STEER LOADER



CONCRETE CURB AND GUTTER FORMS



NEW STORAGE SHELTERS

STEEL STORAGE CONTAINERS

(2) New 2023 40' Steel Storage Containers, High Cube,
(2) Double Door Side Openings

(8) 40' Steel Storage Containers, High Cube

New Steel Storage Container, 9' L x 88" W x 99" H, Side Entry Door, Side Window, Forklift Pockets

New Steel Storage Container, 8' L x 80" W x 88" H, Side Entry Door, Side Window, Forklift Pockets

NEW LIVESTOCK PANELS AND GATES

New Tough Ranch CC002 Cattle Squeeze Chute, 12' L x 41" W x 80" H

New Tough Ranch CC001 Cattle Squeeze Chute, 8-1/2' L x 41" W x 84" H

(48) New BYT Livestock Panels, Powder Coated, Super Duty Magnum, 9-1/2' L x 60" H, 2-3/8" Tubing

(48) New BYT Livestock Panels, Powder Coated, Super Duty Magnum, 7-1/2' L x 60" H, 2-3/8" Tubing

(32) New BYT Livestock Heavy Duty Gates, 12' L x 48" H, 2-3/8" Tubing

(48) New BYT Ranch Gates, 12' L x 48" H, 1-5/8" Tubing

(96) New BYT Livestock Ranch Gates, 10' L x 48" H, 1-5/8" Tubing

(70) New BYT Livestock Panels, 12' L x 5' H, 1-5/8" Tubing

(70) New BYT Livestock Panels, 9-1/2' L x 5' H, 1-5/8" Tubing

(196) New BYT Livestock Panels, 9-1/2' L x 5' H, 1-1/4" Tubing

(82) New BYT Sheep Mesh Panels, 9-1/2' L x 52" H, 1-1/4" Tubing

(182) New BYT Sheep Mesh Panels, 7' L x 52" H, 1-1/4" Tubing

(20) New BYT Sheep Panels, 7' L x 52" H, 1-1/4" Tubing

OVER (100) NEW SKID STEER ATTACHMENTS

New Snow Pushers To Fit Skid Steer Loaders, 8' & 10'

New Hydraulic Posthole Digging Attachments To Fit Skid Steer Loader with 12" and 18" Auger Bits

New 76" Hydraulic Skeleton Grapple Buckets To Fit Skid Steer Loader, Single Cylinder

New 48" Fork Attachments To Fit Skid Steer Loader

New Hydraulic Tree Pulling Attachments To Fit Skid Steer Loader

New Hydraulic Dozer Blades To Fit Skid Steer Loader

New Hydraulic 72" Brush Cutting Attachments To Fit Skid Steer Loader

New Skid Steer Buckets & Rock Buckets, Various Sizes

New 72" Hydraulic Rototiller Attachments To Fit Skid Steer Loader

New Hydraulic Cement Mixer Attachments To Fit Skid Steer Loader

New Hydraulic Breaker Attachments To Fit Skid Steer Loader

New Landscaping & Root Rakes To Fit Skid Steer Loader

New Hydraulic 72" Box Broom/ Sweeper Attachments To Fit Skid Steer Loader

New Hydraulic 72' Hydraulic Angle Broom Attachments To Fit Skid Steer Loader

New Hydraulic Trencher Attachments To Fit Skid Steer Loader

NEW TIRES

(5) Sets of (4) New Forerunner 12-16.5 Skid Steer Tires w/ Wheels

(4) Sets of (4) New Forerunner 10-16.5 Skid Steer Tires with Wheels



PARTIAL VIEW OF NEW LIVESTOCK PANELS



NEW SNOW PUSHER ATTACHMENT TO FIT SKID STEER LOADER, [1 OF 15]



NEW FORK ATTACHMENTS TO FIT SKID STEER LOADER



NEW SKID STEER BUCKETS



NEW SKID STEER TIRES

AUCTION INFORMATION

DATE: Wednesday, January 17th, 2024

ADDRESS: 7500 York Street, Denver, CO 80229

DIRECTIONS: Southbound I-25: Take the 84th Ave. Exit, #219, go east to Washington Ave., then south to 78th Ave., then east to York . then south on York approx. 3 blocks. Northbound I-25: Take the I-76 Exit #216A, then veer left onto the 70th Ave. Exit #216B, then east on 70th Ave. approx. 1.3 miles to York, then 2 blocks north. Westbound on I-270: Take the York St. Exit #1, then proceed north approx. 1 mile. Eastbound on I-76: Take the 74th Ave Exit #8, then go back west approx. 1 mile to York St., then 2 blocks north. Watch for auction signs.

INSPECTION: January 15th & 16th from 8:15am to 4:45pm
Auction location is 7500 York St., Denver, CO 80229.

BUYERS' PREMIUM: All purchases will be assessed a 13% Buyer's Premium. This will be added to the purchase price and is subject to all applicable sales taxes. [3% discount is available - see payment terms].

PAYMENT TERMS: Full payment required by 4:45pm on Friday, January 19th, 2024 in cash, certified funds, bank wire transfer, checks approved by Telecheck or accompanied by bank letter, Visa, MasterCard or Discover. If paying in full in cash, cashier check, bank wire transfer or check with a letter of guarantee, a 3% reduction off of the stated buyers' premium is given.

Due to the Coronavirus and the goal to reduce interactions and maintain social distancing. Our Payment terms will be modified going forward as we attempt to have all electronic payments.

- Payments under \$1000 will be automatically charged to the credit card on file, immediately following the auction.
- Payments over \$1000 can be made by bank wire transfer and cash deposits made directly into our account at a Chase Bank.
- Cashier Checks will be accepted in our office, at this time we are not accepting cash in the office
- Payments in bank wire transfer and those directly deposited into our account will receive a 3% reduction off the buyer's premium.

REMOVAL: All purchases must be removed at buyers' expense and responsibility by 4:45 p.m. on Friday, January 26th, 2024. Hours are 8:15am-4:45pm on weekdays. No removal on the weekend. Removal must be scheduled by appointment only through Our Scheduling System. You will receive a link to this in your invoice after the auction.

NEW SKID STEER TIRES

(5) Sets of (4) New Forerunner 12-16.5 Skid Steer Tires

(5) Sets of (4) New Forerunner 10-16.5 Skid Steer Tires

New Sets Of Radial Trailer Tires

MISCELLANEOUS

New 2023 Roda RD50 Walk-Behind Hydraulic Dumper, 6.5 HP, With 31" Scoop Bucket, 7" Rubber Tracks, Stand-On Platform, Hour Meter Reads: 0, S/N: RD5023941

New Fland FL750 Crawler Lawnmower, 7.5 HP, 196 CC Gasoline, 6" Rubber Tracks

New 2023 Fland FL-2 Ride-On Power Trowel, 13 HP, , 66" Wide

New 2023 36" Power Trowel, 196 CC

2012 Polaris Ranger XP 800 4WD UTV, 760cc, Automatic, Enclosed Cab, Manual Dump Bed

Club Car Carryall 252 RWD Utility Cart w/ Hydraulic Dump Bed

Approximately (400) 10' x 12" Curb and Gutter Forms

(4) New Magnum 4000 Hot Water Pressure Washers, Gas, Diesel Heater, Hose & Wand



NEW STAINLESS STEEL TOOLBOXES

EZ-GO 4-Passenger Electric Golf Cart

2002 ADDCO Towable Message Board, Solar Powered With Batteries

Towable Air Compressor, 4-Cylinder Diesel, S/A, Pintle Hitch

New 2023 Gold Mountain Storage Shelters

New Bastone Portable Toilets w/ Showers

(15) New 27" x 90" Metal Work Tables

New Steelman 10' 30-Drawer Toolboxes

New Self Dumping Trash Hoppers w/ Forklift Pockets

New Wrought Iron Driveway Gate Sets, 20' & 14'

New Fork Extensions

Bunks Of Wood Timbers, Various Sizes

New Plate Compactors and Jumping Jacks

Ray-Tech Triple Tech 78 Infrared Unit To Fit Skid Steer Loader, With (2) Propane Attaching Units

(2) John Deere Front Scarifier Attachments To Fit Motor Grader

18' Steel Flatbed Dump Bed With Hoist & Pump, 102" Wide

8' x 16' Trench Box w/ (3) Spreader Bars

Land Pride OS1572 6' Overseeder, 3-PT

New Holland HH755 Hydraulic Breaker Attachment To Fit Skid Steer Loader

ADDITIONAL EQUIPMENT WILL BE ADDED TO THE AUCTION

VEHICLES, CONTRACTOR & RENTAL YARD EQUIPMENT

Tuesday • January 23rd
at 8:30am

Inspection: January 22nd
from 8:15am - 4:45pm

The auction typically includes: vehicles, trailers, lawn and garden equipment, attachments, rental yard equipment, shop equipment, concrete equipment, generators, toolboxes, gang boxes, ladders and more!



Contact Steve @ 303-289-1600 x 104 if you have quality construction equipment you want to get into our March auction!