

PRESORTED
FIRST CLASS MAIL
U.S. POSTAGE
PAID
DENVER CO
PERMIT # 4033



2015 JET T/A SIDE DUMP TRAILER W/AIR RIDE

WHAT
An auction of heavy construction equipment from companies, local contractors & Government Entities

WHEN
Wednesday, January 19th @ 9:00am

Inspection: January 17th & 18th
from 8:15am - 4:45pm

WHERE
7500 York Street, Denver, CO 80229

INTERNET AUCTION



HEAVY CONSTRUCTION & CONTRACTING EQUIPMENT

WEDNESDAY • January 19th • 9:00 A.M.

Inspection: January 17th & 18th from 8:15 a.m. to 4:45 p.m.



2012 ELGIN EAGLE STREET SWEEPER, COUNTY UNIT



2006 INTERNATIONAL 4400 BUCKET TRUCK W/ TEREX 52 FT. BOOM

SELLING FOR

Weld County
Adams County
Douglas County
Local Banks
Xcel Energy

Plus other contractors

AUCTION INCLUDING:
Motor Graders, Loader/
Backhoes, Hydraulic Excavators,
Skid Steer Loaders, Snowcat,
Compaction Equipment, Truck
Tractors, Telescopic Forklift,
Forklifts, Side Dumps, Dump
Trucks, Utility Trucks, End
Dumps, Flatbed Trucks, Bucket
Trucks, Equipment Trailers,
Screening Plant, High Reach
Equipment, Rock Drill, Storage
Containers, New Attachments,
Pickups & More!

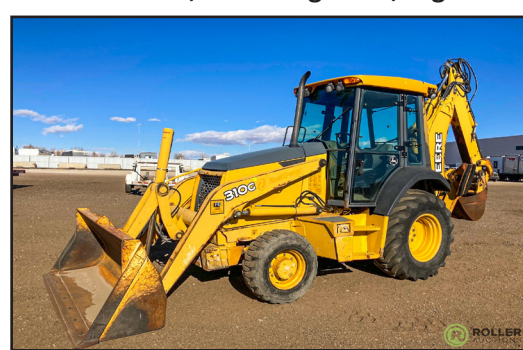
Heavy Construction & Contracting Equipment



2006 FAB-TEC 6X20 PORTABLE SCREENING PLANT, 3-DECK, COUNTY UNIT

Internet Only Auction • Bidding Available at:
www.RollerAuction.com/construction

Motor Graders, Loader/ Backhoes, Hydraulic Excavators, Skid Steer Loaders, Snowcat, Compaction Equipment, Truck Tractors, Telescopic Forklift, Forklifts, Side Dumps, Dump Trucks, Utility Trucks, End Dumps, Flatbed Trucks, Bucket Trucks, Equipment Trailers, Screening Plant, High Reach Equipment, Rock Drill, Storage Containers, New Attachments, Pickups & More!



2006 JOHN DEERE 310G 4WD LOADER/ BACKHOE, EXTENDAHOE



2007 DYNAPAC CA602D VIBRATORY ROLLER, COUNTY UNIT



2009 PISTEN BULLY SCOUT SNOWCAT

Roller & Associates, Inc.

7500 York Street • Denver, Colorado 80229 • (303) 289-1600 • www.rollerauction.com

Roller & Associates, Inc.

7500 York Street • Denver, Colorado 80229 • (303) 289-1600 • www.rollerauction.com



2006 FAB-TEC 6X20 PORTABLE SCREENING PLANT, 3-DECK, COUNTY UNIT



2011 JOHN DEERE 310SJ 4WD LOADER/BACKHOE, EXTENDAHOE



2006 JOHN DEERE 35D MINI EXCAVATOR W/ 1651 HOURS



2005 JOHN DEERE 27C MINI EXCAVATOR W/ 1970 HOURS



HYSTER 15,000 LB. DIESEL FORKLIFT W/ ENCLOSED CAB

PORTABLE SCREENING PLANT

2006 Fab-Tec 6x20 Portable Screening Plant, T/A Chassis, 3-Decks, Spring Suspension, County Unit, S/N: P620332707

SNOWCAT

2009 Pisten Bully Scout Snowcat, V-6 Gasoline, Enclosed Cab with Heat, 4-Door, Rear Seat, 2-Bucket Seats, 33" Tracks, 99" Front Hydraulic 6-Way Blade, Warn Rear Winch, S/N: WKU5856SG9R010064

LOADER/BACKHOES

2011 John Deere 310SJ 4WD Loader/ Backhoe, Extendahoe, Auxiliary Hydraulics, 4-in-1 Front Bucket, EROPS, Heat & A/C, Hour Meter Reads: 3238, S/N: 1T0310SJAA0193675

2006 John Deere 310G Loader/Backhoe, Extendahoe, Auxiliary Hydraulics, EROPS, A/C and Heat, 18" Hoe Bucket, Hour Meter Reads: 3,123, S/N: T0310GX957369

John Deere 310E 4WD Loader/ Backhoe, Auxiliary Hydraulics, EROPS, Heat, 24" Hoe Bucket, S/N: T0310EX887036

MINI EXCAVATORS

2006 John Deere 35D Mini Excavator, Enclosed Cab, Heat & A/C, 12" Rubber Tracks, 68" Backfill Blade, 16" Bucket with Thumb, Auxiliary Hydraulics, Hour Meter Reads: 1651, S/N: FF035DX235262

2005 John Deere 27C Mini Excavator, Enclosed Cab, 12" Rubber Tracks, 60" Backfill Blade, Auxiliary Hydraulics, 12" Bucket with Thumb, Hour Meter Reads: 1970, S/N: FF027CX222078

Takeuchi TB138FR Mini Excavator, Enclosed Cab with Heat & A/C, Auxiliary Hydraulics, 14" Rubber Tracks, 68" Backfill Blade, 24" Bucket with Thumb, City Unit, Hour Meter Reads: 1789, S/N: 138200625

2021 Unused Agrotk YM12 Mini Excavator, Gas Engine, 7" Rubber Tracks, 36" Backfill Blade, 16" Bucket, Hour Meter Reads: 0, S/N: YM1221101801

MINI CRANE

2007 S.D.P. EZ Hauler 3800 Mini Crane, Yanmar Diesel, 12" Rubber Tracks, 5-Stage Boom, 360 Degree Rotation, Hydraulic Stabilizers, w/ Posthole Digging Attachment, Bucket, Winch, Pole Grabber & T/A Equipment Trailer, Hour Meter Reads: 424, S/N: 10195888928

TELESCOPIC FORKLIFT

2007 JLG G10-55A 4WD Telescopic Forklift, John Deere Diesel, 10,000 lb. Capacity, 55" Reach, 4-Stage Boom, Front Hydraulic Stabilizers, Enclosed Cab, Heat & A/C, Front Auxiliary Hydraulics, 60" Forks, Hour Meter Reads: 2380, S/N: 0160028736

HIGH REACH EQUIPMENT

2007 JLG 660SJ 4WD Boomlift, Deutz 4-Cylinder Diesel, 66' Platform Height, 3-Stage Boom, 3' x 8' Basket, 500 lb. Capacity, Hour Meter Reads: 2701, S/N: 0300106787

FORKLIFTS

Hyster H155XL Forklift, Perkins Diesel Engine, 15,000 lb. Capacity, 220" Lift Height, 3-Stage, Side Shift, Fork Positioning, Enclosed Cab, 8' Forks, Pneumatic Tires, Front Dual Wheels, Hour Meter Reads: 8725, S/N: F006A10178V

Caterpillar V90F Gas Forklift, 10,000 lb. Capacity, 3-Stage Mast, Enclosed Cab, Pneumatic Tires, Dual Front Wheels, 48" Forks, Hour Meter Reads: 4148, S/N: 77X02293



2009 PISTEN BULLY SCOUT SNOWCAT



JOHN DEERE 310E 4WD LOADER/ BACKHOE



2021 AGROTK YM 12 UNUSED MINI EXCAVATOR



2007 JLG G10-55A 4WD TELESCOPIC FORKLIFT



2007 JLG 660SJ 4WD BOOMLIFT, DIESEL



NEW HOLLAND 7635 4WD AGRICULTURAL TRACTOR, MUNICIPALITY UNIT



HYSTER C530A 9-WHEEL PNEUMATIC ROLLER



2012 BOBCAT MT55 MINI SKID STEER LOADER



BOBCAT 742 SKID STEER LOADER



2007 INTERNATIONAL 4400 S/A DUMP TRUCK W/ DT466

AGRICULTURAL TRACTOR

New Holland 7635 4WD Agricultural Tractor, Enclosed Cab with Heat and A/C, PTO, 3-Pt, Rear Hydraulic Auxiliary Ports, Front Counterweights, Hour Meter Reads: 1957, Municipality Unit, S/N: 001111891

COMPACTION EQUIPMENT

2007 Dynapac CA602D Ride-On Vibratory Roller, Cummins Diesel, 84" Front Drum, Enclosed Cab with Heat and A/C, Hour Meter Reads: 6947, County Unit, S/N: 71421157

2008 Caterpillar PS150C 9-Wheel Pneumatic Roller, Canopy, Hour Meter Reads: 835, County Unit, S/N: CATPS150VFP500792

Hyster C530A 9-Wheel Pneumatic Roller, 4-Cylinder Diesel, Hour Meter Reads: 6296, S/N: A91C3586F

MOTOR GRADER

2008 John Deere 772D 6WD Motor Grader, AC, Heat, Rear Ripper, 14' Moldboard, Front Scarifier, 14.00-R24 Tires. S/N: DW772DX620582 New Engine with Warranty

Allis Chalmers M100B Motor Grader, 6-Cylinder Diesel, 14' Moldboard, Hour Meter Reads: 3557, S/N: 5750

SKID STEER LOADERS

2004 John Deere 250 Skid Steer Loader, Series II, Enclosed Cab, Auxiliary Hydraulics, 72" Bucket, Rear Counterweights, Hour Meter Reads: 581, S/N: T00250A935626

2006 John Deere 320 Skid Steer Loader

Bobcat 742 Skid Steer Loader, Gas Engine

Gehl 4500 Skid Steer Loader, Gas, 66" Bucket, Hour Meter Reads: 5670

2012 Bobcat MT55 Mini Skid Steer Loader, Rubber Tracks, Diesel, Auxiliary Hydraulics

ROCK DRILL

1998 Tamrock Pantera 900 Crawler Rock Drill, Equipped with HL100 Drifter

STREET SWEEPER

2012 Elgin Eagle Street Sweeper, Mounted On Autocar Xpert Chassis, Series F, S/N: F2963D, John Deere Rear Diesel, Cummins ISB Front Diesel, Dual Steer, Dual Gutter Brooms, 3626 Front Engine Hours, 3302 Rear Engine Hours, County Unit

DUMP TRUCKS

2007 International 4400 S/A Dump Truck, DT466, Automatic, Spring Suspension, 10' Dump Box, With Tarp

2000 International 2674 T/A Dump Truck, Cummins 400 HP, 18-Speed, Hendrickson Rubber Pad Suspension, 15' Dump Box with Tarp, 58,000 lb. GVWR, 40,000 lb. Rears, 18,000 lb. Front Axle

2000 International 4700 S/A Stakebody Dump Truck, T444E, 5+2 Speed, Spring Suspension, 20' Bed, County Unit

1994 Ford L8000 S/A Dump Truck, 6-Cylinder Diesel, 9-Speed, Spring Suspension, 12' Dump Box, 40,500 lb. GVWR, Pintle Hitch

2003 Ford F350XL Landscape Dump Truck, 6.8L, Automatic, 8' Dump Box, Hydraulic Liftgate, Dually

DIGGER DERRICK TRUCKS

2009 International 7600 T/A 6x4 Digger Derrick Truck, 10.8L, Automatic, Spring Suspension, Altec Industries D3050ATR Boom, 30,000 lb. Capacity

2001 International 4800 S/A Digger Derrick Truck, DT466E, 6-Speed, Spring Suspension, Terex Boom, 12' Utility Box, 33,000 lb. GVWR, Pintle Hitch



2008 CATERPILLAR PS150C 9-WHEEL PNEUMATIC ROLLER, COUNTY UNIT



2008 JOHN DEERE 772D 6WD MOTOR GRADER W/ BRAND NEW ENGINE



2006 JOHN DEERE 320 SKID STEER LOADER



2000 INTERNATIONAL 2674 T/A DUMP TRUCK W/ CUMMINS 400 HP



2009 INTERNATIONAL 7600 DIGGER DERRICK TRUCK W/ ALTEC BOOM



2011 DODGE 5500 4WD BUCKET TRUCK
W/ TEREX 37 FT. BOOM



2006 INTERNATIONAL 4400 COMPRESSOR
TRUCK W/ DT466



FREIGHTLINER T/A TRUCK TRACTOR
W/ CUMMINS N14



2008 KENWORTH T300 VAN BODY TRUCK
W/ REEFER UNIT



2012 FORD F250 4WD PICKUP

BUCKET TRUCKS

2006 International 4400 S/A Bucket Truck, DT466 Automatic, Spring Suspension, Terex Hi-Ranger 5TC-52 Boom, 52' Platform Height, Front & Rear Hydraulic Stabilizers, 13' Utility Box

2011 Dodge Ram 5500 4x4 Heavy Duty Bucket Truck, Cummins 6.7L Turbo Diesel, Automatic, Terex Hi Ranger HR37M Boom, 37' Platform Height, 11' Utility Box, Dually

COMPRESSOR TRUCKS

2006 International 4400 Compressor Truck, DT466, Automatic, Spring Suspension, 12' Utility Box, Honda 5000 Watt Generator, Hose Reels, Rear Air Hookups, Pintle Hitch

2005 International 4400 S/A Compressor Truck, DT466, , Spring Suspension, 12' Utility Box, Honda 5000 Watt Generator, Hose Reels, Rear Air Hookups, Pintle Hitch

ASPHALT DISTRIBUTOR TRUCK

1990 Ford F800 S/A Asphalt Distributor Truck, 7.8L, 5+2 Speed, Rosco Bed

STAKEBODY TRUCKS

2005 Ford F550 4WD Super Duty Stakebody Truck, 6.0L, Automatic, Dually, 9' Bed, Braden Winch

TRUCK TRACTORS

1999 Volvo T/A Truck Tractor, 12.1L Diesel Engine , 10-Speed, 4-Bag Air Ride, 189" Wheel Base, 52,000 lb. GVWR, 40,000 lb. Rears, 12,000 lb. Front Axle, All Aluminum Rims

1995 Freightliner T/A Truck Tractor, Cummins N14, 13-Speed, 4-Bag Air Ride, Wet Kit, 199" Wheel Base

UTILITY TRUCKS

2008 Ford F550 4x4 Super Duty Service Truck, 6.8L , Automatic, 9' Steel Bed, Miller Big 50 Diesel Welder Generator, Toolboxes, Dually

2009 Ford F350 4x4 Super Duty Super Cab Utility Truck, 5.4L, Automatic, Ladder Rack

(2) 2008 Ford F350 4WD Super Duty Utility Trucks, 6.8L, Automatic

2008 Ford F150 4WD Super Cab Utility Truck, 5.4L, Automatic

(3) 2005 Ford F350 4WD Super Duty Utility Trucks, 6.8, Automatic

VAN BODY TRUCKS

2008 Kenworth T300 S/A Van Body Truck, Paccar Engine with Hybrid, Automatic, Thermo King Reefer Unit, Air Ride Suspension, 22' Box with Liftgate, Rollup Door, 33,000 lb. GVWR, All Aluminum Rims

2004 Isuzu NPR S/A Box Truck, Diesel, Automatic, 12' Box with Liftgate, 14,500 lb. GVWR

PICKUPS

(3) 2012 Ford F250 4WD Pickups, 6.2L, Automatic

(2) 2011 Ford F250 4WD Super Duty Pickups, 6.2L, Automatic

2010 Ford Ranger 4WD Super Cab Pickup, 4.0L, Automatic

2001 Ford F250XL Super Duty 4WD Super Cab Pickup, 6.8L, Automatic

Many More To Be Added!

SIDE DUMP TRAILERS

(2) 2015 Jet T/A Side Dump Trailers, 4-Bag Air Ride, Electric Tarp, 70,000 lb. GVWR

2014 Jet T/A Side Dump Trailer, 4-Bag Air Ride, Electric Tarp, 70,000 lb. GVWR



2001 INTERNATIONAL 4800 DIGGER
DERRICK TRUCK W/ TEREX BOOM



FORD F800 ASPHALT DISTRIBUTOR TRUCK
W/ ROSCO BED



1999 VOLVO T/A TRUCK TRACTOR



2004 ISUZU NPR S/A BOX TRUCK, DIESEL



2014 JET T/A SIDE DUMP TRAILER W/AIR RIDE



RELIANCE 24 FT. END DUMP TRAILER



T/A OIL RECLAIMING TRAILER



20' STEEL STORAGE CONTAINER



2004 JOHN DEERE 250 SKID STEER LOADER
W/ 581 HOURS



1998 TAMROCK PANTERA 900 CRAWLER
ROCK DRILL

END DUMP TRAILER

Reliance T/A End Dump Trailer, 24' Length, Spring Suspension, Frameless, High Liftgate, Electric Tarp

LOWBOY TRAILER

1989 EMI Tri-Axle Lowboy Trailer, Detachable Gooseneck, 22.5' Well, 102" Wide, Air Ride Suspension

EQUIPMENT TRAILERS

2010 Maxey T/A Tilt Deck Equipment Trailer, 8' x 18' Steel Deck, Pintle Hitch

Great Selection of T/A & S/A Equipment Trailers

ASSORTED TRAILERS

2000 Butler HCT-100-L S/A Hydraulic Reel Trailer, Pintle Hitch

1986 Hogg & Davis H135CRU S/A Tensioning Trailer, Wisconsin Gas Engine, Pintle Hitch

1989 Taylor S/A Pole Trailer, Extendable, Air Brakes, Pintle Hitch

1973 Teague T/A Oil Reclaiming Trailer, Eaton Tank, Pintle Hitch

STEEL STORAGE CONTAINERS

40' & 20' Steel Storage Containers

ATV

2005 Honda TRX500FM 4WD ATV, Front Winch, Hour Meter Reads: 226

NEW SKID STEER ATTACHMENTS

(4) New 14' Snow Pusher Attachments To Fit Loader

(12) New 10' Snow Pusher Attachments To Fit Skid Steer Loader

(12) New 8' Snow Pusher Attachments To Fit Skid Steer Loader

New 6' Snow Pusher Attachments To Fit Skid Steer Loader

(14) New Hydraulic Posthole Digging Attachments To Fit Skid Steer Loader with 12" and 18" Auger Bits

(3) New 76" Hydraulic Skeleton Grapple Buckets to Fit Skid Steer Loader, Single Cylinder

(2) New JBX 4000 Fork Attachments To Fit Skid Steer Loader, 48" Forks

(5) New Kivel 42" Fork Attachments To Fit Skid Steer Loader

(8) New Hydraulic 72" Brush Cutting Attachments To Fit Skid Steer Loaders

(2) New Kivel 72" Skid Steer Buckets

(2) New Kivel 78" Skid Steer Buckets

(2) New Kivel 84" Skid Steer Buckets

(2) New Kivel 66" Skid Steer Buckets

(2) New Kivel 60" Skid Steer Buckets

New Hydraulic Breaker Attachments To Fit Skid Steer

New 72" Hydraulic Vibratory Roller Attachments To Fit Skid Steer Loader

New JCT Hydraulic 72" Box Broom/ Sweeper Attachments To Fit Skid Steer Loader

New Hydraulic Trencher Attachments To Fit Skid Steer Loader

New Combo Skid Steer Attachment, 48" Pallet Forks, Bale Spear, Trailer Mover

(12) New Skid Steer Attachment Frames

(4) New Kivel Trailer Mover Attachments To Fit Skid Steer Loader



HOGG DAVIS S/A TENSIONING TRAILER



TAYLOR S/A POLE TRAILER



NEW 40 FT. STEEL STORAGE CONTAINER



ALLIS CHALMERS M100B MOTOR GRADER



2007 S.D.P. EZ HAULER 3800 MINI CRANE
W/ 424 HOURS



**CATERPILLAR 10,000 LB. GAS FORKLIFT
W/ ENCLOSED CAB**



2003 FORD F350XL LANDSCAPE DUMP TRUCK



FORD F250XLT 4WD SUPER CAB PICKUP



NEW SNOW PUSHERS



**NEW HYDRAULIC BRUSH CUTTING
ATTACHMENT FOR SKID STEER**

NEW TIRES

(5) Sets of (4) New Loadmaxx 12-16.5 Skid Steer Tires w/ Wheels

(4) Sets of (4) New Camso 10-16.5 Skid Steer Tires with Wheels

(5) Sets of (4) New Camso 12-16.5 Skid Steer Tires

(5) Sets of (4) New Camso 10-16.5 Skid Steer Tires

Set of (4) New Rainier ST225/75-15 Radial Trailer Tires with Wheels

Set of (4) New Tow Star ST235/80-15 Radial Trailer Tires with Wheels

Set of (4) New Trailer King ST205/75-15 Radial Trailer Tires with Wheels

MISCELLANEOUS

(4) New 30" x 90" Metal Work Tables, 10-Gauge Top

(4) New 30" x 90" Metal Work Tables, 5/8" Top

(4) New 30" x 57" Steel Welding Tables with Lower Shelf

New Mustang LF88D Gas Plate Compactor

New Mustang ML80D Gas Jumping Jack

New 60-Gallon Poly Diesel Fuel Tank with 12V Pump

(9) New Spinner & Gong Shooting Targets, AR500 Steel, 3/8" Thick

Large Amount Of Steet Scaffolding



NEW SKID STEER TIRES



2005 HONDA TRX500FM 4WD ATV



**NEW HYDRAULIC GRAPPLE BUCKETS
FOR SKID STEER**



FORD L8000 S/A DUMP TRUCK, DIESEL



**2000 INTERNATIONAL 4700 STAKEBODY
DUMP TRUCK, COUNTY UNIT**



**2008 FORD F550 4WD SUPER DUTY
SERVICE TRUCK**



**NEW HYDRAULIC BREAKER ATTACHMENT
FOR SKID STEER**



NEW FORK ATTACHMENTS FOR SKID STEER

AUCTION INFORMATION

DATE: Wednesday, January 19th, 2022

ADDRESS: 7500 York Street, Denver, CO 80229

DIRECTIONS: Southbound I-25: Take the 84th Ave. Exit, #219, go east to Washington Ave., then south to 78th Ave., then east to York . then south on York approx. 3 blocks. Northbound I-25: Take the I-76 Exit #216A, then veer left onto the 70th Ave. Exit #216B, then east on 70th Ave. approx. 1.3 miles to York, then 2 blocks north. Westbound on I-270: Take the York St. Exit #1, then proceed north approx. 1 mile. Eastbound on I-76: Take the 74th Ave Exit #8, then go back west approx. 1 mile to York St., then 2 blocks north. Watch for auction signs.

INSPECTION: January 17th & 18th from 8:15am to 4:45pm and the morning of the auction at 7:00am. Auction location is 7500 York St., Denver, CO 80229.

BUYERS' PREMIUM: All purchases will be assessed a 13% Buyer's Premium. This will be added to the purchase price and is subject to all applicable sales taxes. (3% discount is available - see payment terms).

PAYMENT TERMS: Full payment required by 4:45pm on Monday, January 24th, in cash, certified funds, bank wire transfer, checks approved by Telecheck or accompanied by bank letter, Visa, MasterCard or Discover. If paying in full in cash, cashier check, bank wire transfer or check with a letter of guarantee, a 3% reduction off of the stated buyers' premium is given.

Due to the Coronavirus and the goal to reduce interactions and maintain social distancing. Our Payment terms will be modified going forward as we attempt to have all electronic payments.

- Payments under \$1000 will be automatically charged to the credit card on file, immediately following the auction.
- Payments over \$1000 can be made by bank wire transfer and cash deposits made directly into our account at a Chase Bank.
- Cashier Checks will be accepted in our office, at this time we are not accepting cash in the office
- Payments in bank wire transfer and those directly deposited into our account will receive a 3% reduction off the buyer's premium.

REMOVAL: All purchases must be removed at buyers' expense and responsibility by 4:45 p.m. on Friday, January 28th, 2022. Hours are 8:15am-4:45pm on weekdays. No removal on the weekend. Removal must be scheduled by appointment only through **Our Scheduling System.** You will receive a link to this in your invoice after the auction.

THREE UPCOMING INTERNET AUCTIONS:

ECONOMY PAVING

**Tuesday • Jan 18th
at 9:00am**

5900 Piece St Arvada, CO 80003

**Inspection: Jan 17th
From 9:00am - 4:00pm**

Auction Including: Asphalt Paver, Compaction Equipment, Skid Steer Loaders, Infra-Red Machines, Dump Trucks, Forms Truck, Trailers and More!



VEHICLES, CONTRACTING & RENTAL YARD EQUIPMENT

**Thursday • Jan 20th
at 8:30am**

7500 York St Denver, CO 80229

**Inspection: Jan 17th - 19th
from 8:15am - 4:45pm**

The auction typically includes: vehicles, trailers, lawn and garden equipment, attachments, rental yard equipment, shop equipment, concrete equipment, generators, toolboxes, gang boxes, ladders and more!



GOVERNMENT/FLEET VEHICLES & EQUIPMENT

**Wednesday • Feb 9th
at 9:00am**

7500 York Street Denver, CO 80229

**Inspection: Feb 7th & 8th
from 8:15am - 4:45pm**

The auction typically includes: Pickups, SUV's, Sedans, Police Vehicles, Trailers, Attachments, and More!



Contact Steve @ 303-289-1600 x 104 if you have quality construction equipment you want to get into our March auction!