



7500 York Street
Denver, CO 80229

PRESORTED
FIRST CLASS MAIL
U.S. POSTAGE
PAID
DENVER CO
PERMIT # 4033



2015 INTERNATIONAL 7400 4WD PUMP TRUCK,
CITY UNIT

WHAT

An auction of heavy construction equipment from companies, local contractors & Government Entities

WHEN

Wednesday, March 16th @ 9:00am

Inspection: March 14th & 15th
from 8:15am - 4:45pm

WHERE

7500 York Street, Denver, CO 80229

INTERNET AUCTION



HEAVY CONSTRUCTION & CONTRACTING EQUIPMENT

WEDNESDAY • March 16th • 9:00 A.M.

Inspection: March 14th & 15th from 8:15 a.m. to 4:45 p.m.



2007 STERLING L9500 READY MIX TRUCK



2012 INTERNATIONAL 7600 ASPHALT PATCH TRUCK

SELLING FOR

Weld County
Adams County
Park County
City of Boulder
Xcel Energy

Plus other contractors

AUCTION INCLUDING:

Motor Grader, Wheel Loaders,
Loader/ Backhoes, Hydraulic
Excavators, Skid Steer Loaders,
Crawler, Compaction Equipment,
Truck Tractors, Telescopic
Forklifts, Trenchers, Ready Mix
Trucks, Dump Trucks, Utility
Trucks, Flatbed Trucks, Bucket
Trucks, Fire Trucks, Equipment
Trailers, Rock Drill, New
Attachments, Pickups & More!



7500 York Street • Denver, Colorado 80229
WEDNESDAY • March 16th • 9:00 A.M.
Inspection: March 14th & 15th from 8:15 a.m. to 4:45 p.m.

Heavy Construction & Contracting Equipment



2012 JOHN DEERE 544K WHEEL LOADER
W/ QUICK COUPLER

Internet Only Auction • Bidding Available at:
www.RollerAuction.com/construction

Motor Grader, Wheel Loaders, Loader/ Backhoes, Hydraulic Excavators, Skid Steer Loaders, Crawler, Compaction Equipment, Truck Tractors, Telescopic Forklifts, Trenchers, Ready Mix Trucks, Dump Trucks, Utility Trucks, Flatbed Trucks, Bucket Trucks, Fire Trucks, Equipment Trailers, Rock Drill, New Attachments, Pickups & More!



2008 JOHN DEERE 135C HYDRAULIC EXCAVATOR



2009 BOMAG BW27RH 8-WHEEL
PNEUMATIC ROLLER, COUNTY UNIT



1998 TAMROCK PANTERA 900 CRAWLER ROCK DRILL

Roller & Associates, Inc.

7500 York Street • Denver, Colorado 80229 • (303) 289-1600 • www.rollerauction.com

Roller & Associates, Inc.

7500 York Street • Denver, Colorado 80229 • (303) 289-1600 • www.rollerauction.com



2001 CATERPILLAR 980G WHEEL LOADER



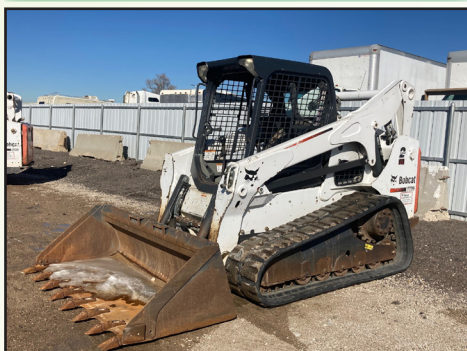
2006 VOLVO L90E WHEEL LOADER
W/ QUICK COUPLER



2001 LEEBOY 420 9-WHEEL
PNEUMATIC ROLLER



2013 BOBCAT S750 SKID STEER LOADER



2012 BOBCAT T770 SKID STEER LOADER

WHEEL LOADERS

2012 John Deere 544K Wheel Loader, Cab W/Heat & A/C, 3rd Valve, TAG 3 Yard Bucket, Quick Coupler, Hour Meter Reads: 9,556, S/N: 1DW544KZTCE643702

2006 Volvo L90E Wheel Loader, Quick Coupler, Hour Meter Reads: 6131, S/N: L90EV67342

2001 Caterpillar 980G Wheel Loader, Hour Meter Reads: 15,356, 29.5-R25 Tires, S/N: CAT0980GE9CM02012

1997 John Deere 624G Wheel Loader, 20.5-R25 Tires, County Unit, Hour Meter Reads: 10,157

HYDRAULIC EXCAVATORS

2008 John Deere 135C Hydraulic Excavator, Heat & A/C, Backfill Blade, Coupler, 18" & 36" Buckets, Hour Meter Reads: 7659, S/N: FF135X301145

LOADER/ BACKHOES

1997 John Deere 410E 4WD Loader/ Backhoe, Extendahoe, EROPS, Hour Meter Reads: 5253, County Unit

Ford 555D Loader/Backhoe, Extendahoe, ROPS

ROCK DRILL

1998 Tamrock Pantera 900 Crawler Rock Drill, Caterpillar Diesel, Equipped with H2100 Drifter, Hours: 4012

COMPACTION EQUIPMENT

2009 Bomag BW27RH 8-Wheel Pneumatic Roller, Enclosed Cab w/ Heat & A/C, Cleaning Pads, Deutz 6-Cylinder Diesel, County Unit, S/N: 101538111106

2001 Leeboy 420 9-Wheel Pneumatic Roller, Hatz Diesel, Spray Bars, Cleaning Pads, Hour Meter Reads: 1013

2014 Wacker RD12A Ride On Smooth Drum Roller, Honda Engine, 36" Double Drums, Hours: 1108, S/N: 20205061

2013 Wacker RD12A Ride On Smooth Drum Roller, Honda, 36" Double Drums, Hour: 1823, S/N: 20178393

SKID STEERS

(2) 2013 Bobcat S750 Skid Steer Loaders

2012 Bobcat T770 Crawler Skid Steer Loader

2012 John Deere 333D Track Skid Loader, Enclosed Cab, 18" Rubber Tracks, Auxiliary Hydraulics, 84" Bucket, S/N: 1T0333DMTCD228107

2005 Case 440 Skid Steer Loader, Enclosed Cab, Auxiliary Hydraulics, 72" Bucket, Hour: 6212, S/N: N5M414897

Bobcat 753 Skid Steer Loader, Auxiliary Hydraulics, 66" Bucket, Hour Meter Reads: 2037, S/N: 515814516

Case 1840 Skid Steer Loader, Auxiliary Hydraulics, 60" Bucket, 10-16-5 Tires, Hour Meter Reads: 4675

TELESCOPIC FORKLIFTS

Sky Trak 8042 Telescopic Forklift, 8,000 lb Capacity

Job Handler LR523 Telescopic Forklift, 5000 lb. Capacity, 23' Reach, 4-Cylinder Diesel, 48" Forks, S/N: 5A168

TRENCHERS

2007 Ditch Witch RT40 4WD Ride-On Trencher, Deutz 3-Cylinder, 64" Backfill Blade, Offset Boom, Side Auger, Crumber, Front Counterweights, Hour Meter Reads: 2,019, S/N: CMWRT40XK70002078

2006 Ditch Witch RT40 4WD Ride-On Trencher, Deutz 3-Cylinder, 64" Backfill Blade, Side Augers, Front Counterweights, Hour Meter Reads: 1,537, S/N: CMWRT40XA60001307

Vermeer V5750 Ride-On Trencher, Deutz Diesel, 64" Backfill Blade, Front Counterweights, Crumber, Hour Meter Reads: 2965, S/N: 1VRM082Z5V1000380



1997 JOHN DEERE 624G WHEEL LOADER,
COUNTY UNIT



FORD 555D LOADER/ BACKHOE, EXTENDAHOE



WACKER RD12A SMOOTH DRUM ROLLERS



CASE 1840 SKID STEER LOADER



2007 DITCH WITCH RT40 RIDE-ON TRENCHER



2005 RAY-TECH MINI COMBO
INFRA-RED TRAILER



2009 STERLING VACUUM TRUCK
W/ SUPER PRODUCTS BED



2008 INTERNATIONAL 4300 BUCKET TRUCK
W/ TEREX 41 FT. BOOM



2000 KENWORTH W900B READY MIX TRUCK



2005 STERLING ACTERRA FLATBED TRUCK
W/ MERCEDES DIESEL

MOTOR GRADER

1985 Caterpillar 120G, S/N: 87V06130

CRAWLER/TRACTOR

1986 Komatsu D37E Crawler/Tractor, S/N: D37EA1969

ASPHALT PAVER

Terex/Cedarapids CR362L Asphalt Paver, 8' to 16" Screed, Cummins Diesel

ASPHALT DISTRIBUTOR TRUCK

2005 International 7300 T/A Asphalt Distributor Truck, DT466E, Rosco Maximizer 3 Distributor Bed, 17K Miles, County Unit

ASPHALT PATCH TRUCK

2012 International 7600 S/A Asphalt Patch Truck, Maxxforce 9.3L, Automatic, Air Ride Suspension, Bergkamp FP5 Frameless Pothole Patcher

VACUUM TRUCK

2009 Sterling T/A Vacuum Truck, Caterpillar C13 Acert, 10-Speed, Hendrickson Spring Suspension, Super Products Bed, 64,000 lb. GVWR, 44,000 lb. Rears, 20,000 lb. Front Axle

DUMP TRUCKS

2001 Mack CH613 T/A Dump Truck, 12.0L L6, 10-Speed, 4-Bag Air Ride, 14' Dump Box With Electric Tarp

2001 International 2674 T/A Dump Truck, Caterpillar C10, 10-Speed, Hendrickson Spring Suspension, 15' Dump Box w/ Electric Tarp, 56,000 lb. GVWR

BUCKET TRUCK

2008 International 4300 S/A Bucket Truck, Maxxforce Diesel, Automatic, Extended Cab, Terex Hi-Ranger TL41P Boom, 41' Platform Height, 11' Utility Box, 33,000 lb. GVWR

DIGGER DERRICK TRUCK

2001 International 4900 S/A Digger Derrick Truck, DT466E, 6-Speed, Spring Suspension, Terex Boom, 12' Utility Box, With Bucket, 33,000 lb. GVWR, Pintle Hitch

READY MIX TRUCKS

2007 Sterling L9500 T/A Ready Mix Truck, Caterpillar C13 Acert, 9-Speed, Lift Axle, Rubber Pad Suspension, Kimble K-200 Mixer, Purchased New in 2020 Unused, 66,000 lb. GVWR, 46,000 lb. Rears, 20,000 lb. Front Axle

2005 Sterling L9500 T/A Ready Mix Truck, Caterpillar C11 Acert, 9-Speed, Rubber Pad Suspension, McNeilus Mixer, 66,000 lb. GVWR, 46,000 lb. Rears, 20,000 lb. Front Axle

2000 Kenworth W900B T/A Ready Mix Truck, Cummins ISM, Eaton Transmission, Rubber Pad Suspension, TMMB 11-Cubic Yard Mixer, 66,000 lb. GVWR

FIRE TRUCKS

2015 International 7400 S/A 4WD Pump Truck, 7.6L Diesel, Automatic, 30,000 Original Miles, City Unit

2002 American Lafrance Eagle S/A Quint Ladder Truck, Cummins ISM, Automatic, MV-75 75' Ladder With Waterway, 600 LB Capacity, ALFS 150-21 Pump, 1,500 GPM, 500-Gallon Tank, Municipality Unit

TRUCK TRACTORS

1994 Freightliner T/A Truck Tractor, Caterpillar C15, 13-Speed, Air Ride Suspension, Wet Kit

FLATBED TRUCKS

2005 Sterling Acterra T/A Flatbed Truck, Mercedes Diesel, Automatic, Tuf-Trac Suspension, 23' Bed, 56,000 lb. GVWR, 40,000 lb. Rears, 16,000 lb. Front Axle

2008 Ford F350XL Super Duty Crew Cab 4x4 Flatbed Truck,



JOHN DEERE 410E 4WD LOADER BACKHOE
COUNTY UNIT



2001 MACK CH613 T/A DUMP TRUCK



2001 INTERNATIONAL 4900 DIGGER
DERRICK TRUCK W/ TEREX BOOM



2002 AMERICAN LAFRANCE EAGLE QUINT
LADDER TRUCK, MUNICIPALITY UNIT



2008 FORD F350XL 4X4 CREW CAB
FLATBED TRUCK



2006 DODGE RAM 2500 4X4 CREW CAB FLATBED TRUCK



W-W 20 FT. HORSE TRAILER W/ LIVING QUARTERS



ROADMASTER 6 FT. BY 12 FT. ENCLOSED TRAILER



INGERSOLL RAND 175 CFM TOWABLE AIR COMPRESSOR



NEW FORK ATTACHMENTS TO FIT SKID STEER LOADER

FLATBED TRUCKS continued...

Powerstroke , Automatic, 11" Bed, Dually

2006 Dodge Ram 2500 Big Horn Edition Crew Cab 4x4 Flatbed Truck, 5.9L Cummins Turbo, Automatic, 7' Bed

2001 Ford F350XL Crew Cab 4x4 Flatbed Truck, 6.8L, Automatic, 9' Bed

UTILITY TRUCKS AND PICKUPS

Great Selection of Utility Trucks & Pickups

END DUMP TRAILER

1969 Fruehauf T/A End Dump Trailer, 24' Length, Spring Suspension, Tarp

EQUIPMENT TRAILERS

2013 Felling T/A Tilt Bed Equipment Trailer, 8' x 23' Deck, County Unit

2000 Trail King TKT32 T/A Tilt Deck Equipment Trailer, Duals, 8' x 30' Deck, Pintle Hitch

1985 Trail King T/A Tilt Bed Equipment Trailer, Duals, 8' x 21' Deck, Air Brakes, Pintle Hitch

2015 H&H T/A Gooseneck Equipment Trailer, Duals, 8' x 30' Deck, 22,500 lb. GVWR

2021 Homemade T/A Equipment Trailer, 15' x 88", 5' Dovetail, (2) 8000 lb. Axles, Fold-Down Ramps, Ball Hitch

Trail King T/A Equipment Trailer, Duals, 8' x 16' Deck, 5' Dovetail, Fold Down Ramp, Air Brakes, Pintle Hitch

MANY MORE TO BE ADDED!

FLATBED TRAILER

2001 Great Dane T/A Flatbed Trailer, 48' x 102", Aluminum Combo, Spread Axle, Air Ride Suspension

ASSORTED TRAILERS

1995 W-W T/A Horse Trailer, Gooseneck, Living Quarters, 20' Length, 10,400 lb. GVWR

2003 Roadmaster S/A Enclosed Trailer, 6' x 12', Swing Open Back Doors, Side Entry Door, Ball Hitch

2003 BRI-MAR T/A Hydraulic Dump Trailer, 77" x 10', Tarp, Pintle Hitch

MANY MORE TO BE ADDED!

INFRA-RED TRAILER

2005 Ray-Tech T/A Infra-Red Trailer, Mini Combo, 6' x 8' Laydown Heater, Propane Powered, Pintle Hitch

AIR COMPRESSORS

Ingersoll-Rand Towable Air Compressor, 175 CFM, Gas Engine, Pintle Hitch, Hour Meter Reads: 2,098, S/N: 155946U86923

Atlas Copco Towable Air Compressor, 185 CFM, John Deere Diesel, Pintle Hitch

PORTABLE RAMP

2021 Medlin Portable Ramp, 10-Ton Capacity, 8' Wide By 39' Long, Adjustable Height w/ Wheels

NEW SKID STEER ATTACHMENTS & SKID STEER TIRES

Over 100 New Skid Steer Attachments Consisting of:

Mowers, Forks, Buckets, Breakers, Rotor Tillers, Vibratory Rollers, and Much More!

MISCELLANEOUS

Metal Work Tables

Shooting Targets

Fork Extensions

Cimline & Magnum Walk-Behind Concrete Saws

Sheepsfoot Compaction Wheel



FRUEHAUF 24 FT. T/A END DUMP TRAILER



2000 TRAIL KING TKT32 TILT DECK EQUIPMENT TRAILER



2017 CUB CADET CHALLENGER 750 CREW 4WD UTV



2021 MEDLIN 10-TON PORTABLE RAMP, 8 FT. BY 39 FT.



PARTIAL VIEW OF NEW SKID STEER TIRES

AUCTION INFORMATION

DATE: Wednesday, March 16th, 2022

ADDRESS: 7500 York Street, Denver, CO 80229

DIRECTIONS: Southbound I-25: Take the 84th Ave. Exit, #219, go east to Washington Ave., then south to 78th Ave., then east to York. then south on York approx. 3 blocks. Northbound I-25: Take the I-76 Exit #216A, then veer left onto the 70th Ave. Exit #216B, then east on 70th Ave. approx. 1.3 miles to York, then 2 blocks north. Westbound on I-270: Take the York St. Exit #1, then proceed north approx. 1 mile. Eastbound on I-76: Take the 74th Ave Exit #8, then go back west approx. 1 mile to York St., then 2 blocks north. Watch for auction signs.

INSPECTION: March 14th & 15th from 8:15am to 4:45pm and the morning of the auction at 7:00am.

Auction location is 7500 York St., Denver, CO 80229.

BUYERS' PREMIUM: All purchases will be assessed a 13% Buyer's Premium. This will be added to the purchase price and is subject to all applicable sales taxes. (3% discount is available - see payment terms).

PAYMENT TERMS: Full payment required by 4:45pm on Monday, March 21st, in cash, certified funds, bank wire transfer, checks approved by Telecheck or accompanied by bank letter, Visa, MasterCard or Discover. If paying in full in cash, cashier check, bank wire transfer or check with a letter of guarantee, a 3% reduction off of the stated buyers' premium is given.

Due to the Coronavirus and the goal to reduce interactions and maintain social distancing. Our Payment terms will be modified going forward as we attempt to have all electronic payments.

- Payments under \$1000 will be automatically charged to the credit card on file, immediately following the auction.
- Payments over \$1000 can be made by bank wire transfer and cash deposits made directly into our account at a Chase Bank.
- Cashier Checks will be accepted in our office, at this time we are not accepting cash in the office
- Payments in bank wire transfer and those directly deposited into our account will receive a 3% reduction off the buyer's premium.

REMOVAL: All purchases must be removed at buyers' expense and responsibility by 4:45 p.m. on Friday, March 25th, 2022. Hours are 8:15am-4:45pm on weekdays. No removal on the weekend. Removal must be scheduled by appointment only through **Our Scheduling System**. You will receive a link to this in your invoice after the auction.

THREE UPCOMING INTERNET AUCTIONS:

ONE-STOP CONSTRUCTION

Wednesday • March 16th
at 1:00pm

7500 York St Denver, CO 80229

Inspection: March 14th & 15th
from 8:15am - 4:45pm

Auction Including: Air Compressor, Dump Truck, Ban Body Truck, Utility Truck, Pickup Trucks, Lowboy Trailer, and Enclosed Trailer



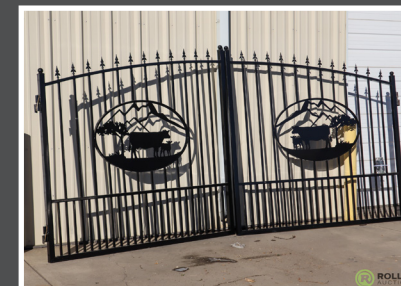
VEHICLES, CONTRACTING & RENTAL YARD EQUIPMENT

Wednesday • March 23rd
at 8:30am

7500 York Street Denver, CO 80229

Inspection: March 21st & 22nd
from 8:15am - 4:45pm

Featuring Lawn and Garden, Automotive, Shop Equipment, Vehicles, Trailers, Pressure Washers, Plus Much More!



GOVERNMENT/FLEET VEHICLES & EQUIPMENT

Wednesday • April 13th
at 9:00am

7500 York Street Denver, CO 80229

Inspection: April 11th & 12th
from 8:15am - 4:45pm

The auction typically includes: SUV's Sedans, Pickups, Utility Trucks, Dump Trucks, Police Vehicles, Trailers, Various Municipality Equipment and Much More!



Contact Steve @ 303-289-1600 x 104 if you have quality construction equipment you want to get into our May auction!