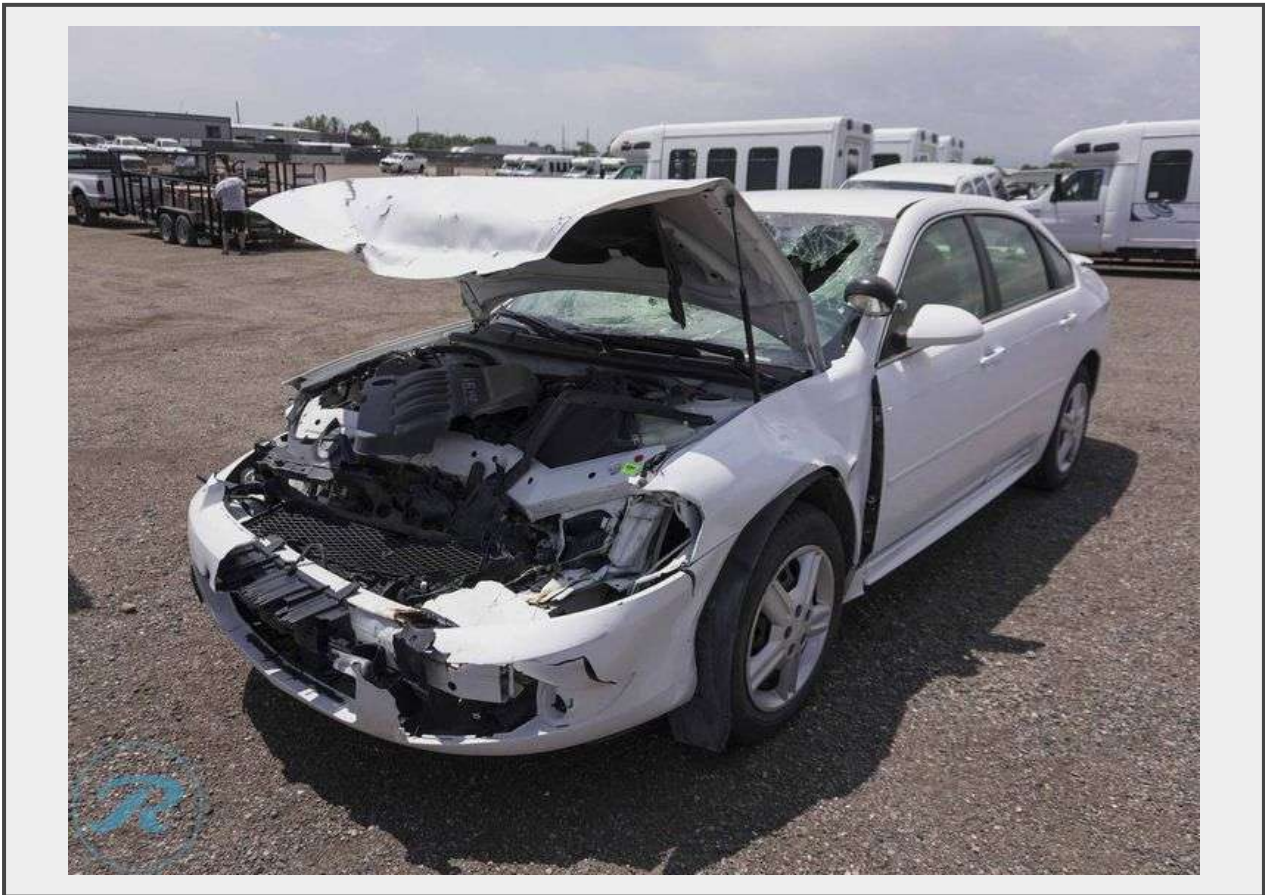


**Sale Name:** August 2024 - Government / Fleet Vehicles and Equipment

**LOT 224 - 2014 Chevrolet Impala FWD**



**Emissions** Tow Away

**Etest Completed By** Tow-Away

**Vin** 2G1WD5E37E1180256

**Vehicle Year** 2014

**Vehicle Make** Chevrolet

**Vehicle Model** Impala

**Drive Type** FWD

**Style** SD

**Mileage** Actual

**Odometer Reads** 173,122

**Vehicle Color** White

**Engine** 3.6L V6 SIDI

**Fuel Type** Gasoline

**Transmission** Automatic

**Noted Issues** TOW AWAY - Accident Damage, Air Bags Deployed

**Unit #** 1410

**Description**

2014 Chevrolet Impala FWD

**Emissions** Tow Away  
**VIN** 2G1WD5E37E1180256  
**Mileage** Actual  
**Odometer Reads** 173,122  
**Color** White  
**Engine** 3.6L V6 SIDI  
**Fuel Type** Gasoline  
**Transmission** Automatic  
**Noted Issues** TOW AWAY - Accident Damage, Air Bags Deployed

Due to Colorado DOR requirements, this unit must be towed off of our lot. We will require a towing service invoice or a picture of the vehicle being towed taken by a Roller representative before buyer will receive keys and title work. Please contact us at 303-289-1600 with any questions. No Temporary Registration will be provided.

**Quantity:** 1



<https://bid.rollerauction.com/>